

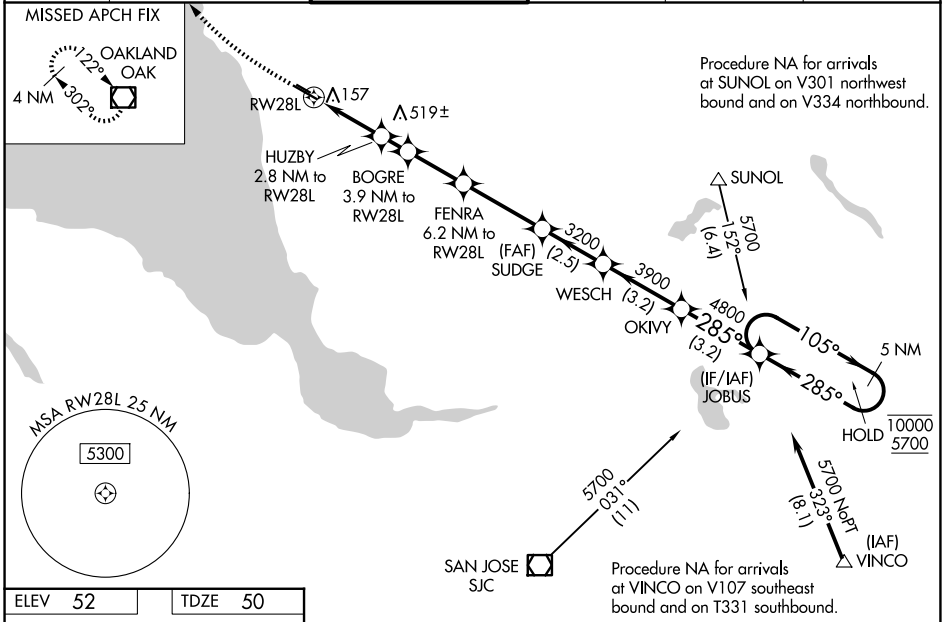
WAAS CH 40330 W28A	APP CRS 285°	Rwy Ldg 5018 TDZE 50 Apr Elev 52
--	------------------------	---

RNAV (GPS) RWY 28L

HAYWARD EXEC (HWD)

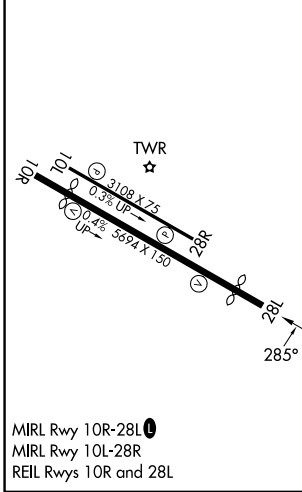
RNP APCH - GPS.		<p>Baro-VNAV NA. Circling Rwy 10L, 28R NA at night. Rwy 28L helicopter visibility reduction below 3/4 SM NA. When local altimeter setting not received, use OAK altimeter setting and increase LPV DA to 370 feet; increase LNAV/VNAV DA to 461 feet; increase all MDAs 40 feet and LNAV visibility Cat C/D 1/4 SM, and Circling visibility Cat D 1/4 SM. Circling NA north of Rwy 10L-28R.</p>		<p>MISSED APPROACH: Climb to 600 then climbing right turn to 2100 direct OAK VOR/DME and hold.</p>	
-----------------	--	--	--	---	--

ATIS 126.7	NORCAL APP CON 124.4 351.8	HAYWARD TOWER* 120.2 (CTAF) 257.8	GND CON 121.4	CLNC DEL 128.05	UNICOM 122.95
----------------------	--------------------------------------	---	-------------------------	---------------------------	-------------------------



ELEV 52	TDZE 50
---------	---------

600	2100	OAK	VGSi and RNAV glidepath not coincident (VGSi Angle 4.00/TCH 35).					
			FENRA	SUDGE	WESCH	OKIVY	JOBUS	5 NM
							Holding Pattern	
							105° → 10000	
							← 285° 5700	
							GP 3.10°	
							TCH 35°	
	0.9	1.9	1.1 NM	2.3 NM	3.3 NM	2.5 NM	3.2 NM	3.2 NM
CATEGORY	A		B		C		D	
LPV DA			348-1		298 (300-1)			
LNAV/VNAV DA			439-1 1/8		389 (400-1 1/8)			
LNAV MDA	460-1		410 (500-1)		460-1 1/8		410 (500-1 1/8)	
CIRCLING	540-1		488 (500-1)		540-1 1/2		920-2 3/4	
					488 (500-1 1/2)		868 (900-2 3/4)	



SW-2, 11 JUN 2026 to 09 JUL 2026

SW-2, 11 JUN 2026 to 09 JUL 2026