

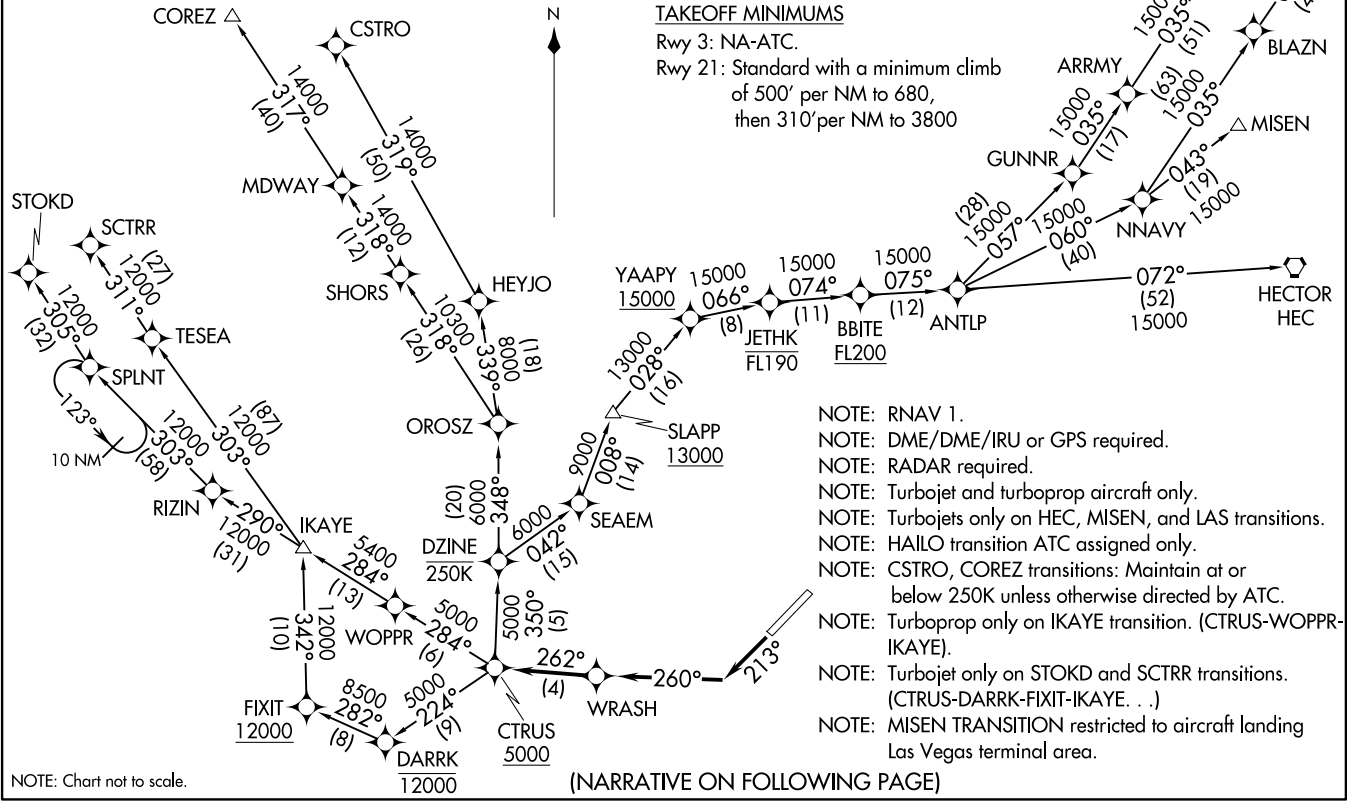
**TOP ALTITUDE:
IKAYE TRANSITION: AS ASSIGNED BY ATC;
ALL OTHER TRANSITIONS: FL230**

ATIS
119.15
SANTA MONICA TOWER*
120.1 257.8
SOCAL DEP CON
125.2 323.275

TAKEOFF MINIMUMS
Rwy 3: NA-ATC.
Rwy 21: Standard with a minimum climb
of 500' per NM to 680,
then 310' per NM to 3800

- NOTE: RNAV 1.
- NOTE: DME/DME/IRU or GPS required.
- NOTE: RADAR required.
- NOTE: Turbojet and turboprop aircraft only.
- NOTE: Turbojets only on HEC, MISEN, and LAS transitions.
- NOTE: HAILO transition ATC assigned only.
- NOTE: CSTRO, COREZ transitions: Maintain at or below 250K unless otherwise directed by ATC.
- NOTE: Turboprop only on IKAYE transition. (CTRUS-WOPPR-IKAYE).
- NOTE: Turbojet only on STOKD and SCTRR transitions. (CTRUS-DARRK-FIXIT-IKAYE. . .)
- NOTE: MISEN TRANSITION restricted to aircraft landing Las Vegas terminal area.

(NARRATIVE ON FOLLOWING PAGE)



CTRUS FOUR DEPARTURE (RNAV)
(CTRUS4, CTRUS) 10 SEP 20
SANTA MONICA, CALIFORNIA
SANTA MONICA MUNI (SMT0)

(CTRUS4, CTRUS) 20254
CTRUS FOUR DEPARTURE (RNAV)
AL-5023 (FAA)
SANTA MONICA MUNI (SMT0)
SANTA MONICA, CALIFORNIA



DEPARTURE ROUTE DESCRIPTION

TAKEOFF RUNWAY 21: Climb on heading 213° to intercept course 260° to WRASH, then on track 262° to cross CTRUS at or above 5000, thence

. . . . on assigned transition, IKAYE transition maintain altitude as assigned by ATC, all other transitions maintain FL230. Expect filed altitude 10 minutes after departure.

COREZ TRANSITION (CTRUS4.COREZ)

CSTRO TRANSITION (CTRUS4.CSTRO)

HAILO TRANSITION (CTRUS4.HAILO)

HECTOR TRANSITION (CTRUS4.HEC)

IKAYE TRANSITION (CTRUS4.IKAYE)

LAS VEGAS TRANSITION (CTRUS4.LAS)

MISEN TRANSITION (CTRUS4.MISEN)

SCTRR TRANSITION (CTRUS4.SCTRR)

STOKD TRANSITION (CTRUS4.STOKD)

SW-3, 11 JUN 2026 to 09 JUL 2026

SW-3, 11 JUN 2026 to 09 JUL 2026