

VOR FFT 109.4	APP CRS 251°	Rwy Ldg TDZE Apt Elev	5506 790 813
-------------------------	------------------------	-----------------------------	-----------------------------------------

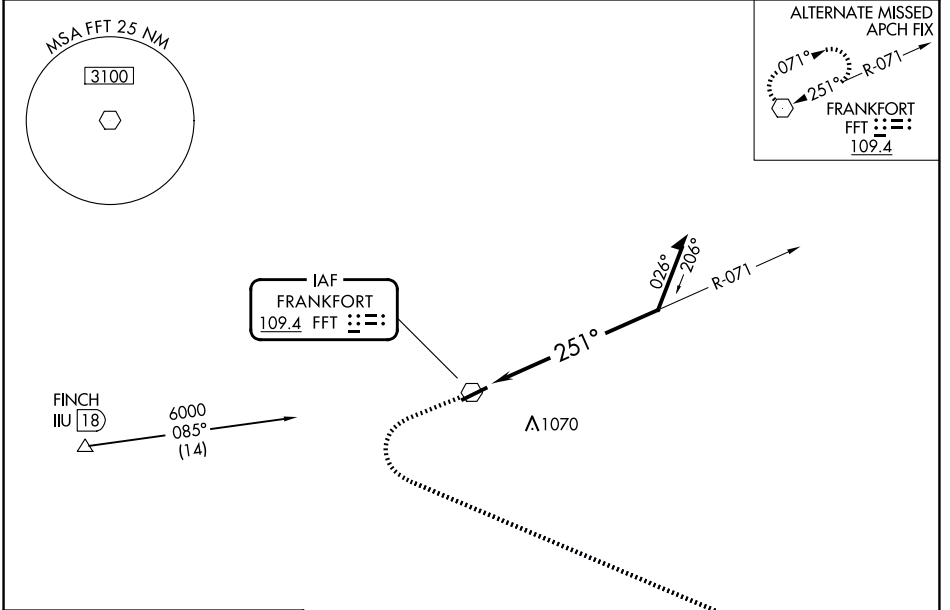
VOR RWY 25

CAPITAL CITY (F'F'T)

⚠ Rwy 25 helicopter visibility reduction below 3/4 SM NA. When local altimeter setting not received, use LEX altimeter setting and increase all MDAs 80 feet and S-25 visibility Cat C/D 1/2 SM, increase Circling Cat C 1/2 SM, and Cat D 1/4 SM.

MISSED APPROACH:
Climb to 3100 then left turn direct HYK VOR/DME and hold.

ASOS 119.275	LEXINGTON APP CON 120.75 298.9	CLNC DEL 118.65	UNICOM 122.8 (CTAF) 0
------------------------	------------------------------------------	---------------------------	---------------------------------



ELEV 813	TDZE 790	MISSED APCH FIX	
3100	HYK	FFT VOR	Remain within 10 NM
↑	↶	071°	2700
		251°	

CATEGORY	A	B	C	D
S-25	1440-1	650 (700-1)	1440-1 $\frac{1}{8}$	650 (700-1 $\frac{1}{8}$)
CIRCLING	1440-1	627 (700-1)	1440-1 $\frac{1}{8}$ 627 (700-1 $\frac{1}{8}$)	1440-2 627 (700-2)

SE-1, 11 JUN 2026 to 09 JUL 2026

SE-1, 11 JUN 2026 to 09 JUL 2026