

|  |                        |   |
|--|------------------------|---|
| WAAS<br>CH <b>56313</b><br><b>W12A</b> | APP CRS<br><b>124°</b> | Rwy Ldg <b>4843</b><br>TDZE <b>8</b><br>Apt Elev <b>9</b> |
|--|------------------------|---|

# RNAV (GPS) RWY 12

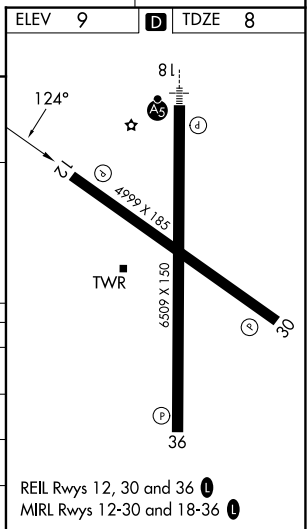
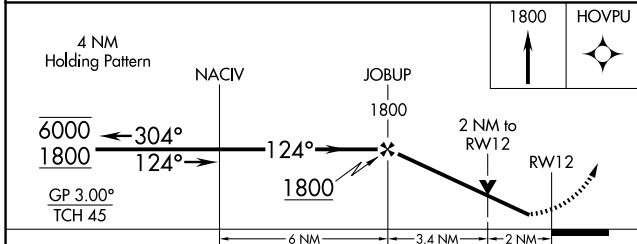
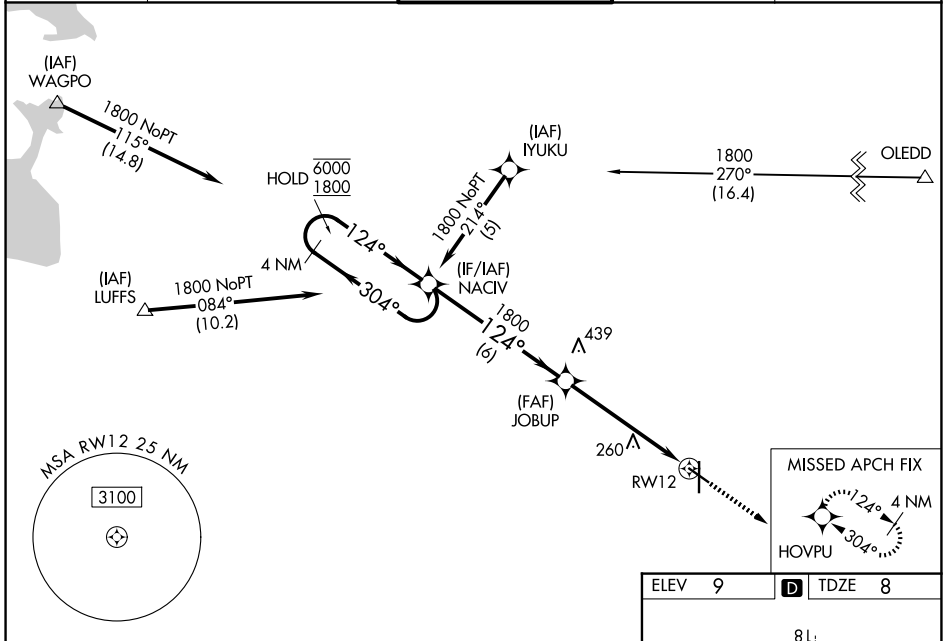
HOUMA-TERREBONNE (HUM)

RNP APCH - GPS.

▼ For uncompensated Baro-VNAV systems, LNAV/VNAV NA below -15°C or above 54°C.  
 ▲ Rwy 12 helicopter visibility reduction below 3/4 SM NA. Baro-VNAV and VDP NA when using MSY altimeter setting. When local altimeter setting not received, use MSY altimeter setting and increase LPV DA to 370 feet and all visibilities 1/4 SM. Increase LNAV/VNAV DA to 567 feet and all visibilities 1/4 SM. Increase all MDAs 80 feet and LNAV visibility Cat B/C/D 1/4 SM, and Circling visibility Cat B/C/D 1/4 SM.

MISSED APPROACH:  
Climb to 1800 direct HOVPU and hold.

|                       |  |  |                           |                         |
|-----------------------|--|--|---------------------------|-------------------------|
| ATIS<br><b>120.25</b> | NEW ORLEANS APP CON<br><b>118.9 350.35</b> | HOUMA TOWER *<br><b>125.3 (CTAF) 346.3</b> | GND CON<br><b>123.875</b> | UNICOM<br><b>122.95</b> |
|-----------------------|--|--|---------------------------|-------------------------|



| CATEGORY     | A     | B           | C                            | D                            |
|--------------|-------|-------------|------------------------------|------------------------------|
| LPV DA       |       | 293-7/8     | 285 (300-7/8)                |                              |
| LNAV/VNAV DA |       | 490-1 3/8   | 482 (500-1 3/8)              |                              |
| LNAV MDA     | 680-1 | 672 (700-1) | 680-1 7/8                    | 672 (700-1 7/8)              |
| CIRCLING     | 680-1 | 671 (700-1) | 760-2 1/4<br>751 (800-2 1/4) | 760-2 1/2<br>751 (800-2 1/2) |

SC-4, 11 JUN 2026 to 09 JUL 2026

SC-4, 11 JUN 2026 to 09 JUL 2026