

WAAS CH <b>56413</b> <b>W36A</b>	APP CRS <b>359°</b>	Rwy Ldg <b>6508</b> TDZE <b>8</b> Apt Elev <b>9</b>
--	------------------------	---

# RNAV (GPS) RWY 36

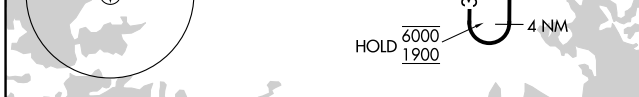
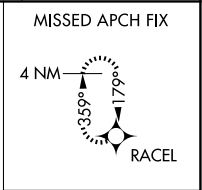
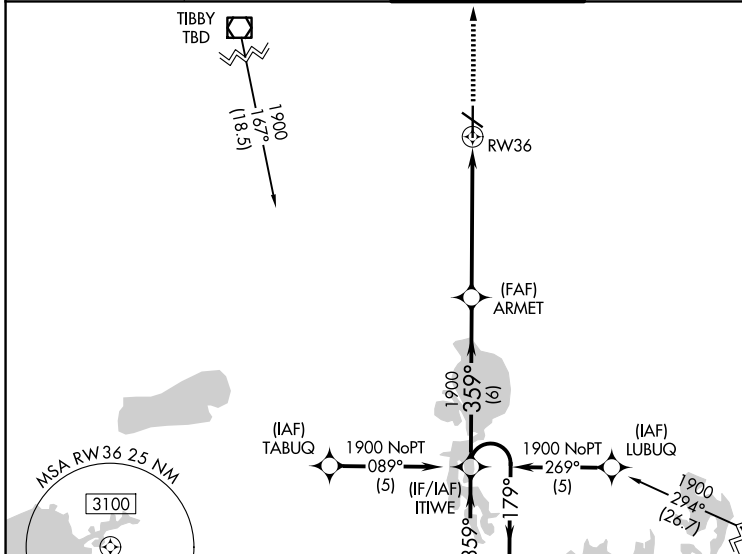
HOUMA-TERREBONNE (HUM)

RNP APCH - GPS.

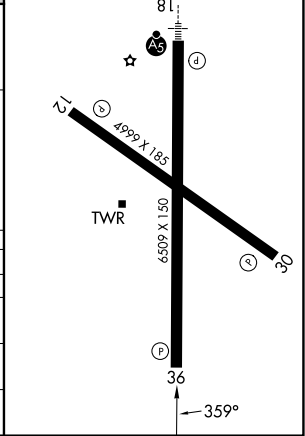
**⚠** For uncompensated Baro-VNAV systems, LNAV/VNAV NA below -15°C or above 54°C. Baro-VNAV and VDP NA when using MSY altimeter setting. Rwy 36 helicopter visibility reduction below 3/4 SM NA. When local altimeter setting not received, use MSY altimeter setting and increase LPV DA to 408 feet and all visibilities 1/2 SM. Increase LNAV/VNAV DA to 518 feet and all visibilities 1/2 SM. Increase all MDAs 80 feet and LNAV visibility Cat C/D 1/2 SM, and Circling visibility Cat C/D 1/4 SM.

**MISSED APPROACH:**  
Climb to 2300 direct RACEL and hold.

ATIS <b>120.25</b>	NEW ORLEANS APP CON <b>118.9 350.35</b>	HOUMA TOWER ★ <b>125.3 (CTAF) 0 346.3</b>	GND CON <b>123.875</b>	UNICOM <b>122.95</b>
-----------------------	--	--	---------------------------	-------------------------



ELEV 9	TDZE 8
REIL Rwy 12, 30 and 36	MIRL Rwy 12-30 and 18-36



CATEGORY	A	B	C	D
LPV DA		331-1	323 (400-1)	
LNAV/VNAV DA		441-1 1/4	433 (500-1 1/4)	
LNAV MDA	460-1	452 (500-1)	460-1 3/8	452 (500-1 3/8)
CIRCLING	480-1	471 (500-1)	760-2 1/4 751 (800-2 1/4)	760-2 1/2 751 (800-2 1/2)

SC-4, 11 JUN 2026 to 09 JUL 2026

SC-4, 11 JUN 2026 to 09 JUL 2026