

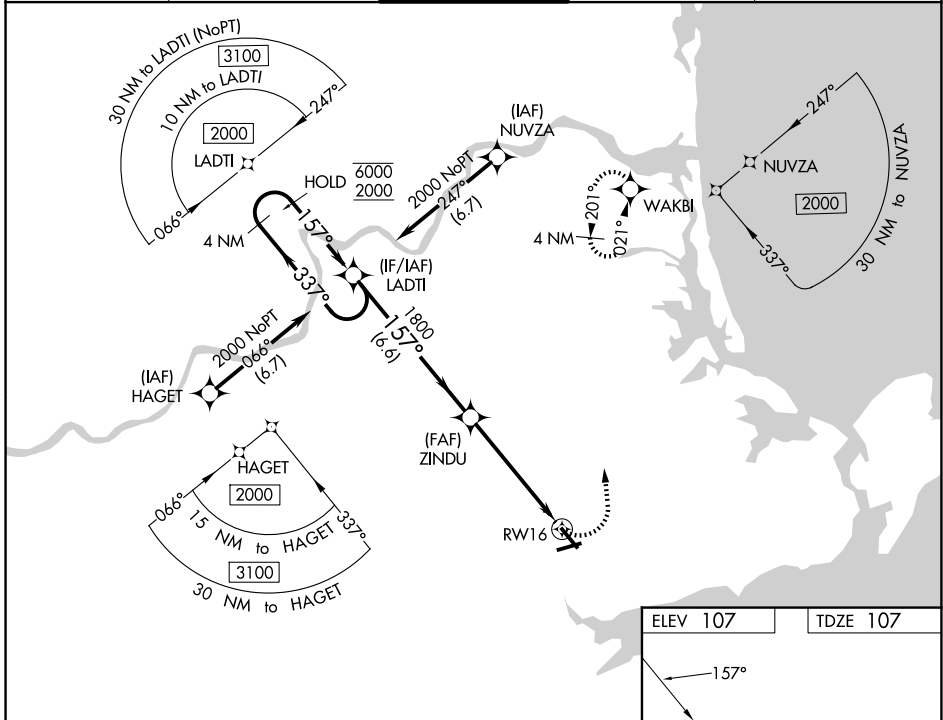
APP CRS	Rwy Ldg	<b>4761</b>
<b>157°</b>	TDZE	<b>107</b>
	Apt Elev	<b>107</b>

# RNAV (GPS) RWY 16

BEVERLY RGNL (BVY)

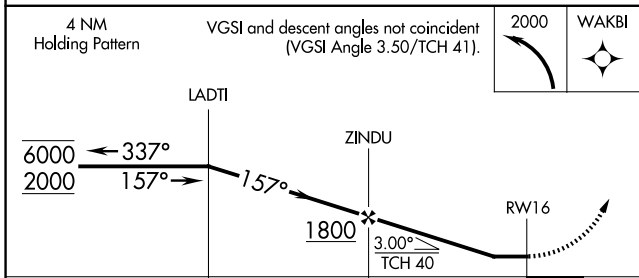
RNP APCH - GPS.		MALS	MISSED APPROACH: Climbing left turn to 2000 direct WAKBI and hold.
<b>⚠</b>	Rwy 16 helicopter visibility reduction below 1 SM NA. Procedure NA at night.	<b>A1</b>	
<b>⚠</b>	Inop table does not apply to LNAV Cat A and B. For inop ALS increase LNAV Cat C and D to 1 3/8 SM.		

ATIS <b>119.2</b>	BOSTON APP CON <b>124.4 279.6</b>	BEVERLY TOWER★ <b>125.2 (CTAF) 1</b>	GND CON <b>121.6</b>	UNICOM <b>122.95</b>
----------------------	--------------------------------------	---	-------------------------	-------------------------

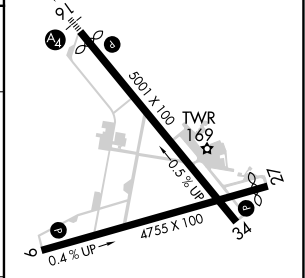


NE-1, 11 JUN 2026 to 09 JUL 2026

NE-1, 11 JUN 2026 to 09 JUL 2026



ELEV 107	TDZE 107
----------	----------



CATEGORY	A	B	C	D
LNAV MDA	620-1	513 (600-1)	620-1 3/8	513 (600-1 3/8)
CIRCLING	620-1	513 (600-1)	820-2 713 (800-2)	820-2 1/4 713 (800-2 1/4)

REL Rwy 34 **1**  
MRL Rws 9-27 and 16-34 **1**