

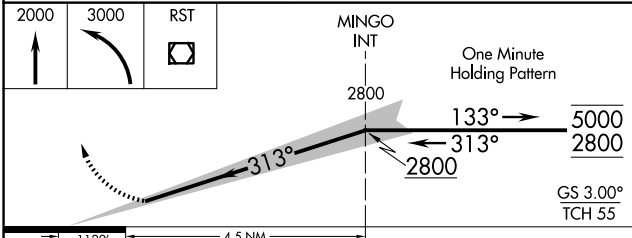
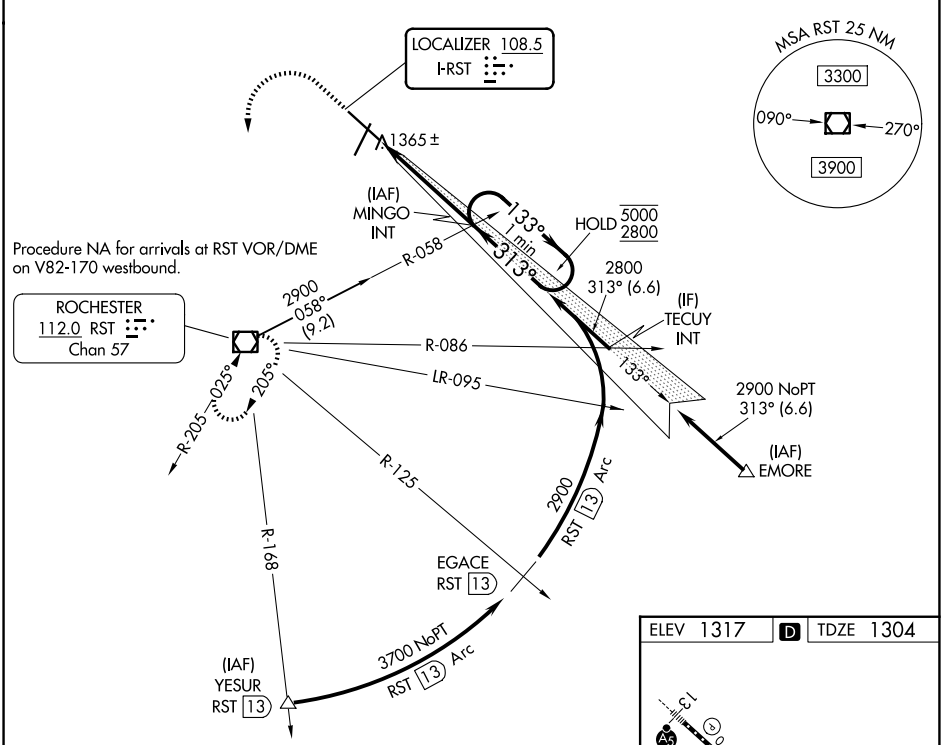
LOC I-RST <b>108.5</b>	APP CRS <b>313°</b>	Rwy Ldg TDZE Apt Elev	<b>9033</b> <b>1304</b> <b>1317</b>
---------------------------	------------------------	-----------------------------	---

# ILS Z RWY 31 (CAT II)

ROCHESTER INTL (RST)

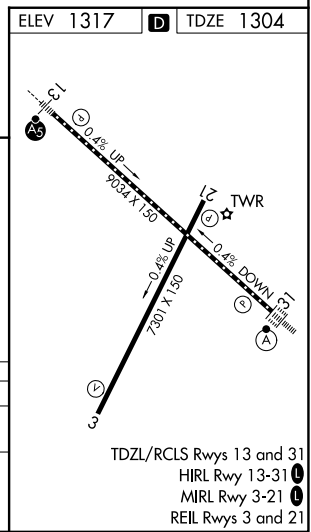
DME required for procedure entry at YESUR.		ALSf-2	MISSED APPROACH: Climb to 2000 then climbing left turn to 3000 direct RST VOR/DME and hold.	
▼ Procedure NA when tower closed.		(A)		

ATIS <b>120.5</b>	ROCHESTER APP CON* <b>119.8 251.125</b>	ROCHESTER TOWER* <b>118.3 (CTAF) 257.8</b>	GND CON <b>121.9</b>	UNICOM <b>122.95</b>
----------------------	--	---	-------------------------	-------------------------



CATEGORY	A	B	C	D
S-ILS 31	RA 104/12 100 DA 1404			

**CATEGORY II ILS - SPECIAL AIRCREW & AIRCRAFT CERTIFICATION REQUIRED**



NC-1, 11 JUN 2026 to 09 JUL 2026

NC-1, 11 JUN 2026 to 09 JUL 2026