

WAAS CH 69621 W03A	APP CRS 027°	Rwy Ldg 7300 TDZE 1317 Apt Elev 1317
--	------------------------	---

RNAV (GPS) RWY 3

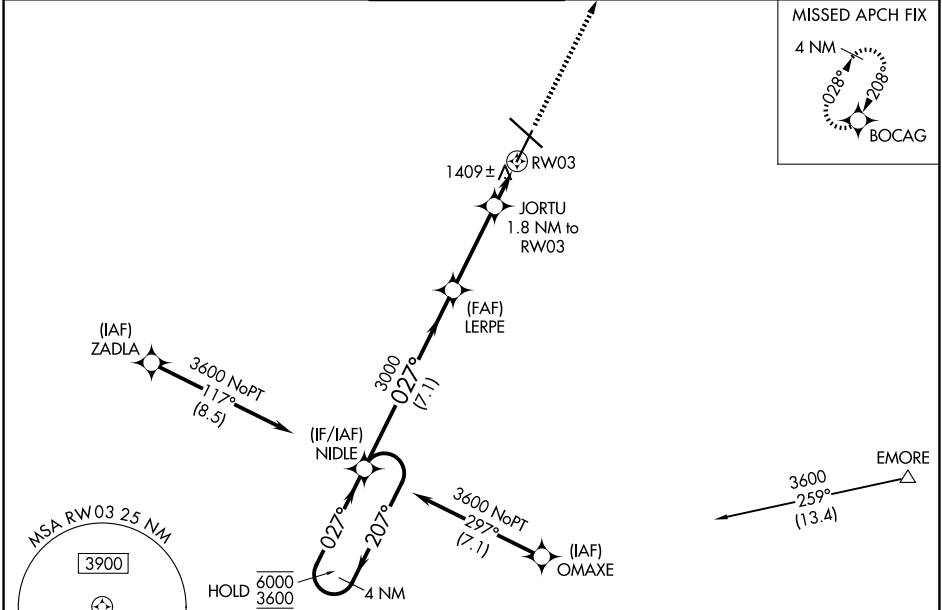
ROCHESTER INTL (RST)

RNP APCH - GPS.

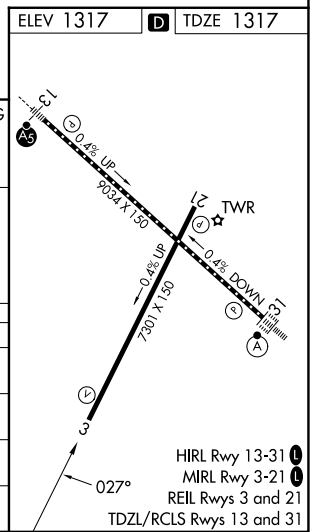
▼ For uncompensated Baro-VNAV systems, LNAV/VNAV NA below -28°C or above 54°C.

MISSED APPROACH: Climb to 3400 direct BOCAG and hold, continue climb-in-hold to 4800.

ATIS 120.5	ROCHESTER APP CON * 119.8 251.125	ROCHESTER TOWER * 118.3 (CTAF) 257.8	GND CON 121.9	UNICOM 122.95
----------------------	---	--	-------------------------	-------------------------

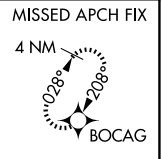


4 NM Holding Pattern		NIDLE		LERPE		JORTU 1.8 NM to RW03		3400 BOCAG	
6000 ← 207°		← 027°		3000		0.9 NM to RW03		↑	
3600		027°		3000		0.9 NM to RW03		3400	
GP 3.00° TCH 47		7.1 NM		3.4 NM		0.9 NM		0.9 NM	
CATEGORY	A	B	C	D					
LPV DA		1567-1	250 (300-1)						
LNAV/VNAV DA		1592-1	275 (300-1)						
LNAV MDA		1660-1	343 (400-1)						
CIRCLING	1720-1 403 (500-1)	1780-1 463 (500-1)	1900-1½ 583 (600-1½)	1900-2 583 (600-2)					



NC-1, 11 JUN 2026 to 09 JUL 2026

NC-1, 11 JUN 2026 to 09 JUL 2026



HIRL Rwy 13-31
MIRL Rwy 3-21
REIL Rws 3 and 21
TDZL/RCLS Rws 13 and 31