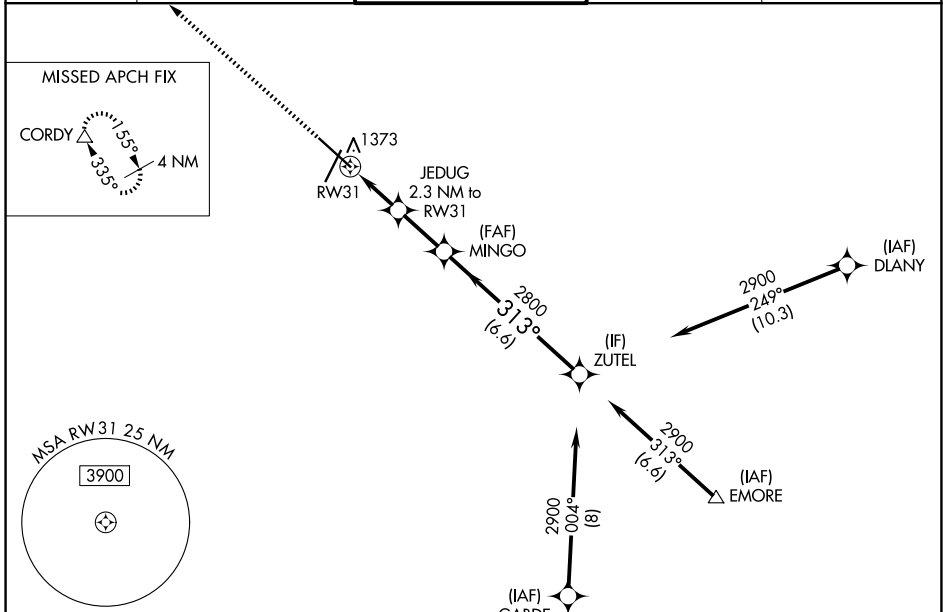


WAAS CH 49028 W31A	APP CRS 313°	Rwy Ldg TDZE Apt Elev	9033 1304 1317
--	------------------------	-----------------------------	---

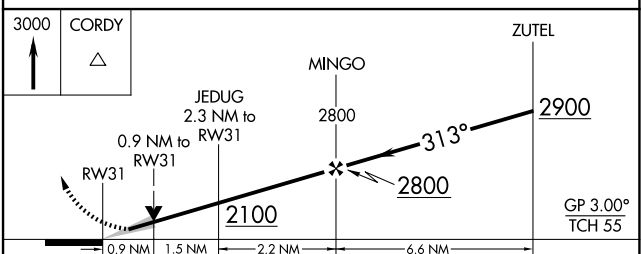
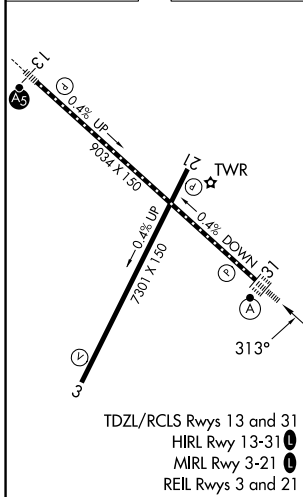
RNAV (GPS) RWY 31

ROCHESTER INTL (RST)

RNP APCH - GPS. ▼ For uncompensated Baro-VNAV systems, LNAV/VNAV NA below -20°C or above 54°C. For inop ALS, increase LNAV/VNAV all Cats visibility to RVR 4500.		ALSF-2 ⓐ	MISSED APPROACH: Climb to 3000 direct CORDY and hold.	
ATIS 120.5	ROCHESTER APP CON* 119.8 251.125	ROCHESTER TOWER* 118.3 (CTAF) 257.8	GND CON 121.9	UNICOM 122.95



ELEV 1317	D	TDZE 1304
-----------	----------	-----------



CATEGORY	A	B	C	D
LPV DA	1504/18		200 (200-½)	
LNAV/VNAV DA	1579/24		275 (300-½)	
LNAV MDA	1640/24	336 (400-½)	1640/26	336 (400-½)
CIRCLING	1720-1 403 (500-1)	1780-1 463 (500-1)	1900-1½ 583 (600-1½)	1900-2 583 (600-2)

NC-1, 11 JUN 2026 to 09 JUL 2026

NC-1, 11 JUN 2026 to 09 JUL 2026