

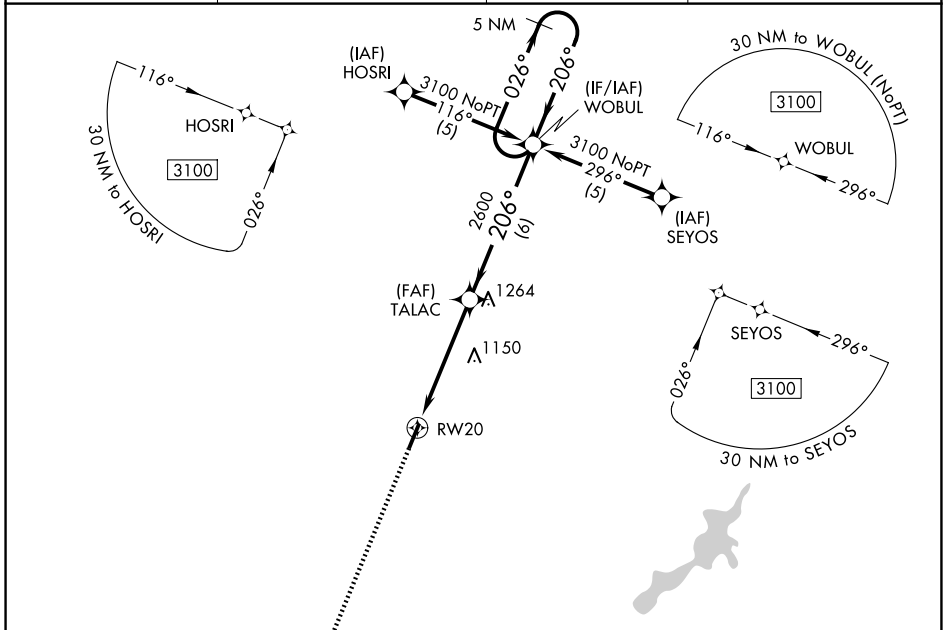
WAAS CH 93601 W20A	APP CRS 206°	Rwy Ldg TDZE Apt Elev	4410 955 957
--	------------------------	-----------------------------	---

RNAV (GPS) RWY 20

DAYTON/WRIGHT BROTHERS (MGY)

RNP APCH:	MALS	MISSED APPROACH: Climb to 3100 direct SOVVO and hold.
<p>▼ Inoperative table does not apply. When local altimeter setting not received, use James M Cox Dayton Intl altimeter setting and increase all DAs/MDAs 60 feet and Circling Cat C/D visibility ¼ SM. Rwy 20 helicopter visibility reduction below ¾ SM NA. VDP NA when using James M Cox Dayton Intl altimeter setting.</p>		

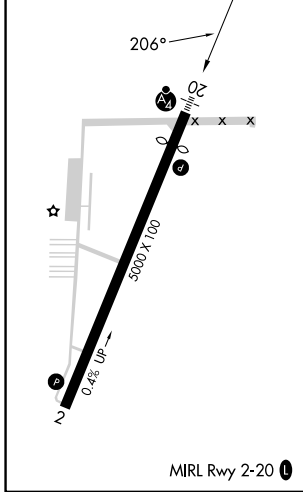
ASOS 118.375	COLUMBUS APP CON 118.85 269.275	CLNC DEL 119.4	UNICOM 122.8 (CTAF)
------------------------	---	--------------------------	-------------------------------



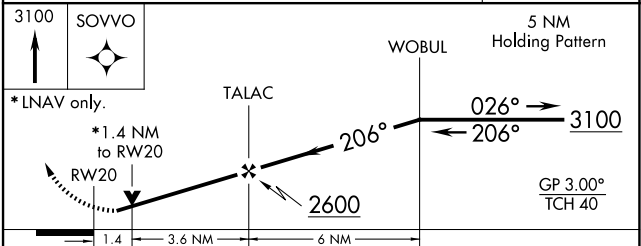
EC-2, 11 JUN 2026 to 09 JUL 2026

EC-2, 11 JUN 2026 to 09 JUL 2026

ELEV 957	D	TDZE 955
----------	----------	----------



MIRL Rwy 2-20



CATEGORY	A	B	C	D
LPV DA	1294-1 ¼ 339 (400-1 ½)			
LNAV MDA	1440-1	485 (500-1)	1440-1 ½ 485 (500-1 ½)	1440-1 ½ 485 (500-1 ½)
CIRCLING	1480-1 ¼ 523 (600-1 ¼)	1520-1 ¼ 563 (600-1 ¼)	1660-2 703 (800-2)	1660-2 ¼ 703 (800-2 ¼)