

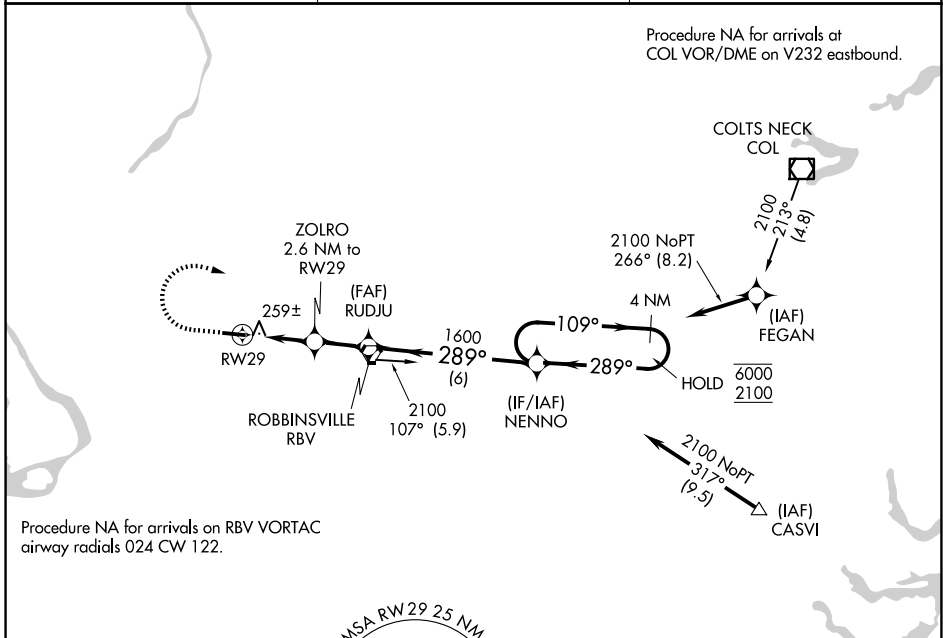
APP CRS	Rwy Ldg	<b>3975</b>
<b>289°</b>	TDZE	<b>118</b>
	Apt Elev	<b>118</b>

# RNAV (GPS) RWY 29

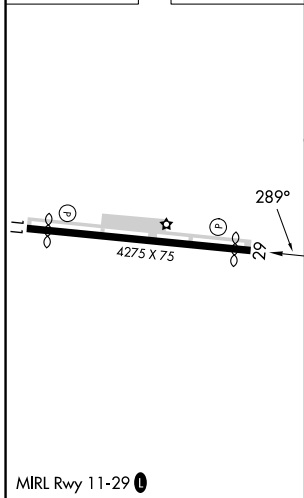
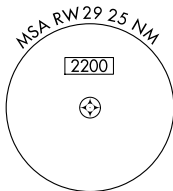
TRENTON-ROBBINSVILLE (N87)

RNP APCH.	MISSED APPROACH: Climb to 1000, then climbing right turn to 2100 direct NENNO and hold.
<p><b>▼</b> Procedure NA at night. Rwy 29 helicopter visibility reduction below 1 SM NA. Use Wrightstown altimeter setting.</p> <p><b>▲</b> NA</p>	

MC GUIRE APP CON <b>126.475 363.8</b>	UNICOM <b>123.0</b> (CTAF)	<b>123.3</b> <b>0</b>
--	-------------------------------	-----------------------



ELEV 118	TDZE 118
----------	----------



1000	2100	NENNO	Visual Segment - Obstacles.			
			RUDJU	NENNO	4 NM Holding Pattern	
			ZOLRO 2.6 NM to RWY 29		109° → 6000	← 289° 2100
			RWY 29		289°	
			980	1600		
			2.6 NM	1.9 NM	6 NM	
CATEGORY	A	B	C	D		
LNAV MDA	540-1	422 (500-1)	540-1½	422 (500-1½)		
CIRCLING	680-1	562 (600-1)	680-1½	760-2	562 (600-1½)	642 (700-2)

NE-2, 11 JUN 2026 to 09 JUL 2026

NE-2, 11 JUN 2026 to 09 JUL 2026