

APP CRS	Rwy Ldg	<b>4100</b>
<b>331°</b>	TDZE	<b>750</b>
	Apt Elev	<b>750</b>

# RNAV (GPS) RWY 33

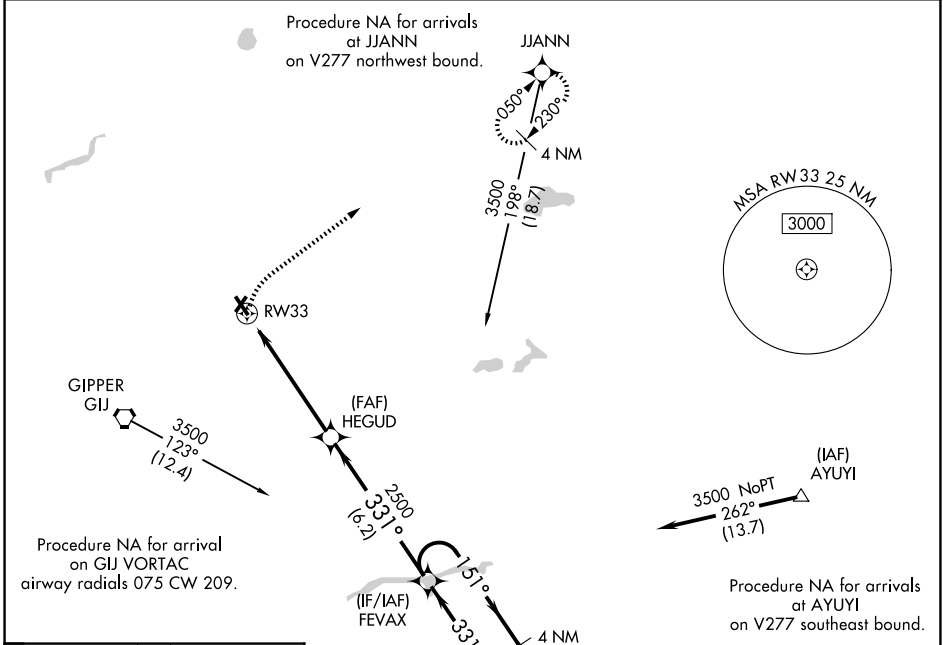
JERRY TYLER MEML (3TR)

RNP APCH.

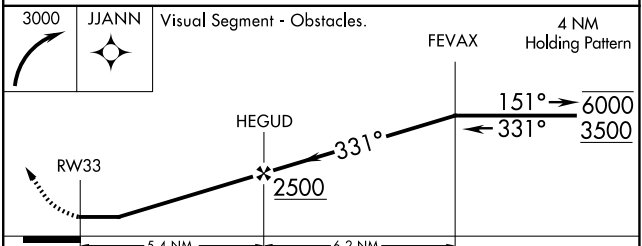
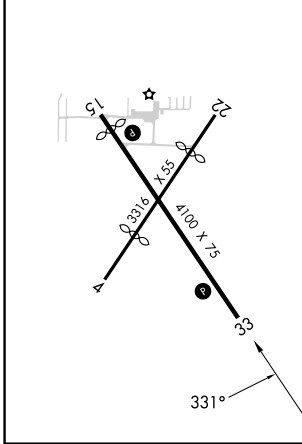
▼ Procedure NA at night. Rwy 33 helicopter visibility reduction below 1 SM NA.  
 ▲ NA Use South Bend altimeter setting; when not received, use Elkhart altimeter setting; increase all MDA 20 feet and LNAV Cat C visibility 1/8 SM.

MISSED APPROACH: Climbing right turn to 3000 direct JJANN and hold.

SBN ASOS	SOUTH BEND APP CON*	GCO	UNICOM
<b>120.675</b>	<b>118.55 257.8</b>	<b>121.725</b>	<b>122.8 (CTAF) 0</b>



ELEV 750	TDZE 750
MIRL Rwy 15-33	
REIL Rwy 15 and 33	



CATEGORY	A	B	C	D
LNAV MDA	1320-1	570 (600-1)	1320-1½ 570 (600-1½)	NA
CIRCLING	1320-1	570 (600-1)	1460-2 710 (800-2)	NA

EC-1, 11 JUN 2026 to 09 JUL 2026

EC-1, 11 JUN 2026 to 09 JUL 2026