

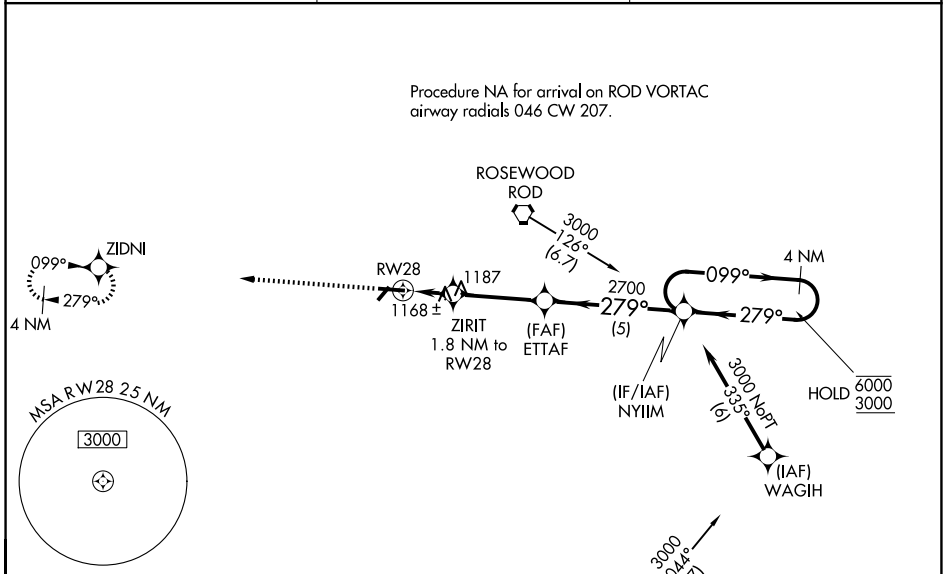
WAAS CH <b>82234</b>	APP CRS <b>279°</b>	Rwy Ldg TDZE Apt Elev	<b>5013</b> <b>1044</b> <b>1044</b>
-------------------------	------------------------	-----------------------------	---

# RNAV (GPS) RWY 28

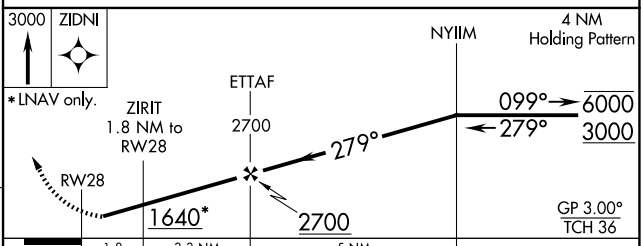
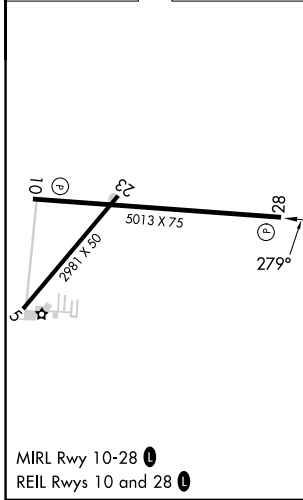
SIDNEY MUNI (SCA)

RNP APCH.  
 ▼ Rwy 28 helicopter visibility reduction below 1 SM NA. Baro-VNAV NA when using James M. Cox Dayton Intl altimeter setting. For uncompensated Baro-VNAV systems, LNAV/VNAV NA below -22°C or above 54°C. When local altimeter setting not received, use James M. Cox Dayton Intl altimeter setting: increase LPV DA to 1355; increase LNAV/VNAV DA to 1365; increase all MDA 60 feet and LNAV Cat C visibility and Circling Cat C visibility ¼ SM. Straight-in hold. Rwy 28 at night, operational VGSI required, remain at or above VGSI glidepath until threshold.  
 MISSED APPROACH: Climb to 3000 direct ZIDNI and hold.

AWOS-3 <b>120.425</b>	COLUMBUS APP CON <b>134.45 294.5</b>	UNICOM <b>123.05 (CTAF) 1</b>
--------------------------	---	----------------------------------



ELEV 1044	TDZE 1044
-----------	-----------



CATEGORY	A	B	C	D
LPV DA		1302-1 258 (300-1)		NA
LNAV/VNAV DA		1312-1 268 (300-1)		NA
LNAV MDA		1420-1 376 (400-1)		NA
CIRCLING	1460-1 416 (500-1)	1520-1 476 (500-1)	1640-1½ 596 (600-1½)	NA

EC-2, 11 JUN 2026 to 09 JUL 2026

EC-2, 11 JUN 2026 to 09 JUL 2026