

APP CRS	Rwy Ldg	5000
228°	TDZE	8
	Apt Elev	9

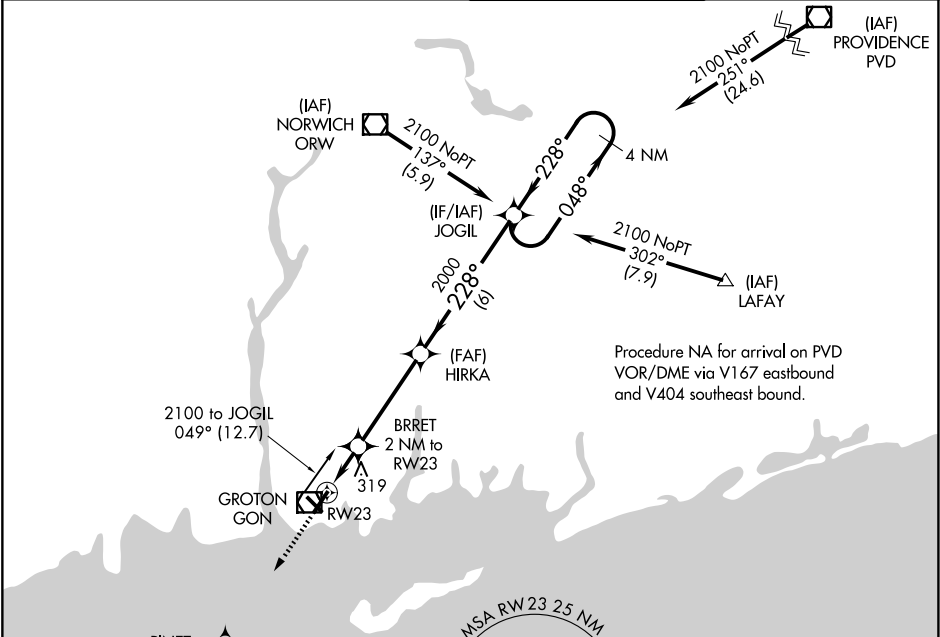
RNAV (GPS) RWY 23

GROTON-NEW LONDON (GON)

RNP APCH - GPS.
 ⚠ Circling Rwy 15 NA at night.
 ⚠ Rwy 23 helicopter visibility reduction below 1 SM NA.

MISSED APPROACH: Climb to 2000 direct PINET and hold.

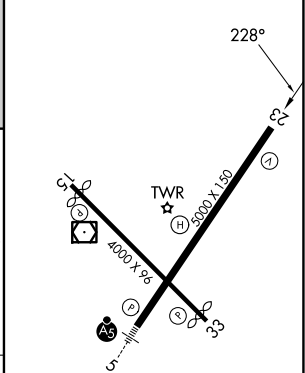
ATIS 127.0	PROVIDENCE APP CON * 125.75 319.2	GROTON TOWER * 125.6 (CTAF) 236.775	GND CON 121.65 236.775
----------------------	---	---	----------------------------------



Procedure NA for arrival on PVD VOR/DME via V167 eastbound and V404 southeast bound.



ELEV	9	TDZE	8
------	---	------	---



2000	PINET	VGSI and descent angles not coincident (VGSI Angle 3.00/TCH 49).		4 NM Holding Pattern
RWY 23		BRRET 2 NM to RWY 23	HIRKA	JOGIL
2 NM		4 NM	6 NM	

CATEGORY	A	B	C	D
LNVA MDA	560-1	552 (600-1)	560-1½	552 (600-1½)
CIRCLING	580-1 571 (600-1)	620-1 611 (700-1)	700-2 691 (700-2)	840-2¾ 831 (900-2¾)

REIL Rwy 23 and 33
 HIRL Rwy 5-23 and 15-33

NE-1, 11 JUN 2026 to 09 JUL 2026

NE-1, 11 JUN 2026 to 09 JUL 2026