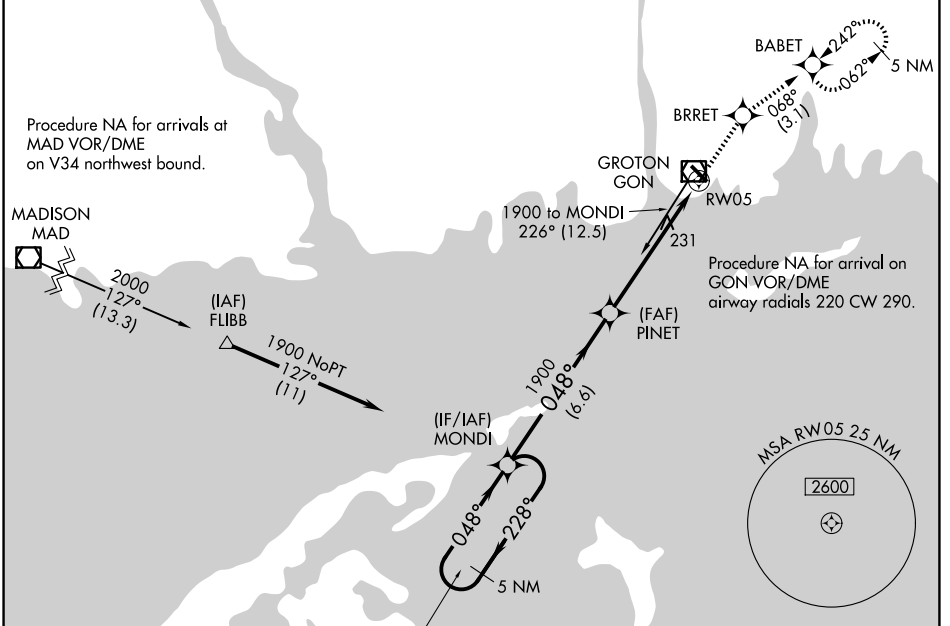


WAAS CH 45521 W05A	APP CRS 048°	Rwy Ldg TDZE Apt Elev	5000 8 9
--	------------------------	-----------------------------	-------------------------------------

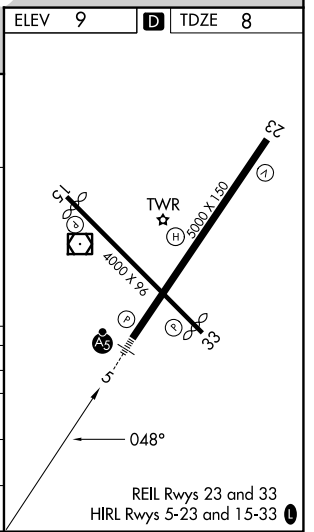
RNAV (GPS) RWY 5

GROTON-NEW LONDON (GON)

RNP APCH - GPS.		MALSR	MISSED APPROACH: Climb to 2100 direct BRRET and on track 068° to BABET and hold, continue climb-in-hold to 2100.
<p>⚠ Circling Rwy 15 NA at night. For uncompensated Baro-VNAV systems, procedure NA below -15°C or above 54°C. For inop ALS, increase LPV all Cats visibility to RVR 4500 and LNAV Cats visibility C/D to 1½%.</p>			
ATIS 127.0	PROVIDENCE APP CON * 125.75 319.2	GROTON TOWER * 125.6 (CTAF) 0 236.775	GND CON 121.65 236.775



5 NM Holding Pattern		2100	BRRET	BABET
<p>MONDI → PINET → RW05</p> <p>GP 3.00° TCH 42</p> <p>6.6 NM 4.3 NM 1.4 NM</p>		↑		Tr 068°
CATEGORY	A	B	C	D
LPV DA	292/24		284 (300-½)	
LNAV/VNAV DA	533/55		525 (600-1)	
LNAV MDA	500/24	492 (500-½)	500/50	492 (500-1)
CIRCLING	580-1 571 (600-1)	620-1 611 (700-1)	700-2 691 (700-2)	840-2¾ 831 (900-2¾)



NE-1, 11 JUN 2026 to 09 JUL 2026

NE-1, 11 JUN 2026 to 09 JUL 2026