

| | | | |
|--|------------------------|-----------------------------|---------------------------------------|
| WAAS CH 90319 W18A | APP CRS 184° | Rwy Ldg TDZE Apt Elev | 6558 80 90 |
|--|------------------------|-----------------------------|---------------------------------------|

RNAV (GPS) RWY 18

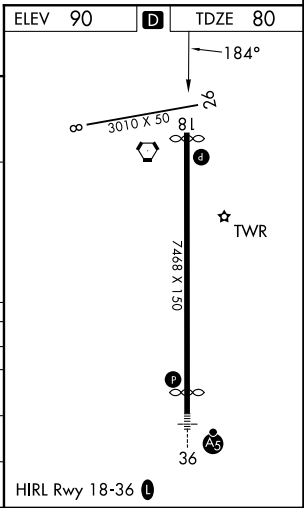
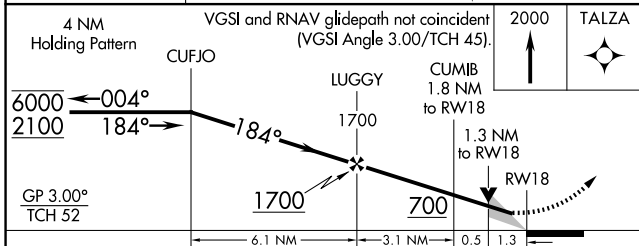
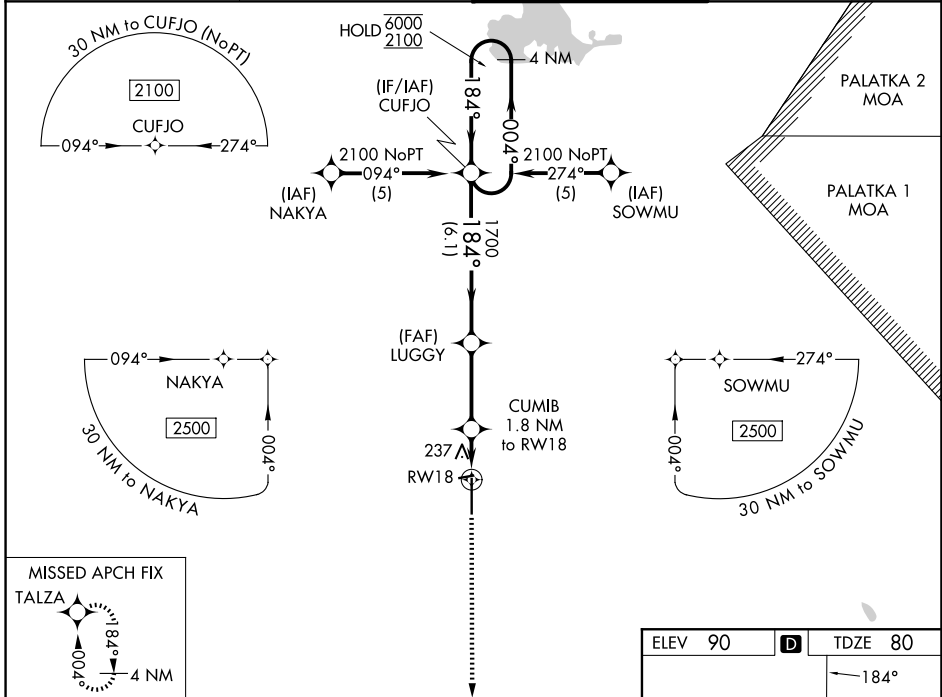
OCALA INTL-JIM TAYLOR FLD (OCF)

RNP APCH-GPS.

⚠ For uncompensated Baro-VNAV systems, LNAV/VNAV NA below -5°C or above 54°C.
⚠ When local altimeter setting not received, use GNV altimeter setting and increase LPV DA to 361 feet and all visibilities ½ SM; increase LNAV/VNAV DA to 595 feet and all visibilities ½ SM, increase all MDA's 100 feet and LNAV visibility Cats C and D ¼ SM and Circling visibility Cats C and D ½ SM. Baro-VNAV and VDP NA when using GNV altimeter setting.

MISSED APPROACH:
Climb to 2000 direct
TALZA and hold.

| | | | |
|------------------------|---|---|-------------------------|
| ATIS 128.125 | JACKSONVILLE APP CON 118.6 251.15 | OCALA TOWER ★ 119.25 (CTAF) 0 | GND CON 121.4 |
|------------------------|---|---|-------------------------|



| CATEGORY | A | B | C | D |
|--------------|-------|-------------|------------------------|------------------------|
| LPV DA | | 280-¾ | 200 (200-¾) | |
| LNAV/VNAV DA | | 514-1¼ | 434 (500-1¼) | |
| LNAV MDA | 540-1 | 460 (500-1) | 540-1¾ | 460 (500-1¾) |
| CIRCLING | 600-1 | 510 (600-1) | 760-1¾ 670 (700-1¾) | 920-2¾ 830 (900-2¾) |

SE-3, 11 JUN 2026 to 09 JUL 2026

SE-3, 11 JUN 2026 to 09 JUL 2026