

|  |                        |  |
|--|------------------------|--|
| WAAS<br>CH <b>58110</b><br><b>W36A</b> | APP CRS<br><b>004°</b> | Rwy Ldg<br>TDZE<br>Apt Elev<br><b>6351</b><br><b>80</b><br><b>90</b> |
|--|------------------------|--|

# RNAV (GPS) RWY 36

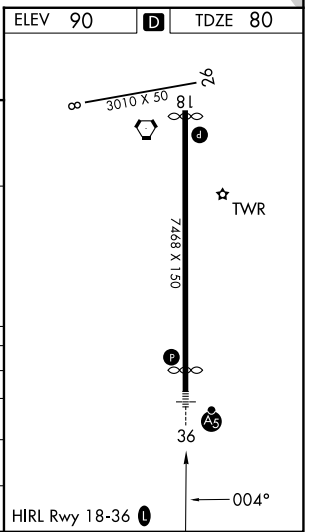
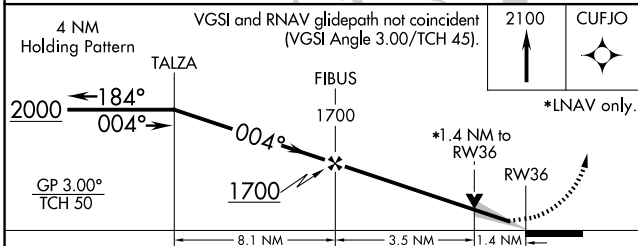
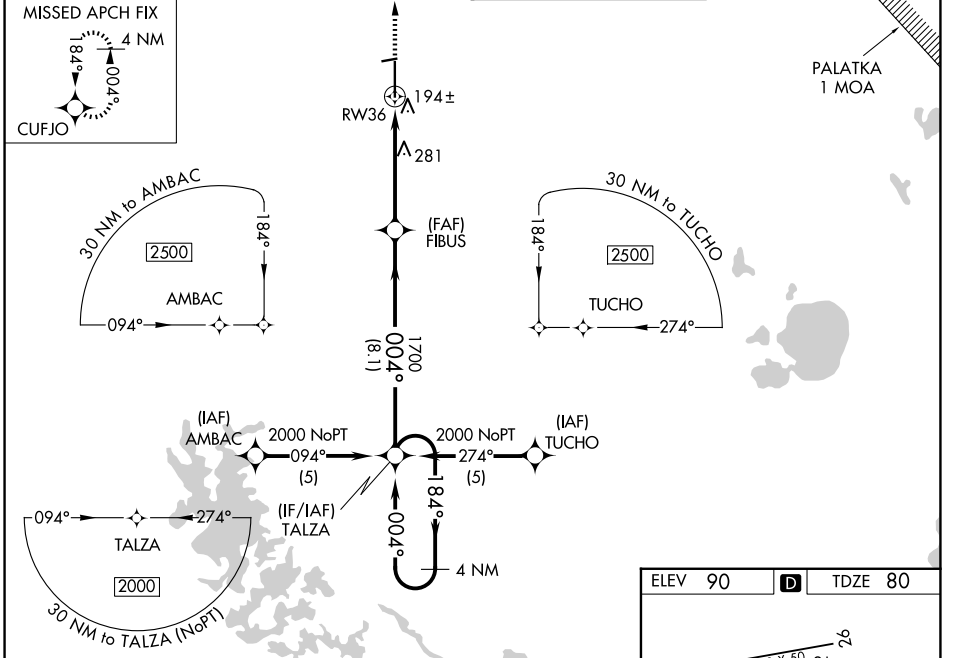
OCALA INTL-JIM TAYLOR FLD (OCF)

**⚠** For uncompensated Baro-VNAV systems, LNAV/VNAV NA below -15°C (5°F) or above 48°C (118°F). DME/DME RNP-0.3 NA. When local altimeter setting not received, use Gainesville altimeter setting: Increase LPV DA to 361 feet, increase LNAV/VNAV DA to 644 feet and all MDAs 100 feet; increase LNAV/VNAV all Cats and LNAV visibility Cats C/D ¼ SM, increase Circling visibility Cat C ½ SM and Cat D ¼ SM. VDP and Baro-VNAV NA when using Gainesville altimeter setting. Inop table does not apply to LPV when using local altimeter setting. For inop MALSRS, increase LNAV Cats A and B visibility to 1 mile. For inop MALSRS when using Gainesville altimeter setting, increase LNAV Cats A and B visibility to 1 mile.

**MALSRS**

**MISSED APPROACH:**  
Climb to 2100 direct CUFJO and hold.

|                               |  |  |                                |
|-------------------------------|--|--|--------------------------------|
| <b>ATIS</b><br><b>128.125</b> | <b>JACKSONVILLE APP CON</b><br><b>118.6 251.15</b> | <b>OCALA TOWER *</b><br><b>119.25 (CTAF) 0</b> | <b>GND CON</b><br><b>121.4</b> |
|-------------------------------|--|--|--------------------------------|



| CATEGORY     | A                 | B | C                   | D |
|--------------|-------------------|---|---------------------|---|
| LPV DA       | 280-¾             |   | 200 (200-¾)         |   |
| LNAV/VNAV DA | 563-1¼            |   | 483 (500-1¼)        |   |
| LNAV MDA     | 540-¾             |   | 460 (500-¾)         |   |
|              |                   |   | 540-1               |   |
|              |                   |   | 460 (500-1)         |   |
| CIRCLING     | 600-1 510 (600-1) |   | 760-1¾ 670 (700-1¾) |   |
|              |                   |   | 920-2¾ 830 (900-2¾) |   |

SE-3, 11 JUN 2026 to 09 JUL 2026

SE-3, 11 JUN 2026 to 09 JUL 2026