

OCALA, FLORIDA

AL-5055 (FAA)

26078

VORTAC OCF <b>113.7</b> Chan <b>84</b>	APP CRS <b>354°</b>	Rwy Ldg TDZE Apt Elev	<b>6351</b> <b>80</b> <b>90</b>
----------------------------------------------	------------------------	-----------------------------	---------------------------------------

# VOR RWY 36

OCALA INTL-JIM TAYLOR FLD (OCF)

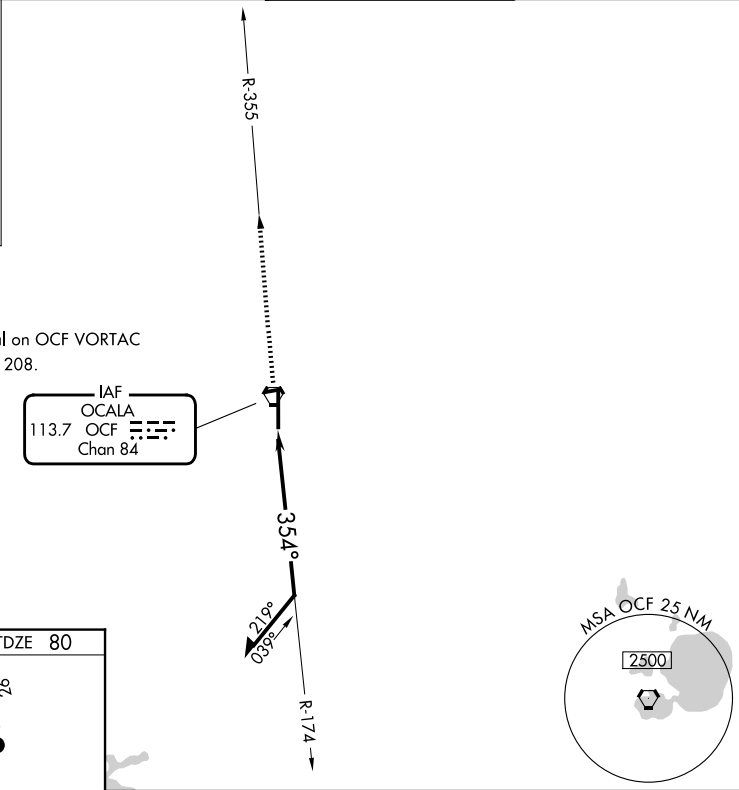
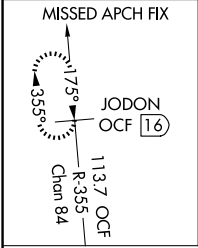
DME required.

For inop ALS, increase S-36 Cats A/B visibility to 1 SM.



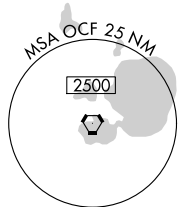
MISSED APPROACH: Climb to 2000 on OCF VORTAC R-355 to JODON/OCF VORTAC 16 DME and hold.

ATIS <b>128.125</b>	JACKSONVILLE APP CON <b>118.6 251.15</b>	OCALA TOWER ★ <b>119.25</b> (CTAF) <b>0</b>	GND CON <b>121.4</b>
------------------------	---------------------------------------------	------------------------------------------------	-------------------------

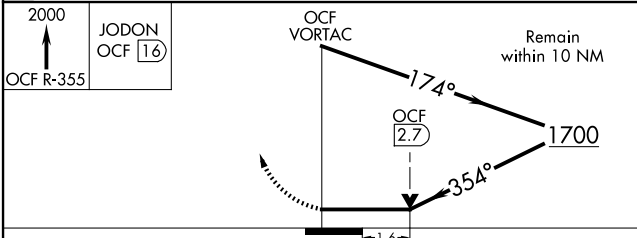
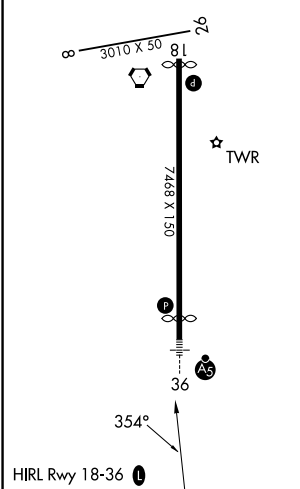


Procedure NA for arrival on OCF VORTAC  
airway radials 129 CW 208.

IAF  
OCALA  
113.7 OCF  
Chan 84



ELEV 90	<b>D</b>	TDZE 80
---------	----------	---------



CATEGORY	A	B	C	D
S-36	640-3/4	560 (600-3/4)	640-1 1/8	560 (600-1 1/8)
CIRCLING	640-1	550 (600-1)	760-1 3/4 670 (700-1 3/4)	920-2 3/4 830 (900-2 3/4)

OCALA, FLORIDA  
Amdt 19 23FEB23

29°10'N-82°13'W

OCALA INTL-JIM TAYLOR FLD (OCF)  
**VOR RWY 36**

SE-3, 11 JUN 2026 to 09 JUL 2026

SE-3, 11 JUN 2026 to 09 JUL 2026