

LOC/DME I-LHJ <b>111.55</b>	APP CRS <b>201°</b>	Rwy Ldg <b>8000</b>
Chan <b>52 (Y)</b>		TDZE <b>871</b>
		Apt Elev <b>871</b>

# ILS RWY 20 (CAT II)

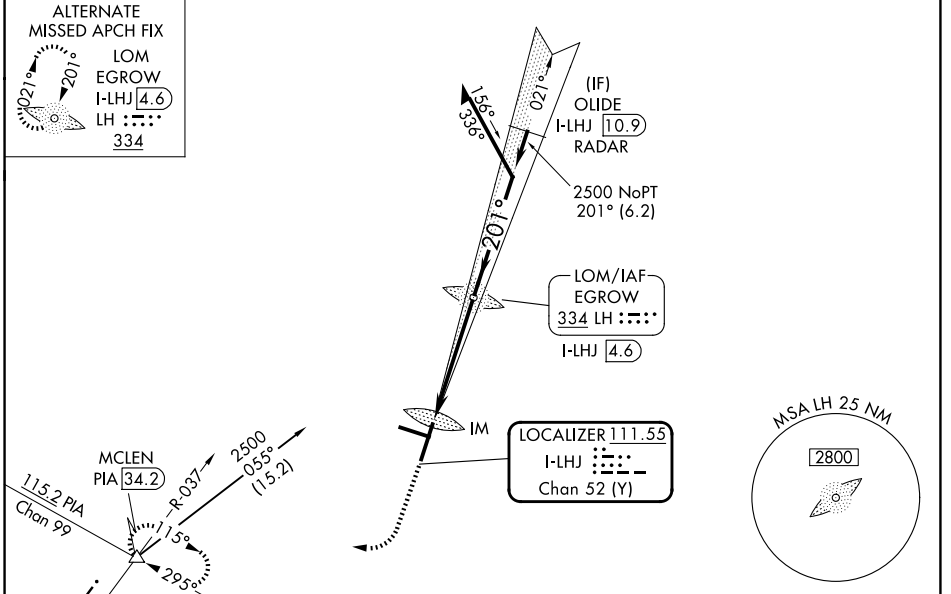
CENTRAL IL RGNL/BLOOMINGTON-NORMAL (BMI)

RADAR required for procedure entry at OLIDE.		ALSIF-2 	MISSED APPROACH: Climb to 1500 then climbing right turn to 3000 on heading 279° and SPI VORTAC R-037 to MCLEN INT/PIA 34.2 DME and hold, continue climb-in-hold to 3000.
Procedure NA when tower closed.			

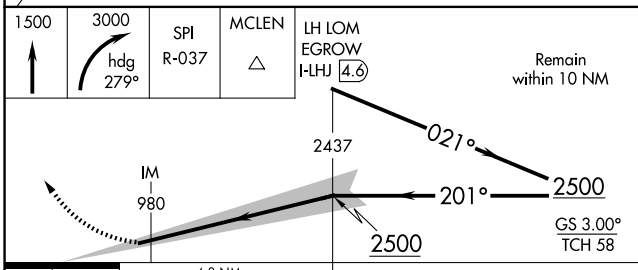
ATIS <b>119.575</b>	SAINT LOUIS APP CON <b>128.725 256.9</b>	BLOOMINGTON TOWER ★ <b>124.6 (CTAF) 269.575</b>	GND CON <b>121.65</b>	UNICOM <b>122.95</b>
------------------------	---	--	--------------------------	-------------------------

ALTERNATE MISSED APCH FIX

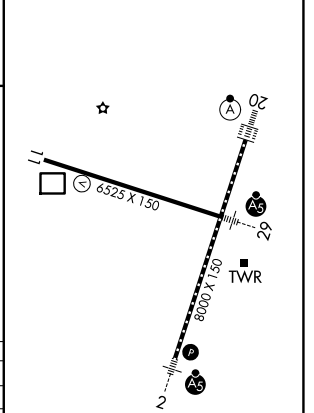
LOM  
EGROW  
I-LHJ **4.6**  
LH : : : :  
**334**



1500 ↑	3000 hdg 279°	SPI R-037	MCLEN △	LH LOM EGROW I-LHJ <b>4.6</b>	Remain within 10 NM
--------	---------------	-----------	---------	-------------------------------	---------------------



ELEV 871	<b>D</b>	TDZE 871
----------	----------	----------



CATEGORY	A	B	C	D
S-ILS-20	RA 122/12 100 DA 971			

## CATEGORY II ILS - SPECIAL AIRCREW & AIRCRAFT CERTIFICATION REQUIRED

TDZ/CL Rwy 20 **1**

HIRL Rwy 2-20 and 11-29 **1**

EC-3, 11 JUN 2026 to 09 JUL 2026

EC-3, 11 JUN 2026 to 09 JUL 2026