


LOC/DME I-BMI <b>110.95</b> Chan <b>46</b> (Y)	APP CRS <b>291°</b>	Rwy Ldg TDZE Apt Elev	<b>6525</b> <b>871</b> <b>871</b>
------------------------------------------------------	------------------------	-----------------------------	-----------------------------------------

# ILS or LOC RWY 29

CENTRAL IL RGNL/BLOOMINGTON-NORMAL (BMI)

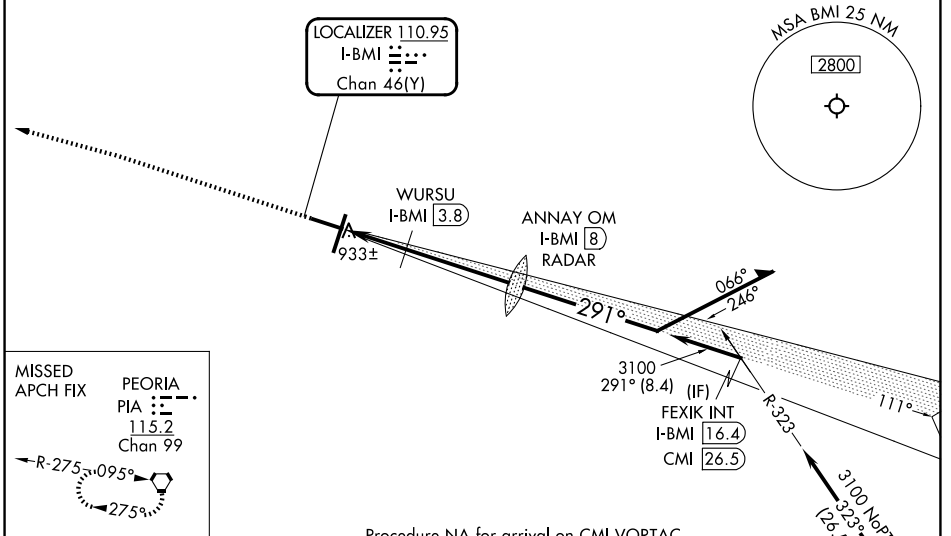
DME required. RADAR required for procedure entry at ANNAY OM.

**⚠** VDP NA when using PIA altimeter setting. For inop ALS, increase S-LOC 29 Cats C and D visibility to RVR 5500. When local altimeter setting not received, use PIA altimeter setting; increase S-ILS 29 DA to 1187 feet; increase all MDAs 120 feet and S-LOC 29 visibility Cats C and D to RVR 5000 and Circling visibility Cats C and D ½ SM. For inop ALS when using PIA altimeter setting: increase S-ILS 29 visibility all Cats to RVR 4500 and S-LOC 29 visibility Cats C and D to 1 ½ SM. \* RVR 1800 authorized with use of FD or AP or HUD to DA (NA when using PIA altimeter setting).

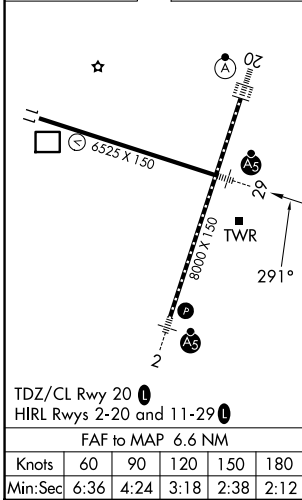
MALSR 

MISSED APPROACH: Climb to 1500 then climbing left turn to 3000 direct PIA VORTAC and hold.

ATIS <b>119.575</b>	SAINT LOUIS APP CON <b>128.725 256.9</b>	BLOOMINGTON TOWER * <b>124.6</b> (CTAF) <b>0 269.575</b>	GND CON <b>121.65</b>	UNICOM <b>122.95</b>
------------------------	---------------------------------------------	-------------------------------------------------------------	--------------------------	-------------------------



ELEV 871	<b>D</b>	TDZE 871
----------	----------	----------



CATEGORY	A	B	C	D
S-ILS 29 *	1071/24 200 (200-½)			
S-LOC 29	1240/24	369 (400-½)	1240/35	369 (400-¾)
CIRCLING	1340-1	469 (500-1)	1620-2¼ 749 (800-2¼)	1620-2½ 749 (800-2½)

EC-3, 11 JUN 2026 to 09 JUL 2026

EC-3, 11 JUN 2026 to 09 JUL 2026