

LOC/DME I-BMI 110.95 Chan 46 (Y)	APP CRS 111°	Rwy Ldg TDZE Apt Elev	6525 871 871
--	------------------------	-----------------------------	---

LOC BC RWY 11

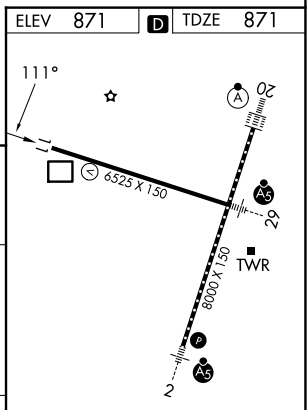
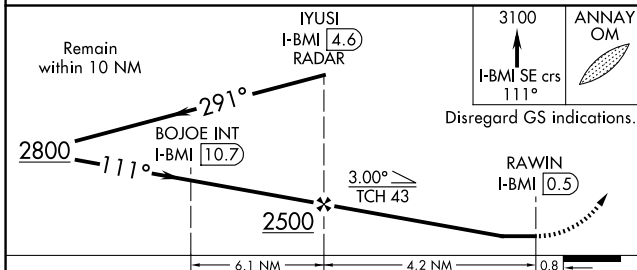
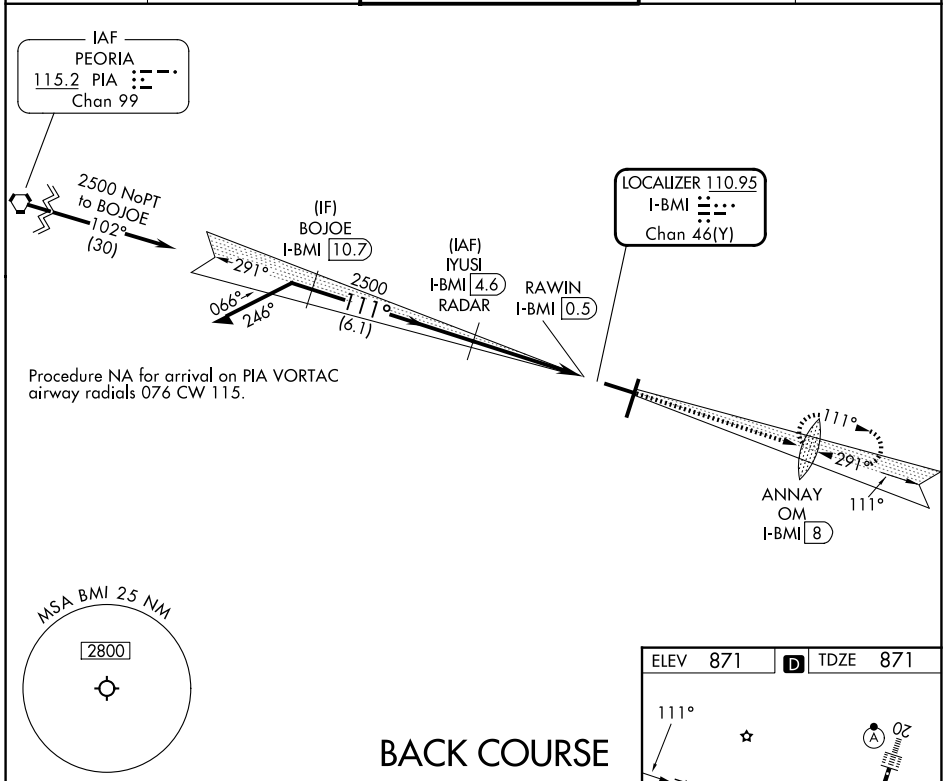
CENTRAL IL RGNL/BLOOMINGTON-NORMAL (BMI)

DME required. RADAR required for procedure entry at IYUSI.

⚠ When local altimeter setting not received, use PIA altimeter setting: increase all MDAs 120 feet and S-LOC BC 11 visibility Cats C and D 3/4 SM, and Circling visibility Cats C and D 1/4 SM.

MISSED APPROACH: Climb to 3100 on I-BMI localizer SE course 111° to ANNAY OM/I-BMI 8 DME and hold, continue climb-in-hold to 3100.

ATIS 119.575	SAINT LOUIS APP CON 128.725 256.9	BLOOMINGTON TOWER * 124.6 (CTAF) 269.575	GND CON 121.65	UNICOM 122.95
------------------------	---	--	--------------------------	-------------------------



CATEGORY	A	B	C	D
S-LOC 11	1280-1	409 (500-1)	1280-1 1/8	409 (500-1 1/8)
CIRCLING	1340-1	469 (500-1)	1620-2 1/4 749 (800-2 1/4)	1620-2 1/2 749 (800-2 1/2)

TDZ/CL Rwy 20
HIRL Rws 2-20 and 11-29

LOC BC RWY 11

EC-3, 11 JUN 2026 to 09 JUL 2026

EC-3, 11 JUN 2026 to 09 JUL 2026