

WAAS CH <b>99303</b> <b>W20A</b>	APP CRS <b>201°</b>	Rwy Ldg TDZE Apt Elev	<b>8000</b> <b>871</b> <b>871</b>
--	------------------------	-----------------------------	---

# RNAV (GPS) RWY 20

CENTRAL IL RGNL/BLOOMINGTON-NORMAL (BMI)

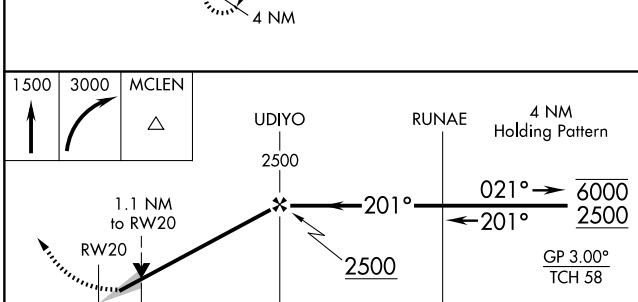
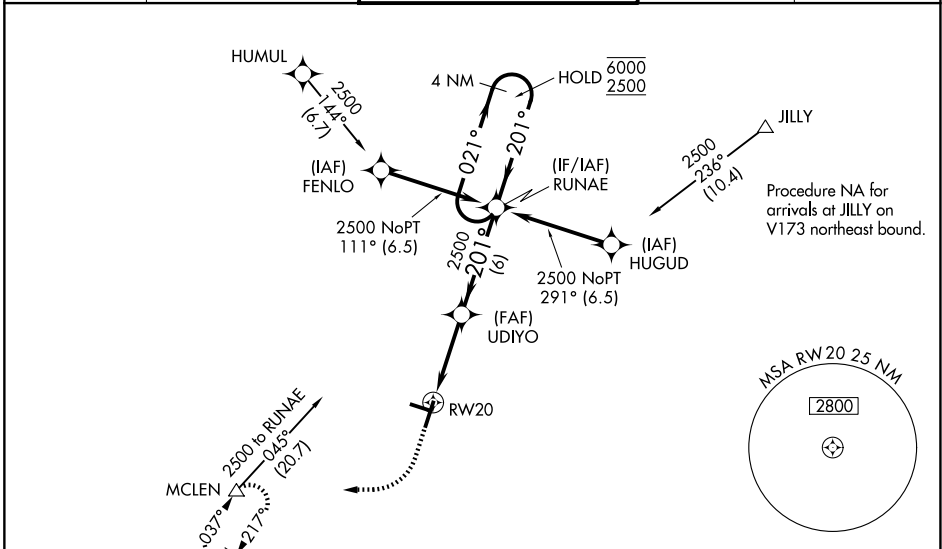
RNP APCH - GPS.

▼ For uncompensated Baro-VNAV systems, LNAV/VNAV NA below -20°C or above 54°C. Baro-VNAV and VDP NA when using PIA altimeter setting. When local altimeter setting not received, use PIA altimeter setting: increase LPV DA to 1187 feet and all visibilities to RVR 2400; increase LNAV/VNAV DA to 1417 feet and all visibilities to RVR 6000; increase all MDAs 120 feet and LNAV visibility Cat C and D to RVR 5500 and Circling visibility Cat C and D ¼ SM. For inop ALS, increase LNAV Cat C and D visibility to RVR 6000. For inop ALS when using PIA altimeter setting, increase LPV all Cats visibility to RVR 4500.

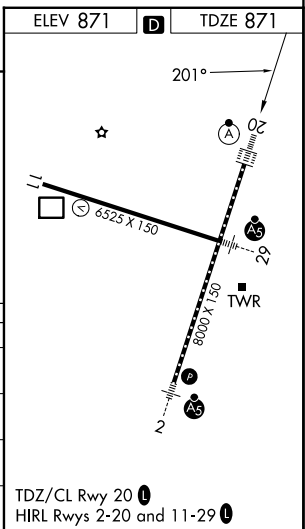
ALS F-2

MISSED APPROACH: Climb to 1500 then climbing right turn to 3000 direct MCLEN and hold.

ATIS <b>119.575</b>	SAINT LOUIS APP CON <b>128.725 256.9</b>	BLOOMINGTON TOWER ★ <b>124.6 (CTAF) 0 269.575</b>	GND CON <b>121.65</b>	UNICOM <b>122.95</b>
------------------------	---	--	--------------------------	-------------------------



CATEGORY	A	B	C	D
LPV DA		1071/18	200 (200-½)	
LNAV/VNAV DA		1301/40	430 (500-¾)	
LNAV MDA	1280/24	409 (500-½)	1280/40	409 (500-¾)
CIRCLING	1340-1	469 (500-1)	1620-2¼ 749 (800-2¼)	1620-2½ 749 (800-2½)



EC-3, 11 JUN 2026 to 09 JUL 2026

EC-3, 11 JUN 2026 to 09 JUL 2026