

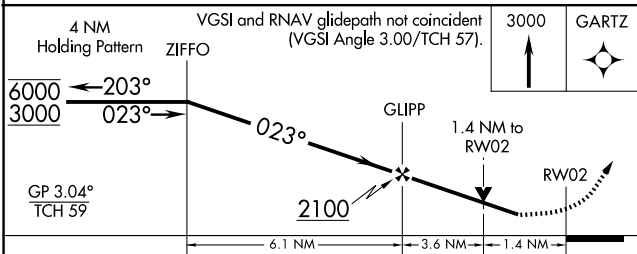
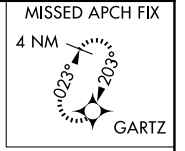
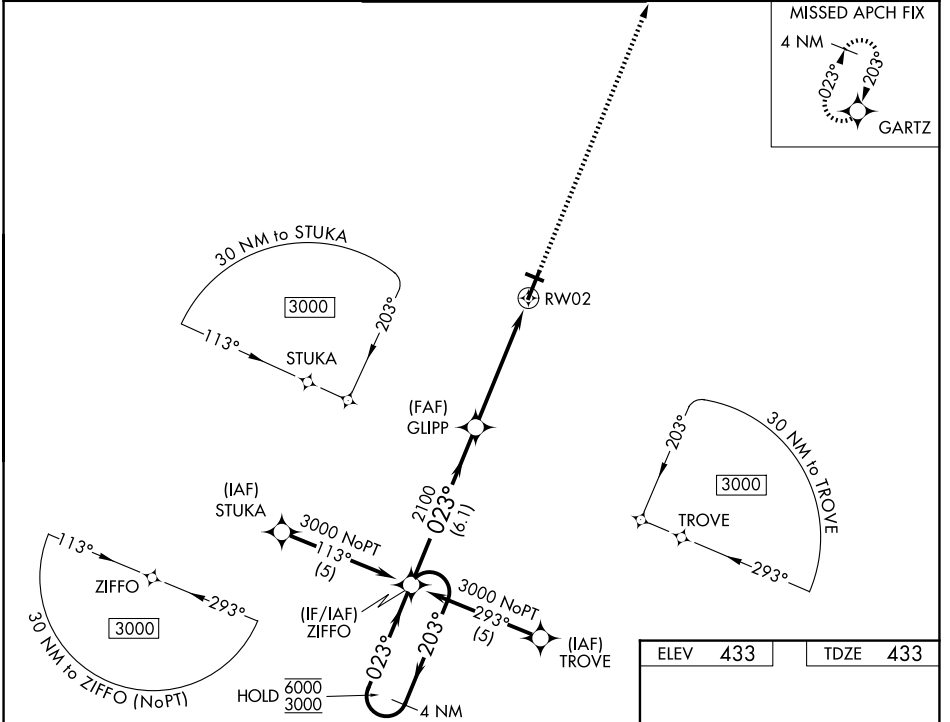
WAAS CH <b>93511</b> <b>W02A</b>	APP CRS <b>023°</b>	Rwy Ldg <b>6007</b> TDZE <b>433</b> Apt Elev <b>433</b>
--	------------------------	---

# RNAV (GPS) RWY 2

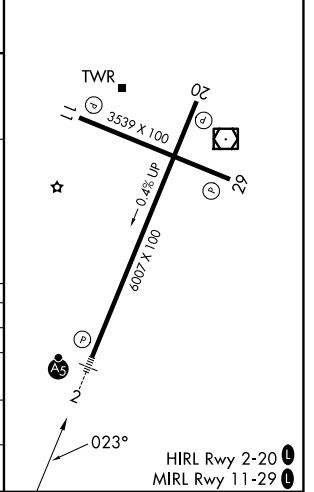
JACKSON RGNL (MKL)

RNP APCH - GPS.		MALSR 	MISSED APPROACH: Climb to 3000 direct GARTZ and hold.
<p><b>▼</b> For uncompensated Baro-VNAV systems, LNAV/VNAV NA below -15°C or above 48°C.  <b>▲</b> For inop ALS, increase visibility LNAV Cats A/B to 1 SM, and Cats C/D to 1 1/8 SM.</p>			

ASOS <b>119.325</b>	MEMPHIS CENTER <b>134.65 316.15</b>	JACKSON TOWER ★ <b>127.15 (CTAF) 0 249.95</b>	GND CON <b>120.9</b>	UNICOM <b>122.95</b>
------------------------	--	--	-------------------------	-------------------------



ELEV 433	TDZE 433
----------	----------



CATEGORY	A	B	C	D
LPV DA		772-3/4	339 (400-3/4)	
LNAV/VNAV DA		886-7/8	453 (500-7/8)	
LNAV MDA	900-3/4	467 (500-3/4)	900-1	467 (500-1)
CIRCLING	900-1 467 (500-1)	920-1 487 (500-1)	960-1 1/2 527 (600-1 1/2)	1080-2 647 (700-2)

SE-1, 11 JUN 2026 to 09 JUL 2026

SE-1, 11 JUN 2026 to 09 JUL 2026