

# RNAV (GPS) RWY 28

WAAS CH <b>67320</b> <b>W28A</b>	APCH CRS <b>275°</b>	Rwy ldg TDZE Arprt Elev <b>4120</b> <b>242</b> <b>243</b>
--	-------------------------	--

[USA]

SIMMONS AAF (FORT BRAGG) (KFBG)

RNP APCH - GPS	MISSED APPROACH: Climb to 700 then climbing left turn to 2100 direct AXILE and hold.
<p>▼ * Circling not authorized at night. When local altimeter setting not received, use Pope AAF altimeter setting.</p>	

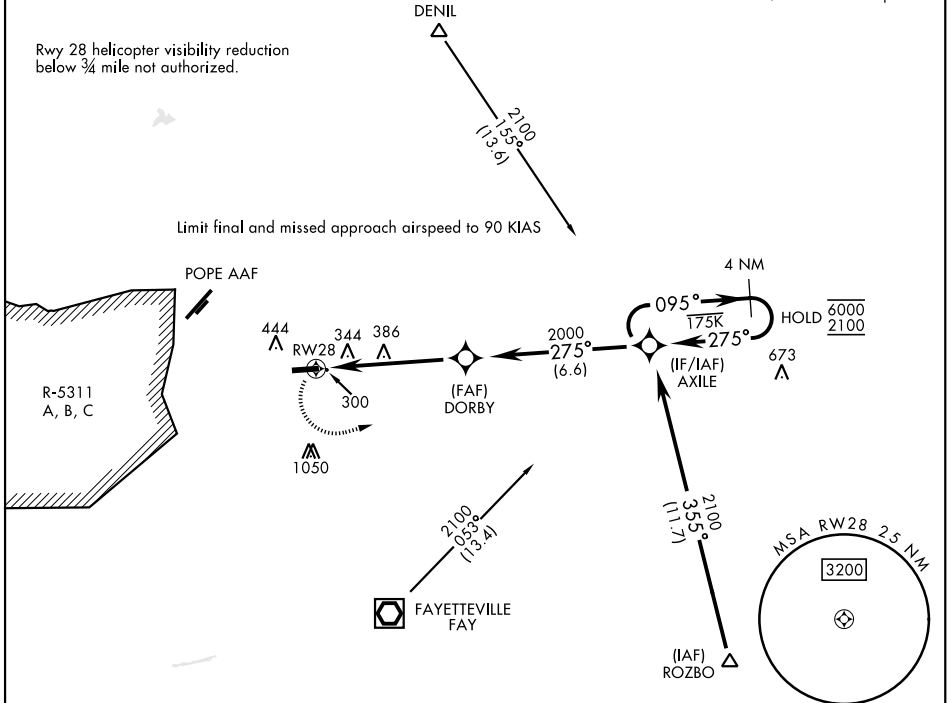
ATIS <b>139.25</b>	FAYETTEVILLE APP CON <b>133.0 290.25</b>	TOWER ★ <b>125.9(CTAF) 240.625</b>	GND CON <b>121.9 229.4</b>
-----------------------	---	---------------------------------------	-------------------------------

For uncompensated Baro-VNAV systems, LNAV/VNAV not authorized below -15°C or above 54°C.

For helicopter use only - 400 H/NM MA CG required.

Rwy 28 helicopter visibility reduction below 3/4 mile not authorized.

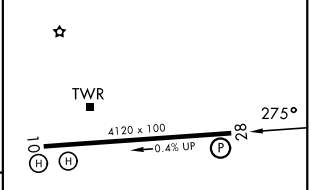
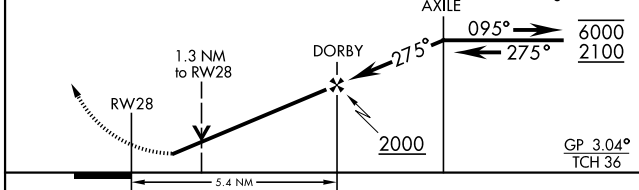
Limit final and missed approach airspeed to 90 KIAS



SE-2, 11 JUN 2026 to 09 JUL 2026

SE-2, 11 JUN 2026 to 09 JUL 2026

700	2100	AXILE	ELEV	243	TDZE	242
-----	------	-------	------	-----	------	-----



CATEGORY	A	B	C	D
LPV DA	492-3/4	250 (300-3/4)	NOT AUTHORIZED	
LNAV/VNAV DA	680-1 1/4	438 (500-1 1/4)	NOT AUTHORIZED	
LNAV MDA	680-1	438 (500-1)	NOT AUTHORIZED	
CIRCLING*	760-1	517 (600-1)	NOT AUTHORIZED	

MIRL Rwy 10-28
REIL Rwy 28

# RNAV (GPS) RWY 28