

WAAS CH 63020 W15A	APP CRS 148°	Rwy Ldg TDZE Apt Elev	4107 745 745
--	------------------------	-----------------------------	---

RNAV (GPS) RWY 15L

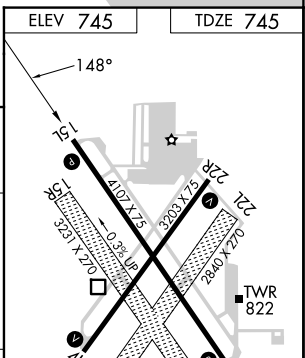
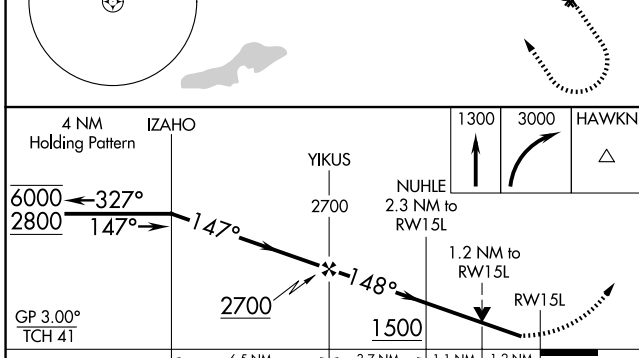
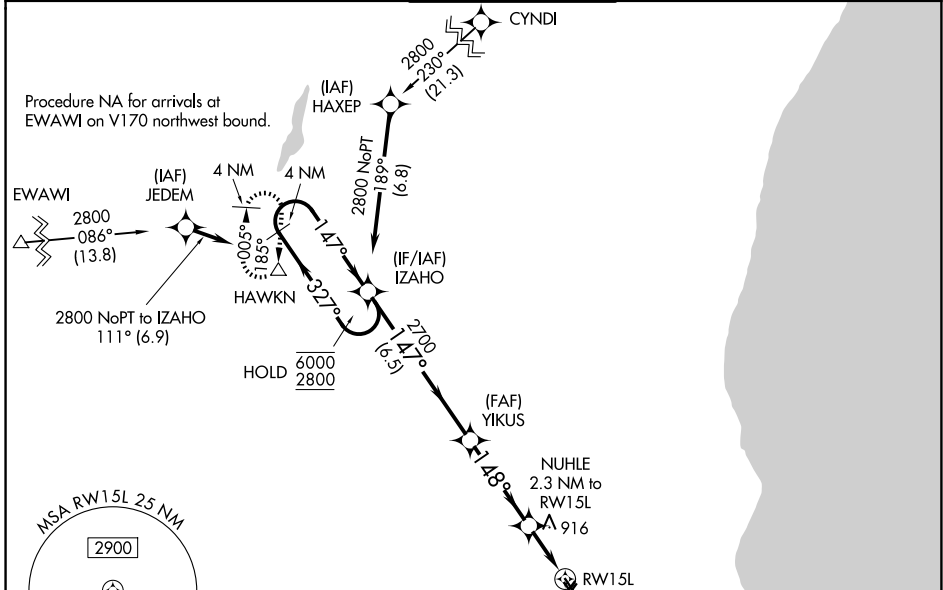
LAWRENCE J TIMMERMAN (MWC)

RNP APCH - GPS.

▼ Rwy 15L helicopter visibility reduction below ¾ SM NA.
 ▲ Circling NA to Rwys 4R, 15R, 22L and 33L.
 ▲ For uncompensated Baro-VNAV systems, LNAV/VNAV NA below -16°C or above 54°C.
 Circling Rwy 04L, 33R NA at night.

MISSED APPROACH:
 Climb to 1300 then
 climbing right turn to
 3000 direct HAWKN
 and hold.

ATIS 128.3	MILWAUKEE APP CON 125.35 307.0	TIMMERMAN TOWER ★ 120.5 (CTAF) 0	GND CON 121.7	UNICOM 122.95
----------------------	--	--	-------------------------	-------------------------



CATEGORY	A	B	C	D
LPV DA		995-¾	250 (300-¾)	
LNAV/VNAV DA		1180-1¼	435 (500-1¼)	
LNAV MDA	1180-1	435 (500-1)	1180-1¼	435 (500-1¼)
CIRCLING	1220-1 475 (500-1)	1340-1 595 (600-1)	1360-1¾ 615 (700-1¾)	1560-2¾ 815 (900-2¾)

REIL Rwys 4L, 22R, 15L and 33R ①
 MIRL Rwys 4L-22R and 15L-33R ①

EC-3, 11 JUN 2026 to 09 JUL 2026

EC-3, 11 JUN 2026 to 09 JUL 2026