

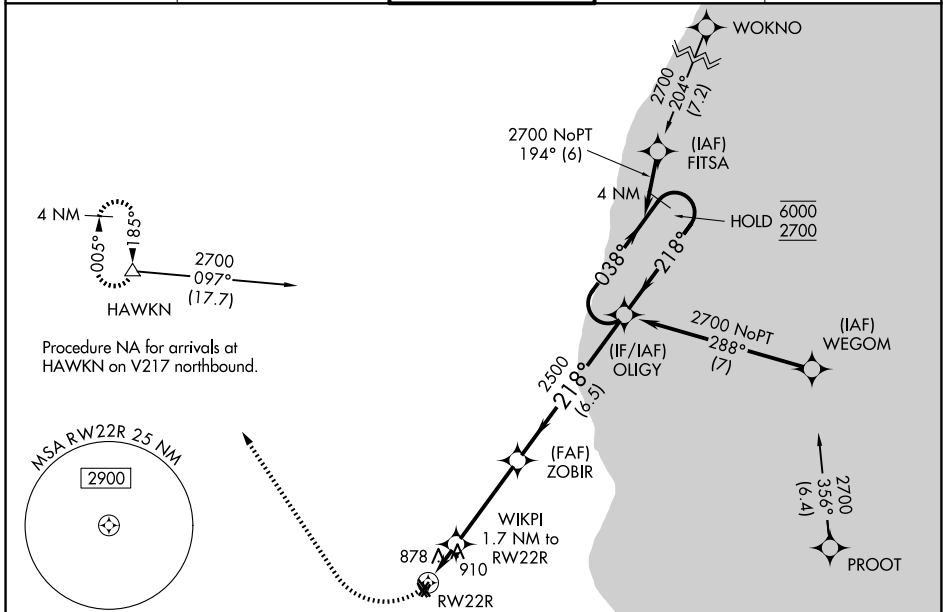
WAAS CH 69524 W22A	APP CRS 218°	Rwy Ldg TDZE 738 Apt Elev 745	3203
--	------------------------	---	-------------

RNAV (GPS) RWY 22R

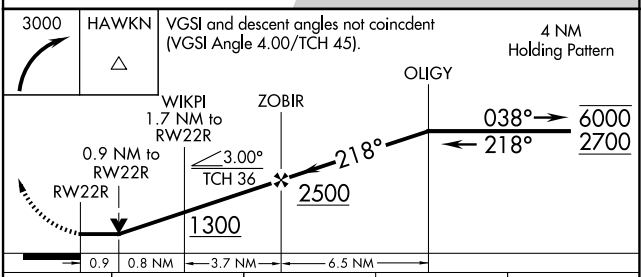
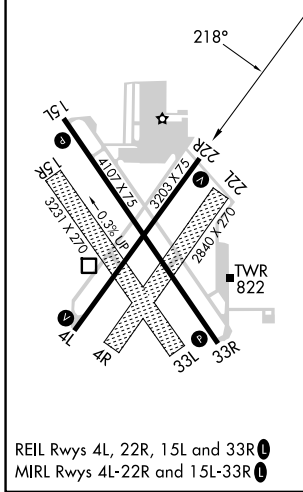
LAWRENCE J TIMMERMAN (MWC)

RNP APCH - GPS.		MISSED APPROACH: Climbing right turn to 3000 direct HAWKN and hold.		
<p>▼ Rwy 22R helicopter visibility reduction below 3/4 SM NA. ▲ Circling NA to Rwys 4R, 15R, 22L and 33L. Circling Rwy 4L, 33R NA at night.</p>				

ATIS 128.3	MILWAUKEE APP CON 125.35 307.0	TIMMERMAN TOWER ★ 120.5 (CTAF) 0	GND CON 121.7	UNICOM 122.95
----------------------	--	--	-------------------------	-------------------------



ELEV 745	TDZE 738
----------	----------



CATEGORY	A	B	C	D
LP MDA	1160-1	422 (500-1)	1160-1¼	422 (500-1¼)
LNAV MDA	1160-1	422 (500-1)	1160-1¼	422 (500-1¼)
CIRCLING	1220-1 475 (500-1)	1340-1 595 (600-1)	1360-1¾ 615 (700-1¾)	1560-2¾ 815 (900-2¾)

EC-3, 11 JUN 2026 to 09 JUL 2026

EC-3, 11 JUN 2026 to 09 JUL 2026