

APP CRS	Rwy Ldg	12001
260°	TDZE	4629
	Apt Elev	4719

RNAV (GPS) RWY 26

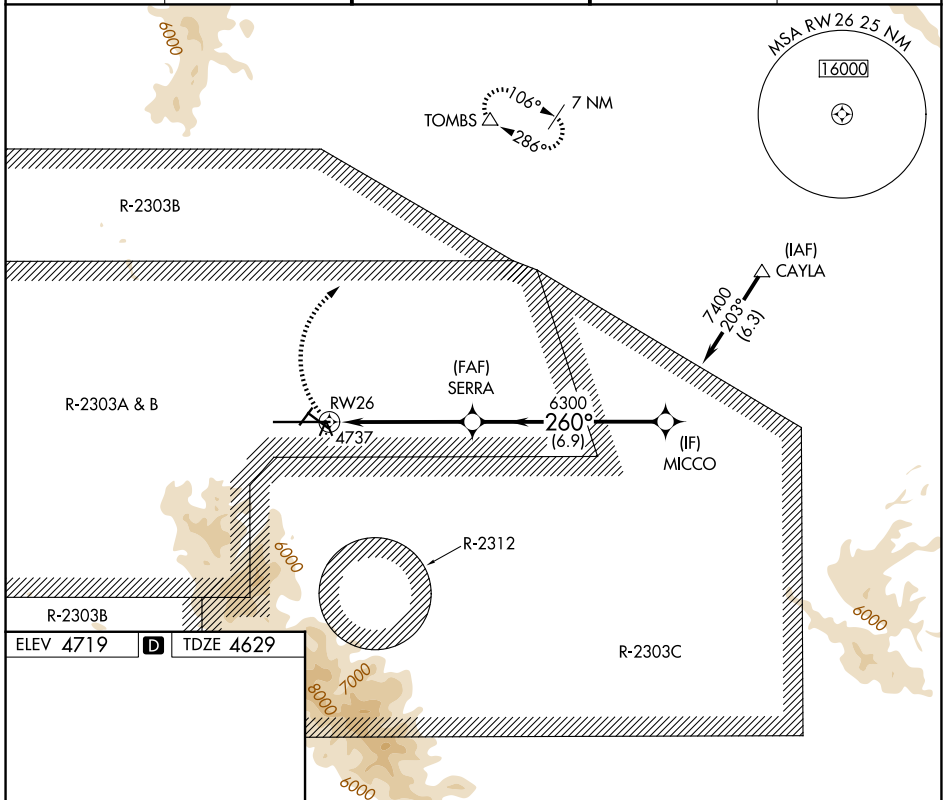
SIERRA VISTA MUNI-LIBBY AAF (FHU)

RNP APCH - GPS.

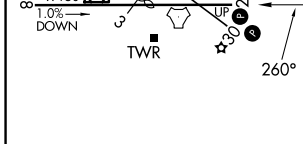
▽
▲ Circling NA south of runways 8 and 30.

MISSED APPROACH: Climbing right turn to 9500 direct TOMBS and hold, continue climb-in-hold to 9500.

ATIS 134.75 263.025	LIBBY AAF GCA* 127.05 254.25	LIBBY TOWER* 124.95 (CTAF) 284.75	GND CON 121.7 268.7	UNICOM 122.95
-------------------------------	--	---	-------------------------------	-------------------------



ELEV 4719	D	TDZE 4629
-----------	----------	-----------



9500	TOMBS	VGSi and descent angles not coincident (VGSi Angle 3.00/TCH 50).		MICCO
		SERRA		
		1.1 NM to RWY 26	6.9 NM	
		1.1	4	

CATEGORY	A	B	C	D
LNAV MDA	5040-1	411 (400-1)	5040-1¼	411 (400-1¼)
CIRCLING	5160-1 441 (500-1)	5180-1 461 (500-1)	5180-1½ 461 (500-1½)	5280-2 561 (600-2)

HIRL Rwy 8-26 **1**
MIRL Rwy 3-21 and 12-30 **1**

SW-4, 11 JUN 2026 to 09 JUL 2026

SW-4, 11 JUN 2026 to 09 JUL 2026