

WAAS CH <b>65629</b> <b>W15A</b>	APP CRS <b>152°</b>	Rwy Ldg <b>6500</b> TDZE <b>11</b> Apt Elev <b>15</b>
--	------------------------	---

# RNAV (GPS) RWY 15

LAKE CHARLES RGNL (LCH)

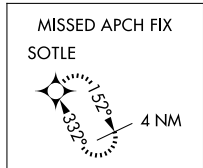
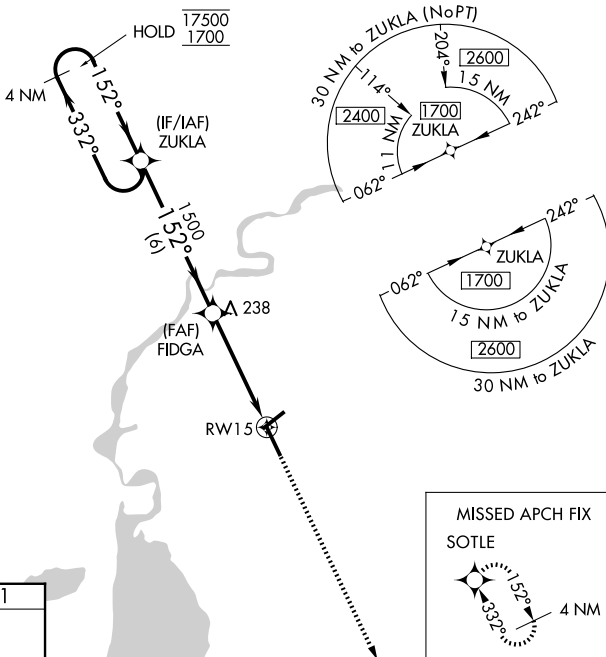
RNP APCH - GPS.

**⚠** For uncompensated Baro-VNAV systems, LNAV/VNAV NA below -3°C or above 43°C.  
**ASR** For inop ALS, increase LNAV/VNAV all Cats visibility to RVR 4500 and LNAV Cats C and D visibility to 1 3/8 SM.  
 \* RVR 1800 authorized with use of FD or AP or HUD to DA.

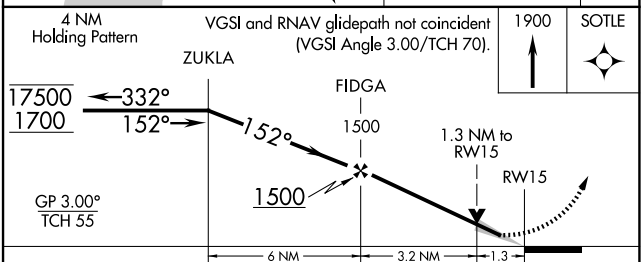
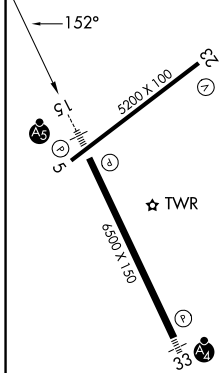


**MISSED APPROACH:**  
Climb to 1900 direct SOTLE and hold.

ATIS <b>118.75</b>	LAKE CHARLES APP CON* <b>119.35 353.75</b>	LAKE CHARLES TOWER* <b>120.7 (CTAF) 257.8</b>	GND CON <b>121.8</b>	UNICOM <b>122.95</b>
-----------------------	---	--	-------------------------	-------------------------



ELEV 15	<b>D</b>	TDZE 11
---------	----------	---------



CATEGORY	A	B	C	D
LPV DA *	211/24		200 (200-1/2)	
LNAV/VNAV DA	300/24		289 (300-1/2)	
LNAV MDA	500/24	489 (500-1/2)	500/50	489 (500-1)
CIRCLING	500-1	485 (500-1)	580-1 1/2 565 (600-1 1/2)	680-2 665 (700-2)

REIL Rwys 5 and 23  
 MIRL Rwy 5-23 **Ⓛ**  
 HIRL Rwy 15-33 **Ⓛ**

SC-4, 11 JUN 2026 to 09 JUL 2026

SC-4, 11 JUN 2026 to 09 JUL 2026