

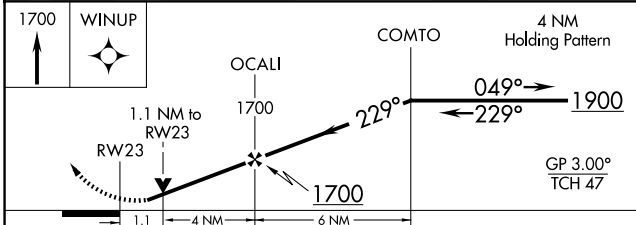
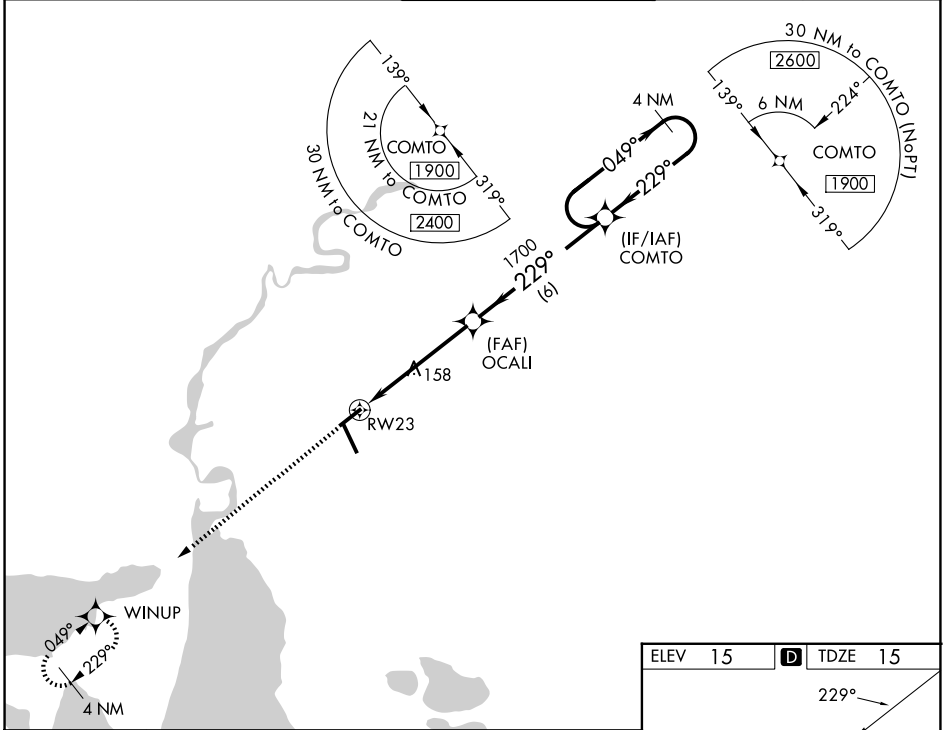
WAAS CH 61041 W23A	APP CRS 229°	Rwy Ldg TDZE Apt Elev	5200 15 15
----------------------------------------	------------------------	-----------------------------	---------------------------------------

RNAV (GPS) RWY 23

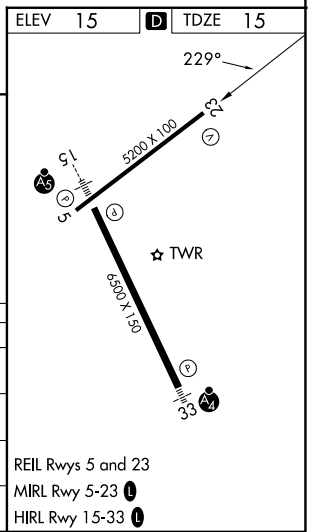
LAKE CHARLES RGNL (LCH)

RNP APCH - GPS.	MISSED APPROACH: Climb to 1700 direct WINUP and hold.
ASR For uncompensated Baro-VNAV systems, LNAV/VNAV NA below -2°C or above 54°C. Rwy 23 helicopter visibility reduction below 3/4 SM NA.	

ATIS 118.75	LAKE CHARLES APP CON* 119.35 353.75	LAKE CHARLES TOWER* 120.7 (CTAF) 257.8	GND CON 121.8	UNICOM 122.95
-----------------------	-----------------------------------------------	--------------------------------------------------	-------------------------	-------------------------



CATEGORY	A	B	C	D
LPV DA		265-3/4	250 (300-3/4)	
LNAV/VNAV DA		301-7/8	286 (300-7/8)	
LNAV MDA	420-1	405 (500-1)	420-1 1/8	405 (500-1 1/8)
CIRCLING	440-1 425 (500-1)	480-1 465 (500-1)	580-1 1/2 565 (600-1 1/2)	680-2 665 (700-2)



SC-4, 11 JUN 2026 to 09 JUL 2026

SC-4, 11 JUN 2026 to 09 JUL 2026