

LOC I-PSK 110.9	APP CRS 058°	Rwy Ldg TDZE Apt Elev	6201 2105 2105
---------------------------	------------------------	-----------------------------	---

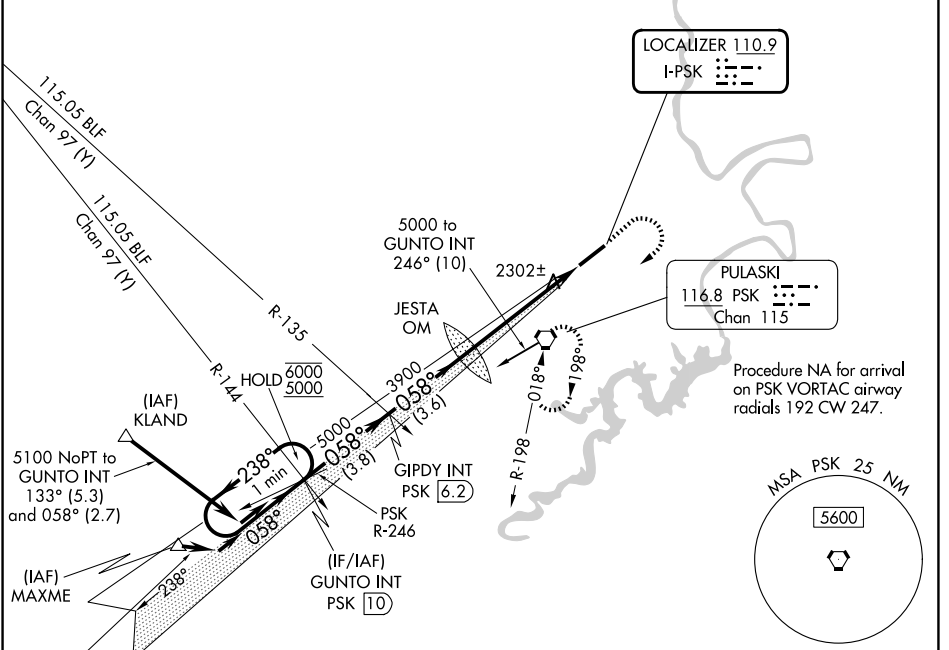
ILS or LOC Z RWY 6

NEW RIVER VALLEY (PSK)

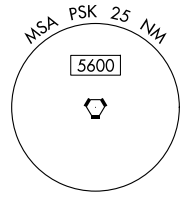
NA Inop table does not apply to S-ILS 6 all Cats and S-LOC 6 Cats A and B. For inop ALS, increase S-LOC 6 Cat C/D visibility to 1 3/8 SM. Circling NA for Cat D northwest of Rwy 6-24.

MALSR MISSED APPROACH: Climb to 3000 then climbing right turn to 5000 direct PSK VORTAC and hold, continue climb-in-hold to 5000.

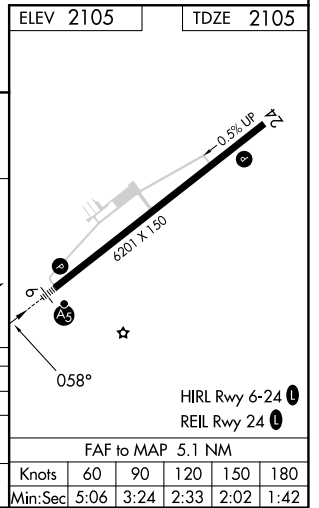
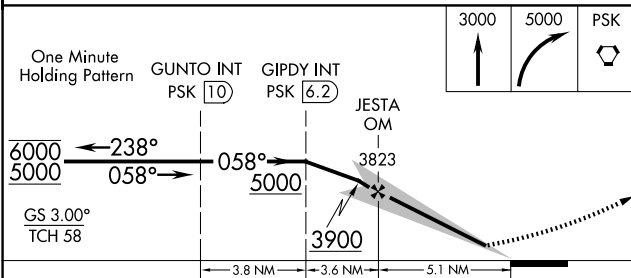
AWOS-3 127.375	ROANOKE APP CON 126.0 339.8	ROANOKE CLNC DEL 121.7	UNICOM 122.7 (CTAF)
--------------------------	---------------------------------------	----------------------------------	-------------------------------



Procedure NA for arrival on PSK VORTAC airway radials 192 CW 247.



ELEV 2105	TDZE 2105
-----------	-----------



CATEGORY	A	B	C	D
S-ILS 6		2305-1	200 (200-1)	
S-LOC 6		2560-1	455 (500-1)	
CIRCLING	2620-1 515 (600-1)	2680-1 575 (600-1)	2780-2 675 (700-2)	2780-2 1/4 675 (700-2 1/4)

FAF to MAP 5.1 NM		Knots	60	90	120	150	180
Min:Sec		5:06	3:24	2:33	2:02	1:42	

NE-3, 11 JUN 2026 to 09 JUL 2026

NE-3, 11 JUN 2026 to 09 JUL 2026