

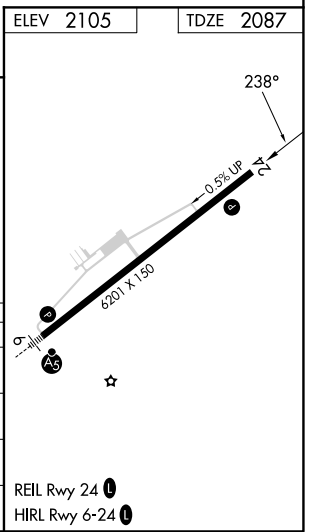
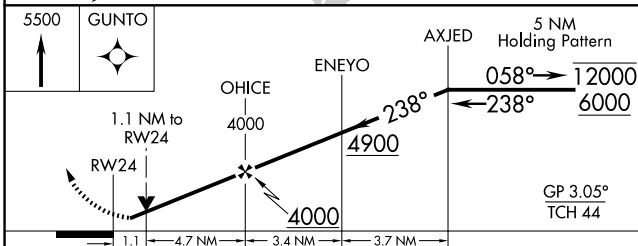
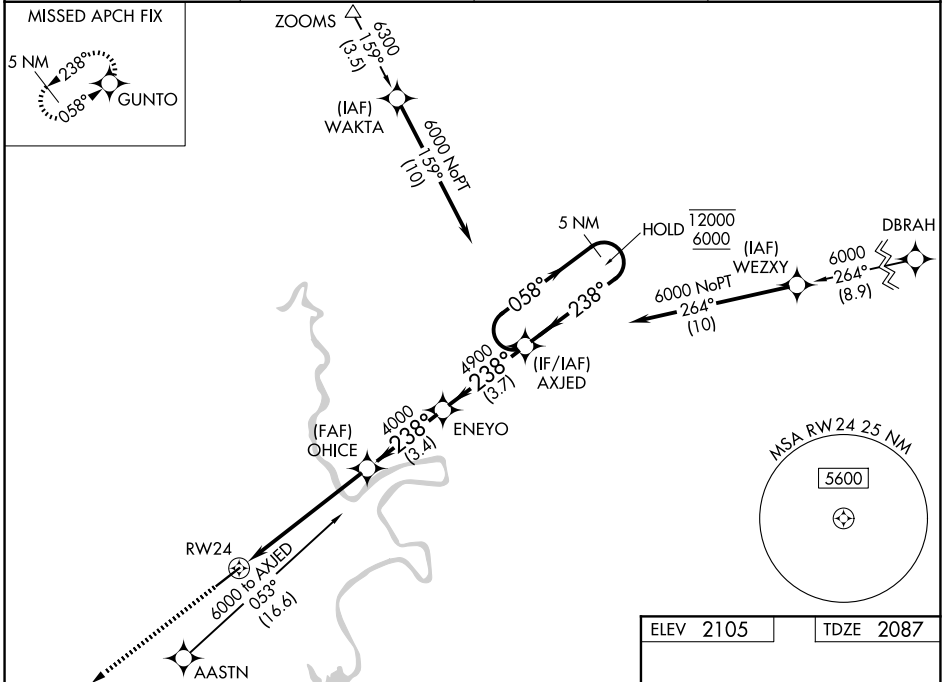
WAAS CH 86227 W24A	APP CRS 238°	Rwy Ldg TDZE Apt Elev	6201 2087 2105
--	------------------------	-----------------------------	---

RNAV (GPS) RWY 24

NEW RIVER VALLEY (PSK)

RNP APCH - GPS.		MISSED APPROACH: Climb to 5500 direct GUNTO and hold, continue climb-in-hold.
<p>▼ Circling NA for Cat D northwest of Rwy 6-24. For uncompensated Baro-VNAV systems, LNAV/VNAV NA below -19°C or above 54°C. Rwy 24 helicopter visibility reduction below 3/4 SM NA. Baro-VNAV and VDP NA when using BCB altimeter setting.</p>		

AWOS-3 127.375	ROANOKE APP CON 126.0 339.8	ROANOKE CLNC DEL 121.7	UNICOM 122.7 (CTAF) 0
--------------------------	---------------------------------------	----------------------------------	---------------------------------



CATEGORY	A	B	C	D
LPV DA	2337-1		250 (300-1)	
LNAV/VNAV DA	2502-1 1/8		415 (400-1 1/8)	
LNAV MDA	2480-1	393 (400-1)	2480-1 1/8	393 (400-1 1/8)
CIRCLING	2640-1 535 (600-1)	2680-1 575 (600-1)	2780-2 675 (700-2)	2780-2 1/4 675 (700-2 1/4)

NE-3, 11 JUN 2026 to 09 JUL 2026

NE-3, 11 JUN 2026 to 09 JUL 2026