

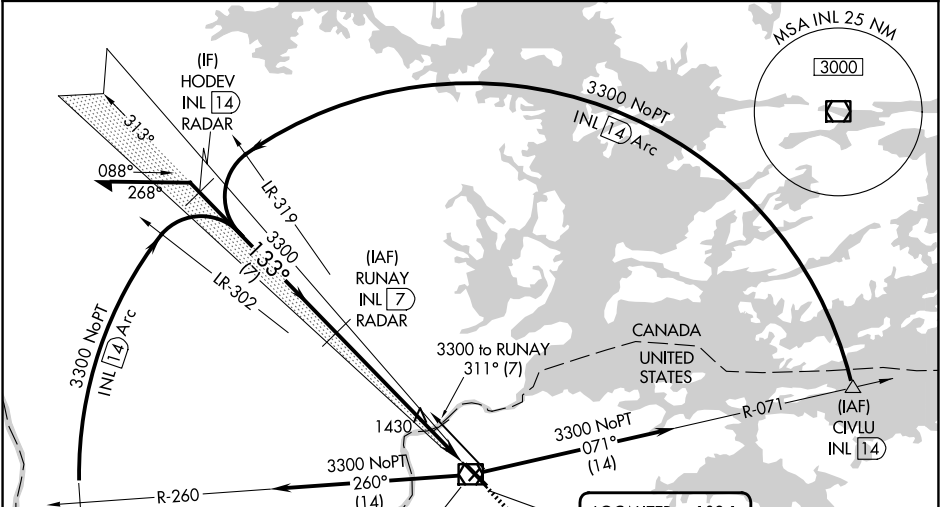
LOC I-ABK 109.1	APP CRS 133°	Rwy Ldg TDZE Apt Elev	7400 1184 1182
---------------------------	------------------------	-----------------------------	---

ILS or LOC RWY 13

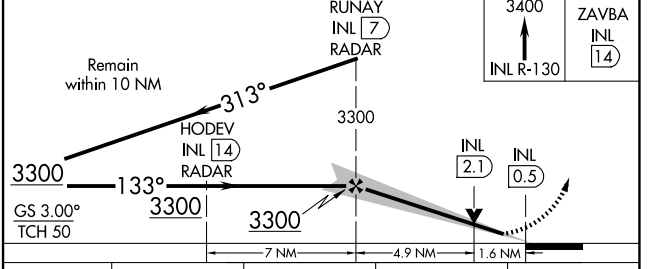
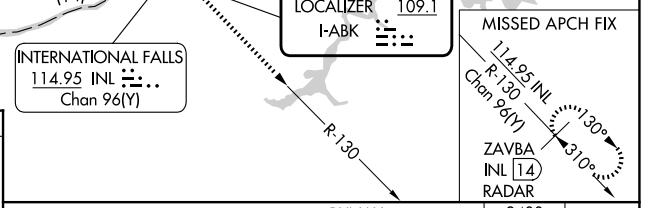
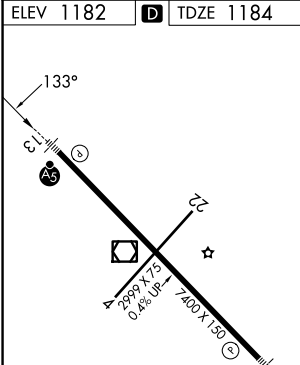
FALLS INTL/EINARSON FLD (INL)

DME or RADAR required.	MALSR 	MISSED APPROACH: Climb to 3400 on INL VOR/DME R-130 to ZAVBA/INL 14 DME/RADAR and hold.
Circling Rwy 4, 22 NA at night. Caution opposing ILS continuously on. DME from INL VOR/DME. DME use requires simultaneous reception of I-ABK and INL DME.		

ASOS 120.0	MINNEAPOLIS CENTER 120.9 377.1	UNICOM 122.8 (CTAF)
----------------------	--	-------------------------------



ELEV 1182	D	TDZE 1184
-----------	----------	-----------



CATEGORY	A	B	C	D
S-ILS 13	1384-½ 200 (200-½)			
S-LOC 13	1760-½	576 (600-½)	1760-¼	576 (600-1¼)
CIRCLING	1760-1	578 (600-1)	1900-2 718 (800-2)	1900-2½ 718 (800-2½)

NC-1, 11 JUN 2026 to 09 JUL 2026

NC-1, 11 JUN 2026 to 09 JUL 2026