

# ORSKY3.ORSKY) 26134 ORSKY THREE DEPARTURE

AL-5094 (FAA)

FLYING CLOUD (FCM)  
MINNEAPOLIS, MINNESOTA

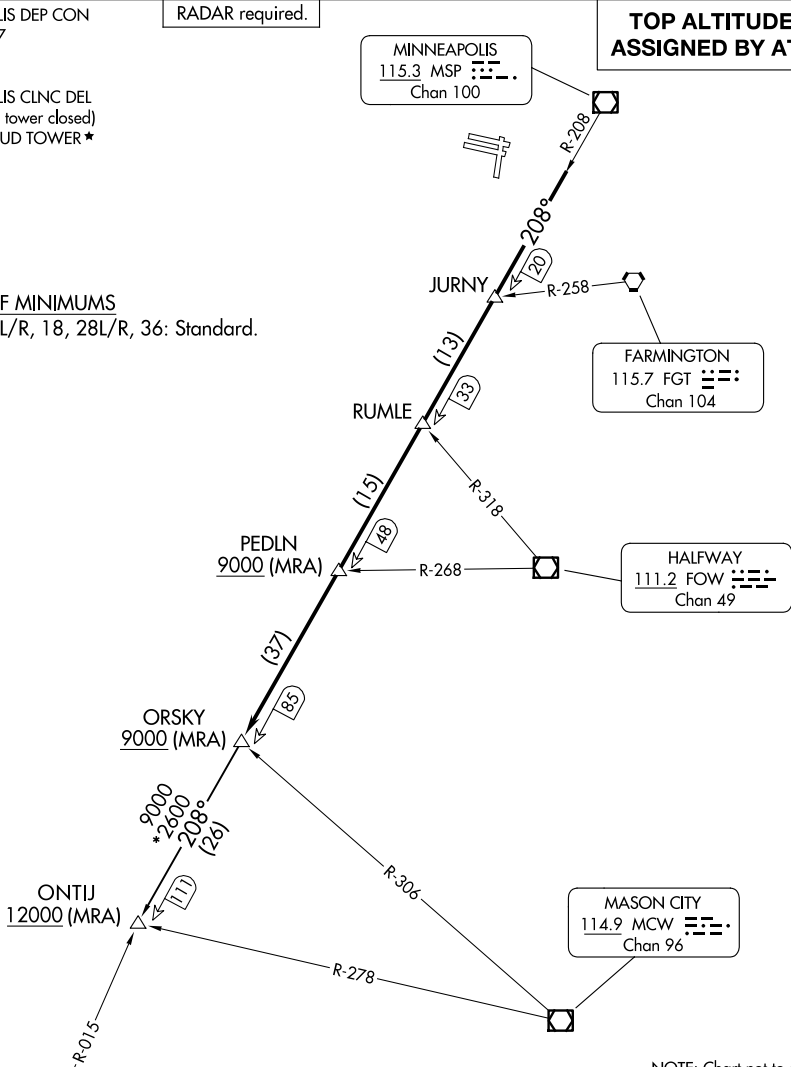
MINNEAPOLIS DEP CON  
134.7 284.7  
ATIS  
124.9  
MINNEAPOLIS CLNC DEL  
121.7 (when tower closed)  
FLYING CLOUD TOWER ★  
125.2 (N)  
119.15 (S)

RADAR required.

**TOP ALTITUDE:  
ASSIGNED BY ATC**

## TAKEOFF MINIMUMS

Rwys 10L/R, 18, 28L/R, 36: Standard.



NOTE: Chart not to scale.

**DEPARTURE ROUTE DESCRIPTION**

**TAKEOFF ALL RUNWAYS:** Climb on assigned heading for RADAR vectors to assigned fix on MSP R-208, then on depicted route to ORSKY, then on transition. Maintain ATC assigned altitude. Expect filed altitude 10 minutes after departure.

**ONTIJ TRANSITION (ORSKY3.ONTIJ):** From over ORSKY INT on MSP R-208 to ONTIJ INT.

# ORSKY THREE DEPARTURE (ORSKY3.ORSKY) 08SEP22

MINNEAPOLIS, MINNESOTA  
FLYING CLOUD (FCM)

NC-1, 11 JUN 2026 to 09 JUL 2026

NC-1, 11 JUN 2026 to 09 JUL 2026