

WAAS CH <b>90218</b> <b>W28B</b>	APP CRS <b>278°</b>	Rwy Ldg TDZE Apt Elev	<b>5001</b> <b>906</b> <b>906</b>
--	------------------------	-----------------------------	---

# RNAV (GPS) RWY 28L

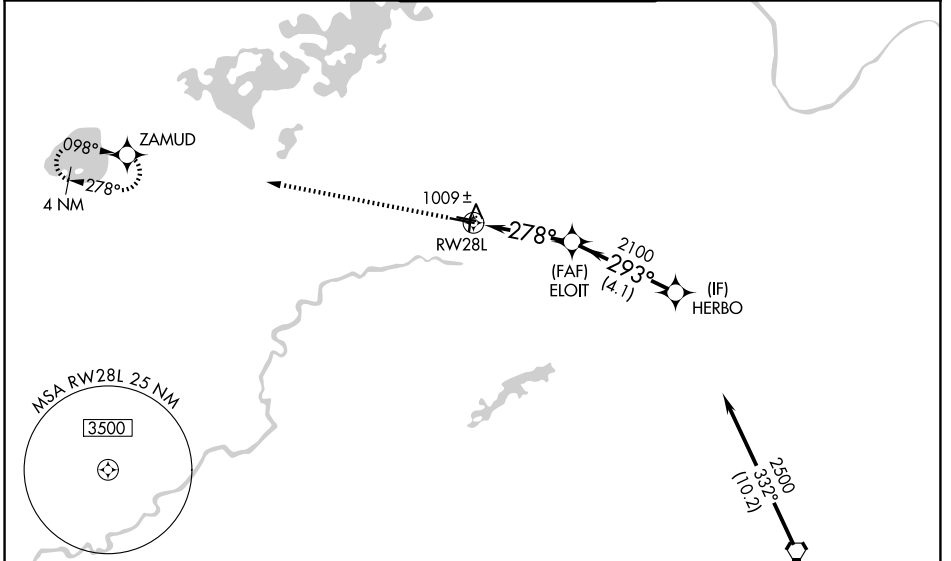
FLYING CLOUD (FCM)

RNP APCH.

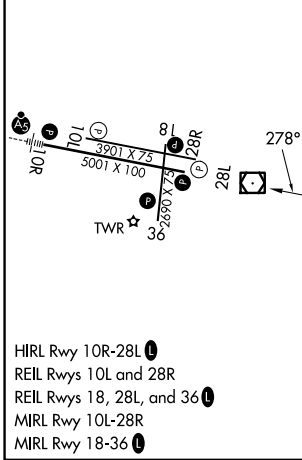
**⚠** For uncompensated Baro-VNAV systems, LNAV/VNAV NA below -16°C (2°F) or above 54°C (130°F). When local altimeter setting not received, use Minneapolis-St Paul Intl/Wald-Chamberlain altimeter setting and increase all DA 34 feet and all MDA 40 feet, increase LNAV Cats C and D visibility 1/8 mile. Helicopters visibility reduction below 3/4 SM NA. When Circling to Rwy 18, 36 at night, operational VGSI required, remain on or above VGSI glidepath until threshold.

MISSED APPROACH: Climb to 2700 direct ZAMUD and hold.

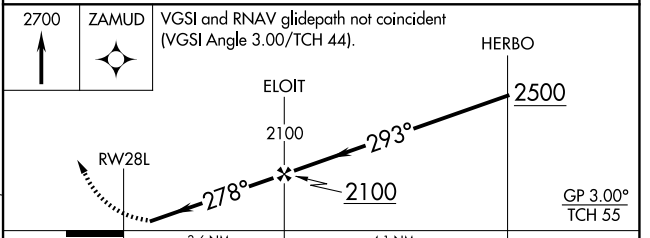
ATIS <b>124.9</b>	MINNEAPOLIS APP CON <b>134.7 284.7</b>	<b>FLYING CLOUD TOWER*</b> <b>125.2 (N)</b> <b>119.15 (S) (CTAF) 0</b>	GND CON <b>121.7</b>	UNICOM <b>122.95</b>
----------------------	---	--	-------------------------	-------------------------



ELEV 906	TDZE 906
----------	----------



Procedure NA for arrivals on FGT VORTAC airway radials 258 CW 011.



CATEGORY	A	B	C	D
LPV DA		1156-1	250 (300-1)	
LNAV/VNAV DA		1198-1	292 (300-1)	
LNAV MDA	1280-1	374 (400-1)	1280-1 1/8	374 (400-1 1/8)
CIRCLING	1320-1 414 (500-1)	1440-1 534 (600-1)	1440-1 1/2 534 (600-1 1/2)	1540-2 634 (700-2)

NC-1, 11 JUN 2026 to 09 JUL 2026

NC-1, 11 JUN 2026 to 09 JUL 2026