


VOR/DME FCM <b>117.7</b> Chan <b>124</b>	APP CRS <b>100°</b>	Rwy Ldg TDZE <b>906</b> Apt Elev <b>906</b>	<b>5001</b>
--	------------------------	--	-------------

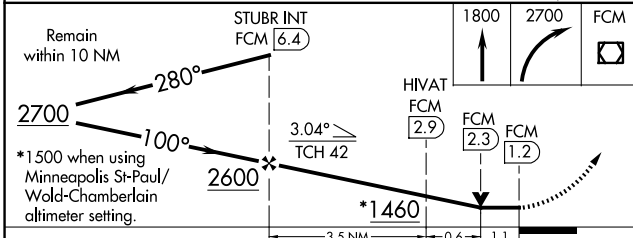
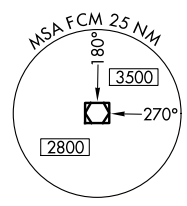
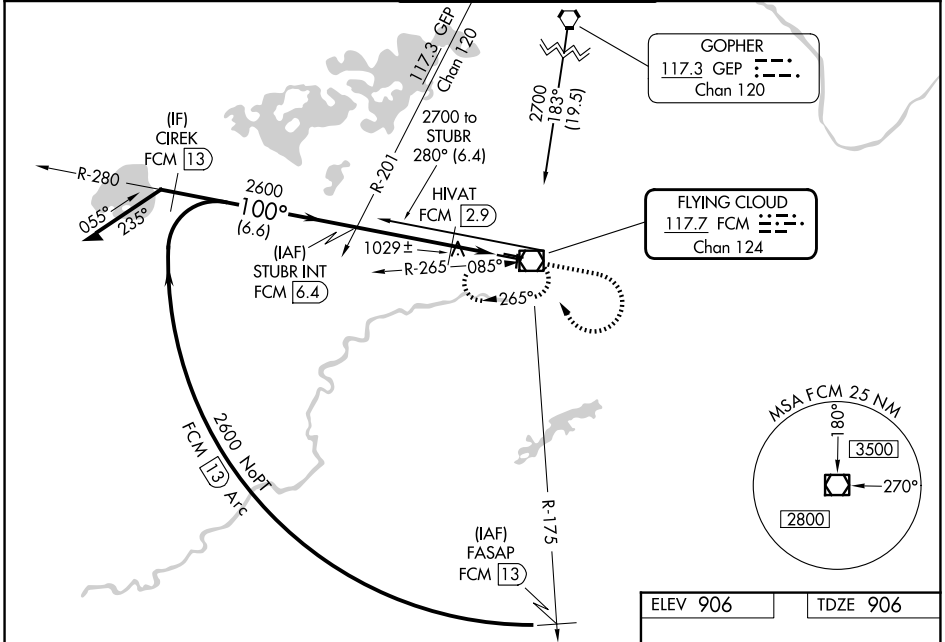
# VOR RWY 10R

FLYING CLOUD (FCM)

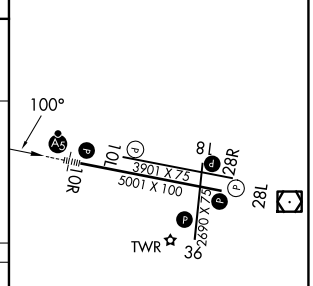
**⚠** When local altimeter setting not received, use Minneapolis St-Paul/Wald-Chamberlain altimeter setting and increase all MDA 40 feet, HIVAT fix minimums: Increase S-10R Cat C visibility ¼ mile. For inoperative MALSRS, HIVAT fix minimums: Increase S-10R Cat D visibility to 1 ¼ mile. VDP NA when using Minneapolis St-Paul/Wald-Chamberlain altimeter setting. When Circling to Rwy 18, 36 at night, operational VGSI required, remain on or above VGSI glidepath until threshold.

**MALSRS**  
  
**MISSED APPROACH:** Climb to 1800 then climbing right turn to 2700 direct FCM VOR/DME and hold, continue climb-in-hold to 2700.

ATIS <b>124.9</b>	MINNEAPOLIS APP CON <b>134.7 284.7</b>	FLYING CLOUD TOWER* <b>125.2 (N)</b> <b>119.15 (S) (CTAF)</b>	GND CON <b>121.7</b>	UNICOM <b>122.95</b>
----------------------	---	---	-------------------------	-------------------------



ELEV 906	TDZE 906
----------	----------



CATEGORY	A	B	C	D
S-10R	1460-½	554 (600-½)	1460-1	1460-1¼
CIRCLING	1460-1	554 (600-1)	1460-1½	1540-2
HIVAT FIX MINIMUMS (DME REQUIRED)				
S-10R	1280-½	374 (400-½)	1280-1	374 (400-1)
CIRCLING	1320-1	1440-1	1440-1½	1540-2
	414 (500-1)	534 (600-1)	534 (600-1½)	634 (700-2)

HIRL Rwy 10R-28L	Ⓚ
REIL Rwys 10L and 28R	
REIL Rwys 18, 28L, and 36	Ⓚ
MIRL Rwy 10L-28R	
MIRL Rwy 18-36	Ⓚ
FAF to MAP 5.2 NM	
Knots	60 90 120 150 180
Min:Sec	5:12 3:28 2:36 2:05 1:44

NC-1, 11 JUN 2026 to 09 JUL 2026

NC-1, 11 JUN 2026 to 09 JUL 2026