

VOR/DME FCM 117.7 Chan 124	APP CRS 035°	Rwy Ldg TDZE Apt Elev	2690 905 906
------------------------------------------------	------------------------	-----------------------------	-----------------------------------------

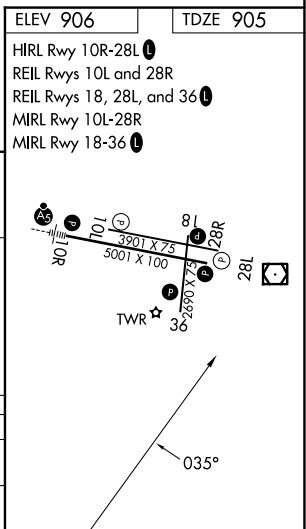
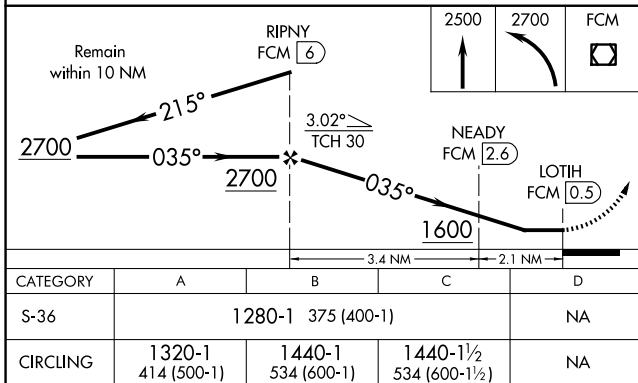
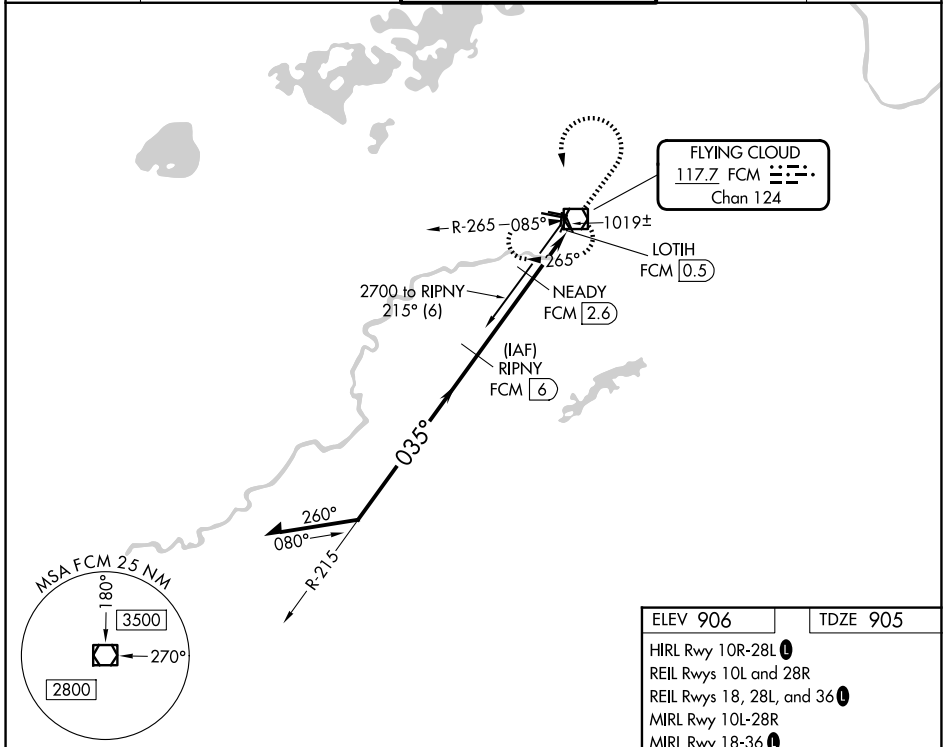
VOR/DME RWY 36

FLYING CLOUD (FCM)

⚠ When local altimeter setting not received, use Minneapolis St Paul Intl/ Wold Chamberlain altimeter setting and increase all MDA 40 feet and S-36 Cat C visibility 1/8 mile. Helicopter visibility reduction below 1 SM NA. Straight-in Rwy 36 at night, and Circling Rwy 18, 36 at night, operational VGSi required, remain on or above VGSi glidepath until threshold.

MISSED APPROACH: Climb to 2500 then climbing left turn to 2700 direct FCM VOR/DME and hold.

ATIS 124.9	MINNEAPOLIS APP CON 134.7 284.7	FLYING CLOUD TOWER ★ 125.2 (N) 119.15 (S) (CTAF) 0	GND CON 121.7	UNICOM 122.95
----------------------	-------------------------------------------	------------------------------------------------------------------------	-------------------------	-------------------------



NC-1, 11 JUN 2026 to 09 JUL 2026

NC-1, 11 JUN 2026 to 09 JUL 2026