

FORT POLK, LOUISIANA

# RNAV (GPS) RWY 34

WAAS CH <b>88848</b> <b>W34A</b>	APCH CRS <b>338°</b>	Rwy Igd TDZE Arprt Elev <b>4108</b> <b>321</b> <b>330</b>
--	-------------------------	--

[USA]

MAKS AAF (FORT POLK) (KPOE)

RNP APCH - GPS

RADAR required for arrivals at CATVO.

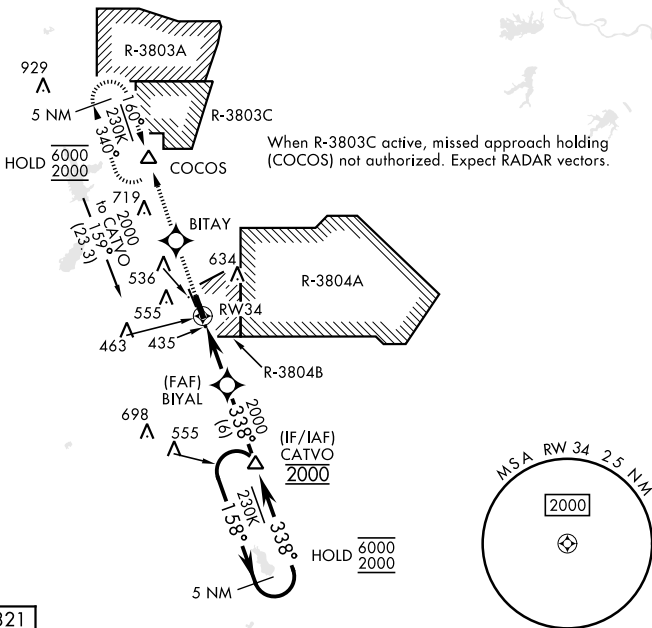
- ▼ \* When ALS inop, increase vis to 1 mile.
- \*\* When ALS inop, increase vis to 7/8 mile.
- \*\*\* When ALS inop, increase CAT AB vis to 1 mile, CAT CD vis to 1 1/4 miles.
- When control tower is closed, increase vis to 1 mile.



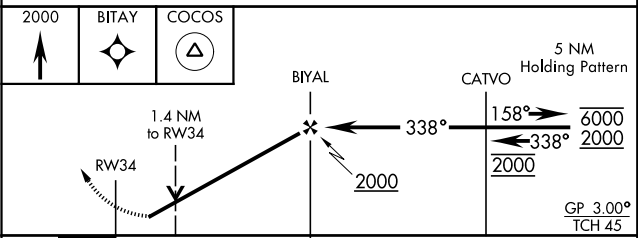
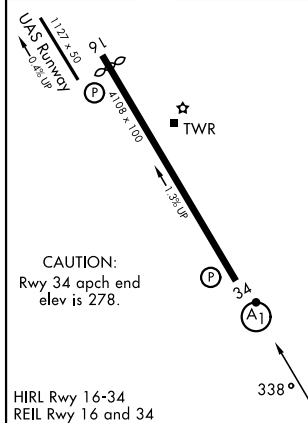
MISSED APPROACH: Climb to 2000 direct BITAY and on track 340° to COCOS and hold.

ATIS <b>134.85 282.2</b>	APP CON <b>123.7 261.3</b>	TOWER <b>41.5 119.0 (CTAF)</b> <b>257.75</b>	GND CON <b>121.8 239.25</b>	ASR/PAR
-----------------------------	-------------------------------	--	--------------------------------	---------

Rwy 34 helicopter visibility reduction below 3/4 mile not authorized.  
For uncompensated Baro-VNAV systems, LNAV/VNAV not authorized below -15°C or above 54°C.



ELEV	330	TDZE	321
------	-----	------	-----



CATEGORY	A	B	C	D
LPV DA *	668-3/4	347	[400-3/4]	
LNAV/VNAV DA**	594-3/4 273 (300-3/4)	605-3/4 284 (300-3/4)	613-3/4 292 (300-3/4)	624-3/4 303 (300-3/4)
LNAV MDA***	760-3/4		439	(500-3/4)
CIRCLING	880-1 550 (600-1)	880-1 1/2 550 (600-1 1/2)		940-2 610 (700-2)

FORT POLK, LOUISIANA  
Amdt 3 15MAY25

31° 03' N-93° 11' W

MAKS AAF (FORT POLK) (KPOE)

# RNAV (GPS) RWY 34

SC-4, 11 JUN 2026 to 09 JUL 2026

SC-4, 11 JUN 2026 to 09 JUL 2026