

SCRAM SIX DEPARTURE (RNAV)

TOP ALTITUDE:
3000

P-56B



P-56A



DEPARTURE ROUTE DESCRIPTION

TAKEOFF RWY 1L/C/R, 19L/C/R, 30: Climb on heading assigned by ATC, expect RADAR vectors to POOCH, then on track 240° to SCRAM, thence. . .

. . . .as depicted. Maintain 3000. Expect clearance to filed altitude within ten (10) minutes after departure.

GLANC TRANSITION (SCRAM6.GLANC):

D-ATIS

134.85

CLNC DEL

135.7 317.8

CPDLC

GND CON

121.9 317.8 (EAST)

121.625 348.6 (WEST)

DULLES TOWER

120.1 317.8 (Rwy 1R/19L)

120.25 348.6 (Rwy 1C/19C)

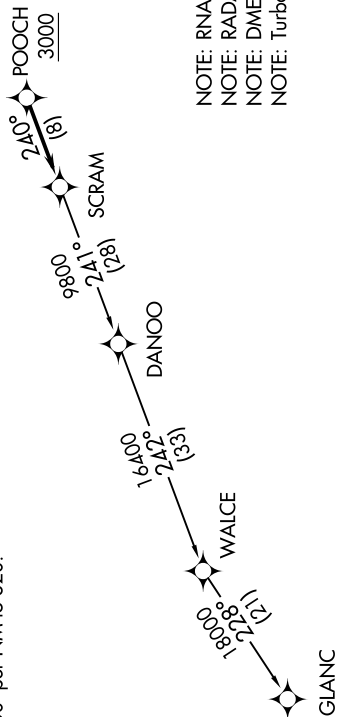
134.425 348.6 (Rwys 1L/19R, 12/30)

POTOMAC DEP CON

126.65 350.2

TAKEOFF MINIMUMS:

Rwys 1L/C/R, 19L/C/R, 30:
Standard with a minimum climb
of 500' per NM to 820.



- NOTE: RNAV 1.
- NOTE: RADAR required.
- NOTE: DME/DME/IRU or GPS required.
- NOTE: Turbo-jets only.

NOTE: Chart not to scale.

NE-3, 11 JUN 2026 to 09 JUL 2026

NE-3, 11 JUN 2026 to 09 JUL 2026