

(DARCY8.DARCY) 26078

DARCY EIGHT DEPARTURE (RNAV)

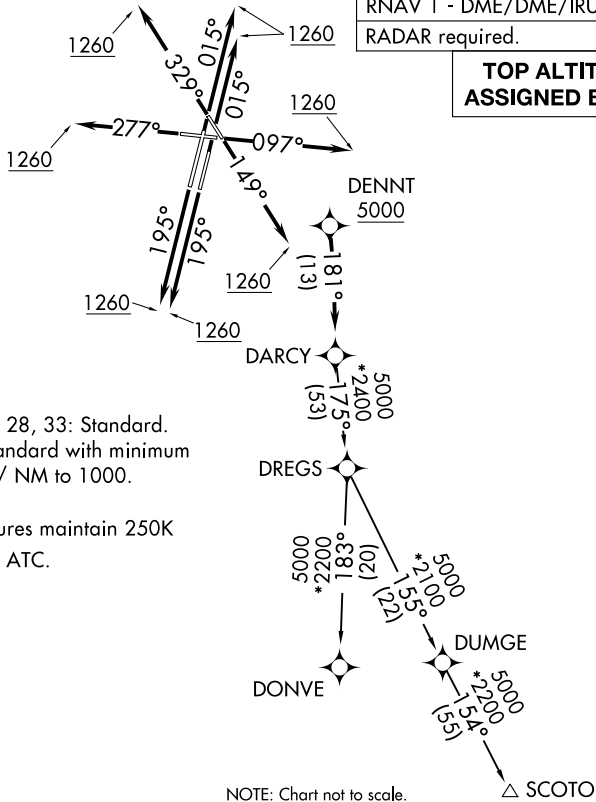
AL-5104 (FAA)

DUPAGE (DPA)
CHICAGO/WEST CHICAGO, ILLINOIS

CHICAGO DEP CON
133.5 349.0
ATIS
132.075
GND CON
121.8
DUPAGE TOWER
120.9 257.8

RNAV 1 - DME/DME/IRU or GPS.
RADAR required.

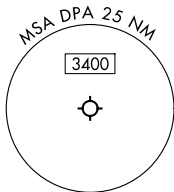
**TOP ALTITUDE:
ASSIGNED BY ATC**



TAKEOFF MINIMUMS:

Rwys 2L/R, 10, 20L/R, 28, 33: Standard.
Rwy 15: 300-1 $\frac{3}{8}$ or standard with minimum climb of 210'/NM to 1000.

NOTE: Turbojet departures maintain 250K until advised by ATC.



NOTE: Chart not to scale.

DEPARTURE ROUTE DESCRIPTION

TAKEOFF RUNWAYS 2L/R: Climb on heading 015° to 1260, for vectors to DENNT, thence

TAKEOFF RUNWAY 10: Climb on heading 097° to 1260, for vectors to DENNT, thence

TAKEOFF RUNWAY 15: Climb on heading 149° to 1260, for vectors to DENNT, thence

TAKEOFF RUNWAYS 20L/R: Climb on heading 195° to 1260, for vectors to DENNT, thence

TAKEOFF RUNWAY 28: Climb on heading 277° to 1260, for vectors to DENNT, thence

TAKEOFF RUNWAY 33: Climb on heading 329° to 1260, for vectors to DENNT, thence

. . . . on track 181° to DARC, then on transition, maintain ATC assigned altitude. Expect filed altitude 10 minutes after departure.

DONVE TRANSITION (DARCY8.DONVE):

SCOTO TRANSITION (DARCY8.SCOTO):

DARCY EIGHT DEPARTURE (RNAV)

(DARCY8.DARCY) 19MAR26

CHICAGO/WEST CHICAGO, ILLINOIS
DUPAGE (DPA)

EC-3, 11 JUN 2026 to 09 JUL 2026

EC-3, 11 JUN 2026 to 09 JUL 2026