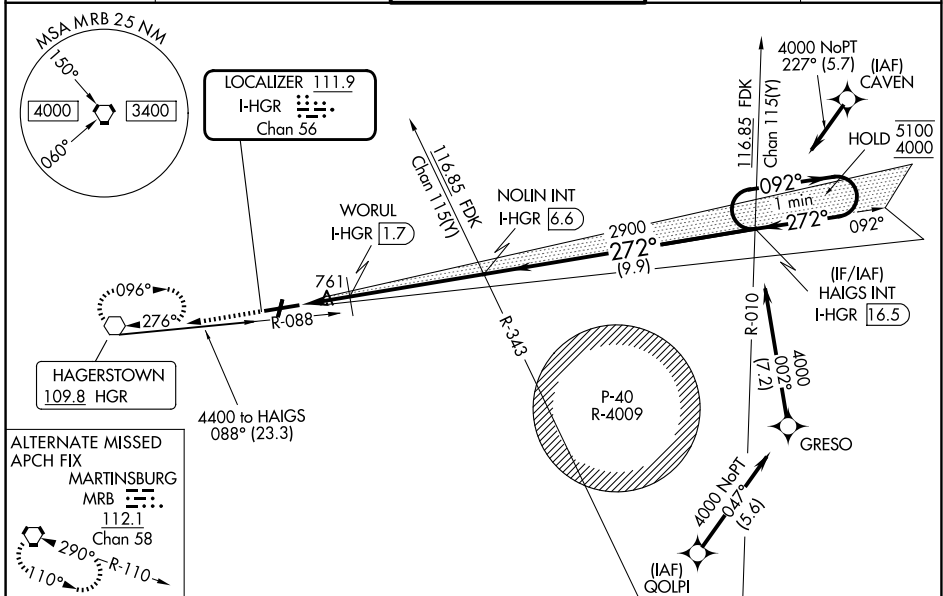


LOC/DME I-HGR 111.9 Chan 56	APP CRS 272°	Rwy Ldg 7000 TDZE 701 Apt Elev 703
---	------------------------	---

ILS or LOC RWY 27

HAGERSTOWN RGNL/RICHARD A HENSON FLD (HGR)

RNP APCH - GPS.		MALS	MISSED APPROACH: Climb to 4000 direct HGR VOR and hold, continue climb-in-hold to 4000.	
ASOS 126.375	POTOMAC APP CON 126.825 239.025	HAGERSTOWN TOWER ★ 120.3 (CTAF) 225.4	GND CON 120.8	UNICOM 122.95



ELEV 703	D	TDZE 701	4000	HGR	HAIGS INT I-HGR 16.5	One Minute Holding Pattern																																			
REIL Rwy 2 and 20 REIL Rwy 9 MIRL Rwy 2-20 HIRL Rwy 9-27 FAF to MAP 6.8 NM		<table border="1"> <thead> <tr> <th>CATEGORY</th> <th>A</th> <th>B</th> <th>C</th> <th>D</th> </tr> </thead> <tbody> <tr> <td>S-ILS 27</td> <td colspan="4">901-½ 200 (200-½)</td> </tr> <tr> <td>S-LOC 27</td> <td>1320-½ 619 (700-½)</td> <td></td> <td>1320-1¾ 619 (700-1¾)</td> <td></td> </tr> <tr> <td>CIRCLING</td> <td>1320-1 617 (700-1)</td> <td></td> <td>1320-1¾ 617 (700-1¾)</td> <td>1320-2 617 (700-2)</td> </tr> <tr> <td colspan="5" style="text-align:center">WORUL FIX MINIMUMS</td> </tr> <tr> <td>S-LOC 27</td> <td colspan="4">1040-½ 339 (400-½)</td> </tr> <tr> <td>CIRCLING</td> <td>1160-1 457 (500-1)</td> <td></td> <td>1200-1½ 497 (500-1½)</td> <td>1300-2 597 (600-2)</td> </tr> </tbody> </table>					CATEGORY	A	B	C	D	S-ILS 27	901-½ 200 (200-½)				S-LOC 27	1320-½ 619 (700-½)		1320-1¾ 619 (700-1¾)		CIRCLING	1320-1 617 (700-1)		1320-1¾ 617 (700-1¾)	1320-2 617 (700-2)	WORUL FIX MINIMUMS					S-LOC 27	1040-½ 339 (400-½)				CIRCLING	1160-1 457 (500-1)		1200-1½ 497 (500-1½)	1300-2 597 (600-2)
CATEGORY	A	B	C	D																																					
S-ILS 27	901-½ 200 (200-½)																																								
S-LOC 27	1320-½ 619 (700-½)		1320-1¾ 619 (700-1¾)																																						
CIRCLING	1320-1 617 (700-1)		1320-1¾ 617 (700-1¾)	1320-2 617 (700-2)																																					
WORUL FIX MINIMUMS																																									
S-LOC 27	1040-½ 339 (400-½)																																								
CIRCLING	1160-1 457 (500-1)		1200-1½ 497 (500-1½)	1300-2 597 (600-2)																																					
Knots: 60 90 120 150 180 Min:Sec: 6:48 4:32 3:24 2:43 2:16		GS 3.00° TCH 55																																							

NE-3, 11 JUN 2026 to 09 JUL 2026

NE-3, 11 JUN 2026 to 09 JUL 2026