

LOC/DME I-UYK <b>111.9</b> Chan <b>56</b>	APP CRS <b>092°</b>	Rwy Ldg <b>7000</b> TDZE <b>695</b> Apt Elev <b>703</b>
---	------------------------	---

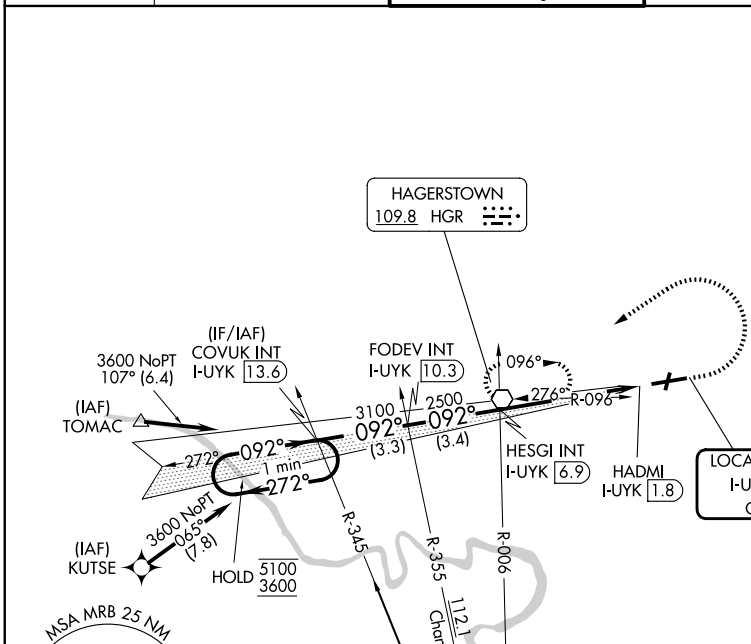
# ILS or LOC RWY 9

HAGERSTOWN RGNL/RICHARD A HENSON FLD (HGR)

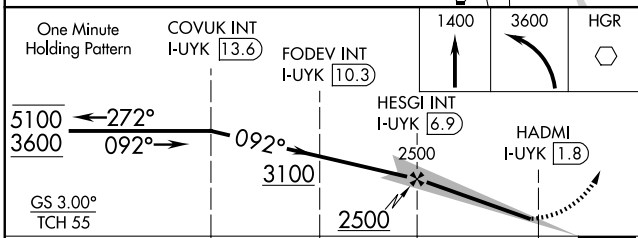
RNP APCH - GPS.	MISSED APPROACH: Climb to 1400 then climbing left turn to 3600 direct HGR VOR and hold, continue climb-in-hold to 3600.			
-----------------	---	--	--	--

ASOS <b>126.375</b>	POTOMAC APP CON <b>126.825 239.025</b>	HAGERSTOWN TOWER * <b>120.3 (CTAF) 225.4</b>	GND CON <b>120.8</b>	UNICOM <b>122.95</b>
------------------------	---	---	-------------------------	-------------------------

ALTERNATE MISSED APCH FIX  
MARTINSBURG  
MRB 112.1 Chan 58

 110° 290° R-110

ELEV 703	<b>D</b> TDZE 695
----------	-------------------



REIL Rwy 2 and 20  
REIL Rwy 9 **1**  
MIRL Rwy 2-20  
HIRL Rwy 9-27 **1**

FAF to MAP 5.1 NM

Knots	60	90	120	150	180
Min:Seq	5:06	3:24	2:33	2:02	1:42

CATEGORY	A	B	C	D
S-ILS 9	895-3/4 200 (200-3/4)			
S-LOC 9	1000-1	305 (300-1)	1000-7/8	305 (300-7/8)
CIRCLING	1160-1	457 (500-1)	1200-1 1/2	1300-2
			497 (500-1 1/2)	597 (600-2)

# ILS or LOC RWY 9

NE-3, 11 JUN 2026 to 09 JUL 2026

NE-3, 11 JUN 2026 to 09 JUL 2026