

WAAS CH <b>86911</b> <b>W27A</b>	APP CRS <b>272°</b>	Rwy Ldg TDZE Apt Elev	<b>7000</b> <b>701</b> <b>703</b>
--	------------------------	-----------------------------	---

# RNAV (GPS) RWY 27

HAGERSTOWN RGNL/RICHARD A HENSON FLD (HGR)

RNP APCH - GPS.

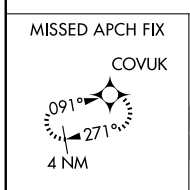
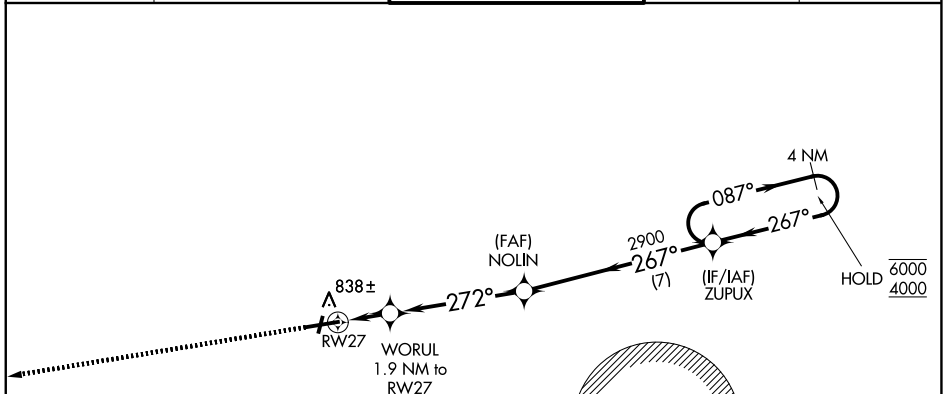
**⚠** For uncompensated Baro-VNAV systems, LNAV/VNAV NA below -13°C or above 54°C.

MALSR

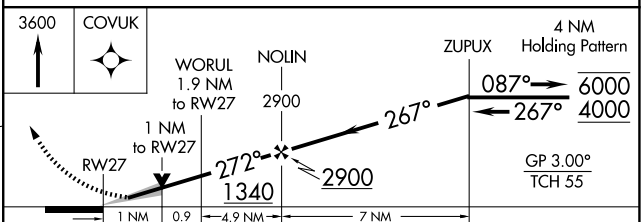
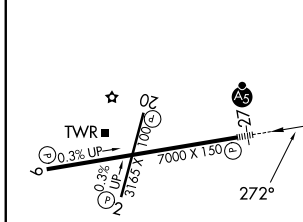


MISSED APPROACH: Climb to 3600 direct COVUK and hold, continue climb-in-hold to 3600.

ASOS <b>126.375</b>	POTOMAC APP CON <b>126.825 239.025</b>	HAGERSTOWN TOWER * <b>120.3 (CTAF) 0 225.4</b>	GND CON <b>120.8</b>	UNICOM <b>122.95</b>
------------------------	---	---	-------------------------	-------------------------



ELEV 703	<b>D</b>	TDZE 701
----------	----------	----------



CATEGORY	A	B	C	D
LPV DA		901-1/2	200 (200-1/2)	
LNAV/VNAV DA		986-1/2	285 (300-1/2)	
LNAV MDA	1060-1/2	359 (400-1/2)	1060-5/8	359 (400-5/8)
CIRCLING	1160-1	457 (500-1)	1200-1 1/2 497 (500-1 1/2)	1300-2 597 (600-2)

REIL Rwy 2 and 20  
REIL Rwy 9 **Ⓛ**  
MIRL Rwy 2-20  
HIRL Rwy 9-27 **Ⓛ**

NE-3, 11 JUN 2026 to 09 JUL 2026

NE-3, 11 JUN 2026 to 09 JUL 2026