

WAAS CH <b>53516</b> <b>W22A</b>	APP CRS <b>219°</b>	Rwy Ldg TDZE Apt Elev	<b>6184</b> <b>666</b> <b>674</b>
--	------------------------	-----------------------------	---

# RNAV (GPS) RWY 22

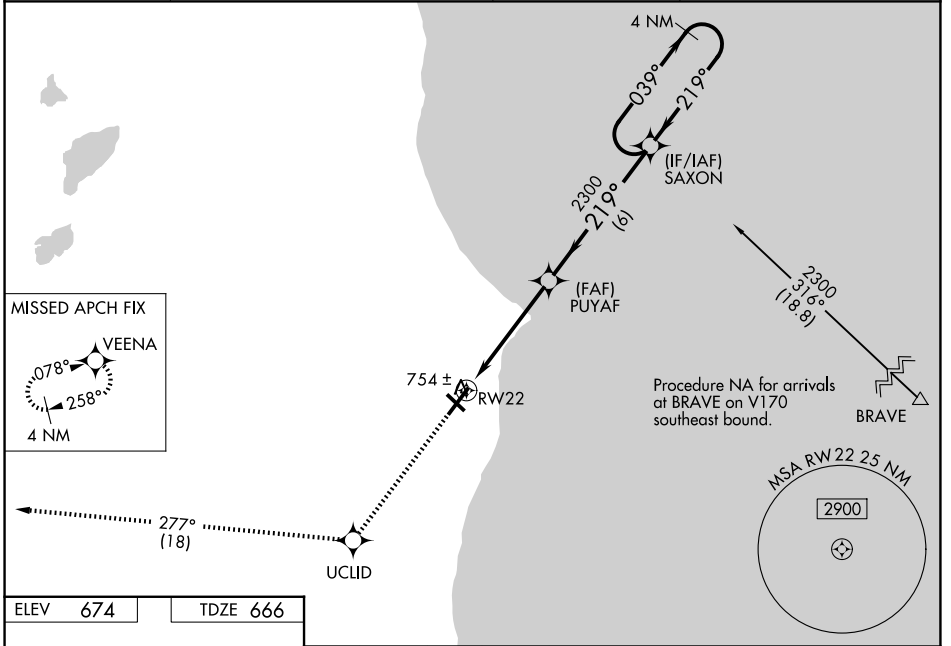
BATTEN INTL (RAC)

RNP APCH - GPS.

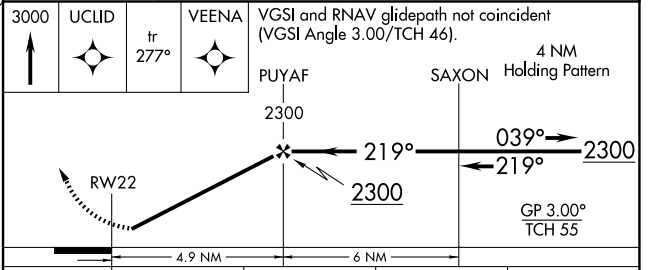
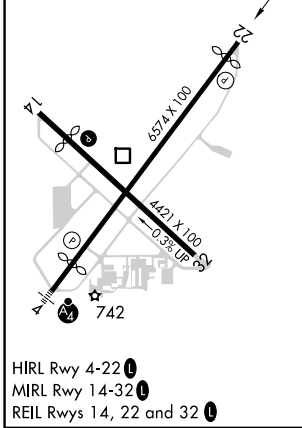
**⚠** For uncompensated Baro-VNAV systems, LNAV/VNAV NA below -19°C or above 54°C. When local altimeter setting not received, use MKE altimeter setting and increase LPV DA to 984 feet; increase LNAV/VNAV DA to 1032 feet; increase all MDAs 40 feet and LNAV visibility Cat C/D ¼ SM, and Circling visibility Cat C/D ¼ SM. Circling Rwy 14, 22, 32 NA at night. Rwy 22 helicopter visibility reduction below 1 SM NA. Baro-VNAV NA when using MKE altimeter setting. Straight-in Rwy 22 NA at night.

**MISSED APPROACH:**  
Climb to 3000 direct UCLID and track 277° to VEENA and hold.

ASOS <b>121.425</b>	MILWAUKEE APP CON <b>135,875 317.725</b>	CLNC DEL <b>120.15</b>	UNICOM <b>123.075 (CTAF) 0</b>
------------------------	---	---------------------------	-----------------------------------



ELEV 674	TDZE 666
----------	----------



CATEGORY	A	B	C	D
LPV DA		949-1	283 (300-1)	
LNAV/VNAV DA		997-1	331 (400-1)	
LNAV MDA	1080-1	414 (500-1)	1080-1½	414 (500-1½)
CIRCLING	1140-1 466 (500-1)	1160-1 486 (500-1)	1380-2 706 (800-2)	1380-2¼ 706 (800-2¼)

EC-3, 11 JUN 2026 to 09 JUL 2026

EC-3, 11 JUN 2026 to 09 JUL 2026