

| | | |
|-------------|----------|-------------|
| APP CRS | Rwy Ldg | 4421 |
| 315° | TDZE | 667 |
| | Apt Elev | 674 |

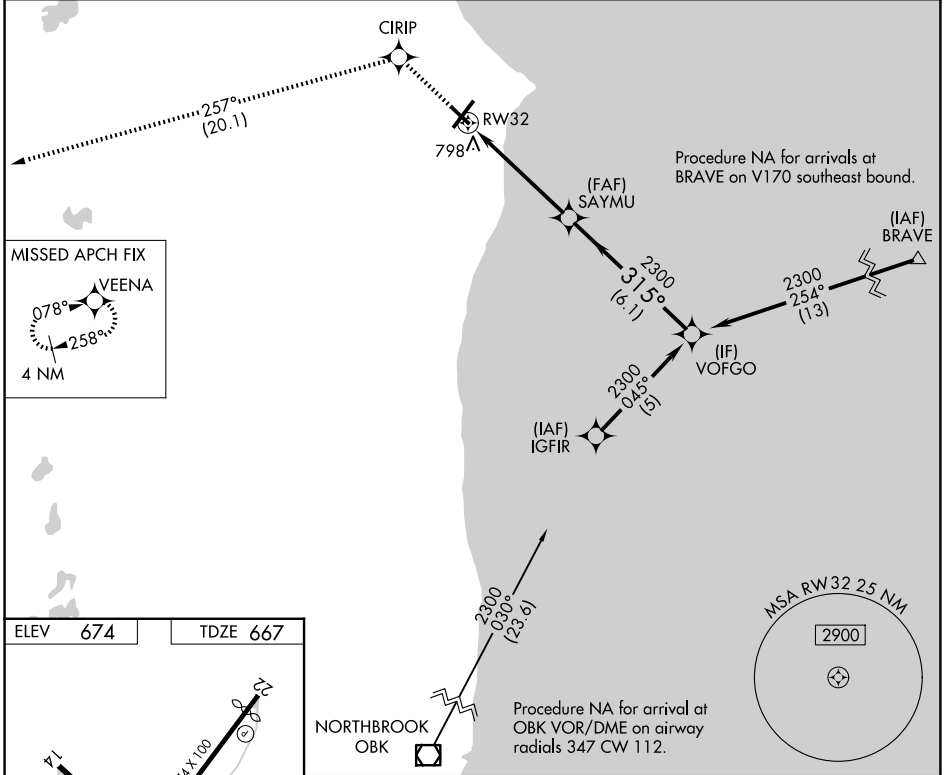
RNAV (GPS) RWY 32

BATTEN INTL (RAC)

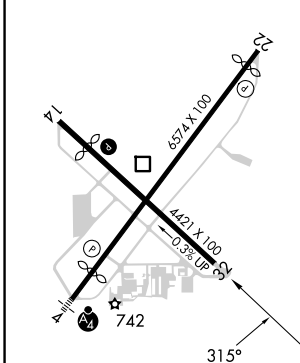
⚠ DME/DME RNP-0.3 NA. VDP NA when using General Mitchell Intl altimeter setting.
⚠ When local altimeter setting not received, use General Mitchell Intl altimeter setting: Increase all MDA 40 feet and visibility Cat C and D ¼ SM. Rwy 32 helicopter visibility reduction below ¾ SM NA. Circling Rwy 14 NA at night.

MISSED APPROACH: Climb to 3000 direct CIRIP and track 257° to VEENA and hold.

| | | | |
|------------------------|---|---------------------------|-----------------------------------|
| ASOS 121.425 | MILWAUKEE APP CON 135.875 317.725 | CLNC DEL 120.15 | UNICOM 123.075 (CTAF) 0 |
|------------------------|---|---------------------------|-----------------------------------|



| | |
|----------|----------|
| ELEV 674 | TDZE 667 |
|----------|----------|



| | | | | |
|----------|-----------------------|-----------------------|-----------------------|-------------------------|
| 3000 | CIRIP | VEENA | SAYMU | VOFGO |
| ↑ | ⬠ 257° | ⬠ | | |
| | 1.1 NM to RW32 | | 1.1 NM | 3.9 NM |
| | | ≤ 3.04° TCH 40 | 315° | 2300 |
| | 1.1 NM | 3.9 NM | 6.1 NM | |
| CATEGORY | A | B | C | D |
| LNAV MDA | 1060-1 | 393 (400-1) | 1060-1½ | 393 (400-1½) |
| CIRCLING | 1140-1 466 (500-1) | 1160-1 486 (500-1) | 1380-2 706 (800-2) | 1380-2¼ 706 (800-2¼) |

HIRL Rwy 4-22 **0**
 MIRL Rwy 14-32 **0**
 REIL Rwy 14, 22 and 32 **0**

EC-3, 11 JUN 2026 to 09 JUL 2026

EC-3, 11 JUN 2026 to 09 JUL 2026