

WAAS CH <b>78029</b> <b>W18A</b>	APP CRS <b>185°</b>	Rwy Ldg TDZE <b>777</b> Apt Elev <b>777</b>	<b>5264</b>
--	------------------------	---	-------------

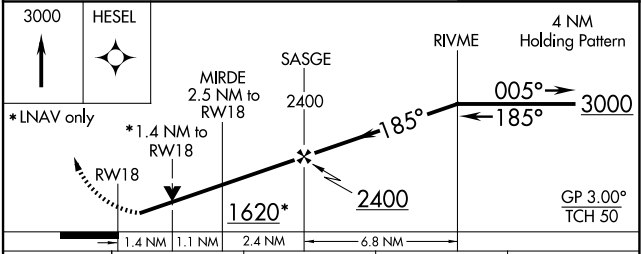
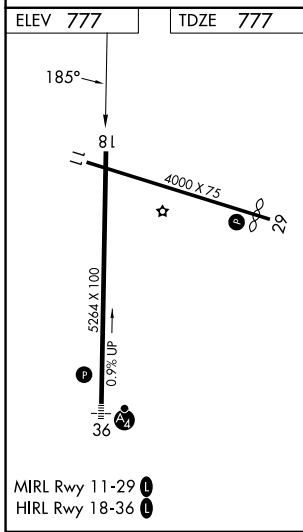
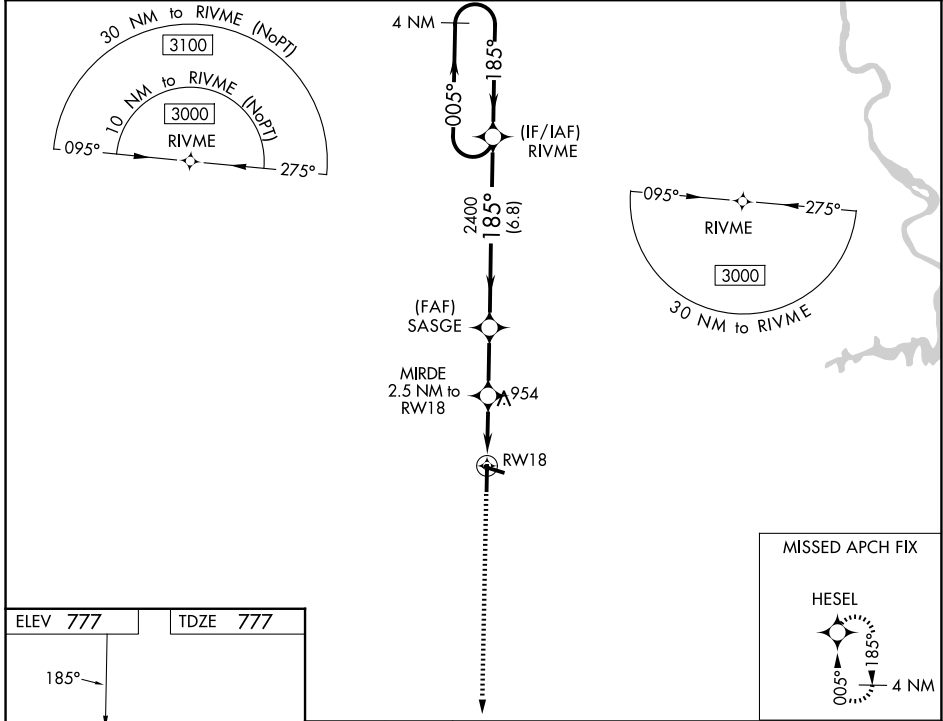
# RNAV (GPS) RWY 18

AUBURN UNIVERSITY RGNL (AUO)

▼ For uncompensated Baro-VNAV systems, LNAV/VNAV NA below -16°C (4°F) or above 54°C (130°F).  
 ▲ Baro-VNAV and VDP NA when using Columbus altimeter setting. DME/DME RNP-0.3 NA. Rwy 18 helicopter visibility reduction below 3/4 SM not authorized. When local altimeter setting not received, use Columbus altimeter setting: increase LPV DA to 1140 feet and visibility all Cats 1/2 SM; increase LNAV/VNAV DA to 1164 feet and visibility all Cats 3/8 SM; increase all MDA 120 feet and LNAV Cats C/D visibility 3/8 SM, Circling Cat C visibility 1/4 SM, and circling Cat D visibility 1/2 SM.

MISSED APPROACH: Climb to 3000 direct HESEL and hold.

AWOS-3PT <b>132.575</b>	ATLANTA APP CON ★ <b>125.5 323.1</b>	AUBURN TOWER ★ <b>123.875 (CTAF) 0</b>	GND CON ★ <b>121.625</b>	UNICOM <b>123.0</b>
----------------------------	---	---	-----------------------------	------------------------



CATEGORY	A	B	C	D
LPV DA		1027-3/4	250 (300-3/4)	
LNAV/VNAV DA		1051-7/8	274 (300-7/8)	
LNAV MDA	1260-1	483 (500-1)	1260-1 3/8	483 (500-1 3/8)
CIRCLING	1280-1 503 (600-1)	1360-1 583 (600-1)	1380-1 3/4 603 (700-1 3/4)	1480-2 1/4 703 (800-2 1/4)

SE-4, 11 JUN 2026 to 09 JUL 2026

SE-4, 11 JUN 2026 to 09 JUL 2026