

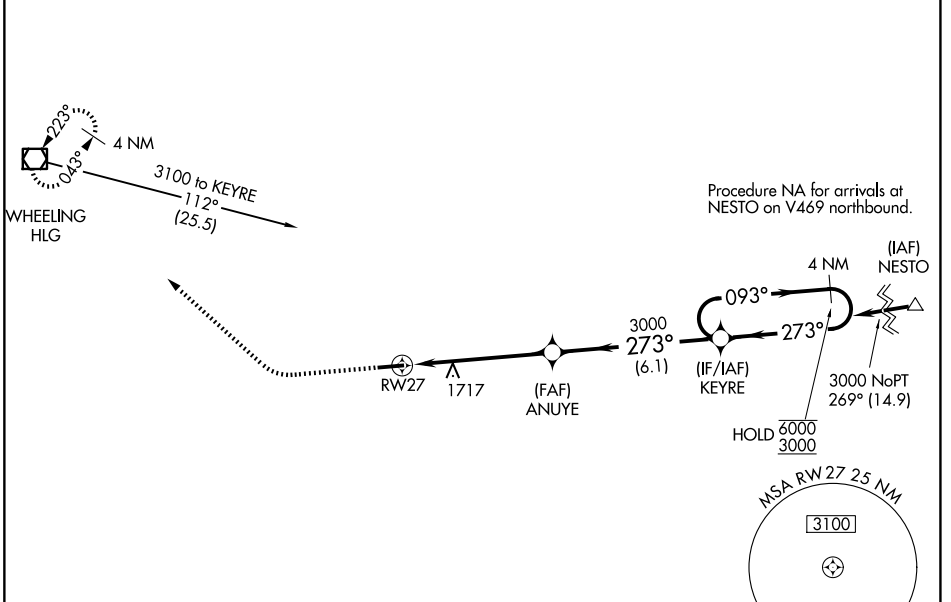
WAAS CH 90107 W27A	APP CRS 273°	Rwy Ldg TDZE Apt Elev	5004 1184 1184
--	------------------------	-----------------------------	---

RNAV (GPS) RWY 27

WASHINGTON COUNTY (A.FJ)

RNP APCH-GPS.	MISSED APPROACH: Climb to 1700 then climbing right turn to 3300 direct HLG VOR/DME and hold.
<p>▼ Circling NA for Cat D N of Rwy 9-27. Rwy 27 helicopter visibility reduction below ¾ SM NA.</p> <p>▲ For uncompensated Baro-VNAV systems, LNAV/VNAV NA below -17°C or above 54°C. Circling Rwy 9 NA at night.</p>	

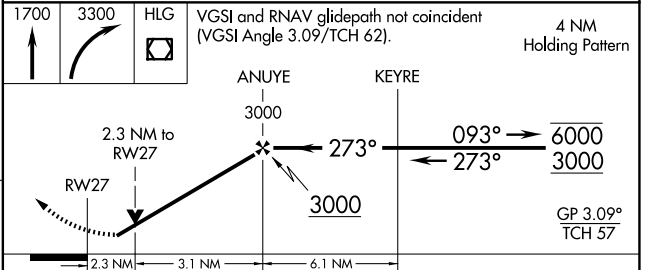
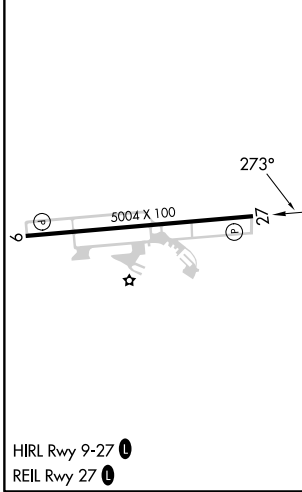
AWOS-3PT 119.175	PITTSBURGH APP CON 119.35 285.575	CLNC DEL 127.3	UNICOM 122.975 (CTAF)
----------------------------	---	--------------------------	---------------------------------



NE-4, 11 JUN 2026 to 09 JUL 2026

NE-4, 11 JUN 2026 to 09 JUL 2026

ELEV 1184	TDZE 1184
-----------	-----------



CATEGORY	A	B	C	D
LPV DA		1386-¾	202 (300-¾)	
LNAV/VNAV DA		2140-4	956 (1000-4)	
LNAV MDA	1980-1 796 (800-1)	1980-1¼ 796 (800-1¼)	1980-2½ 796 (800-2½)	796 (800-2½)
CIRCLING	1980-1 796 (800-1)	2020-1¼ 836 (900-1¼)	2020-2½ 836 (900-2½)	2040-2¾ 856 (900-2¾)