

WAAS CH 48911 W13A	APP CRS 128°	Rwy Ldg TDZE Apt Elev	4500 1885 1915
--	------------------------	-----------------------------	---

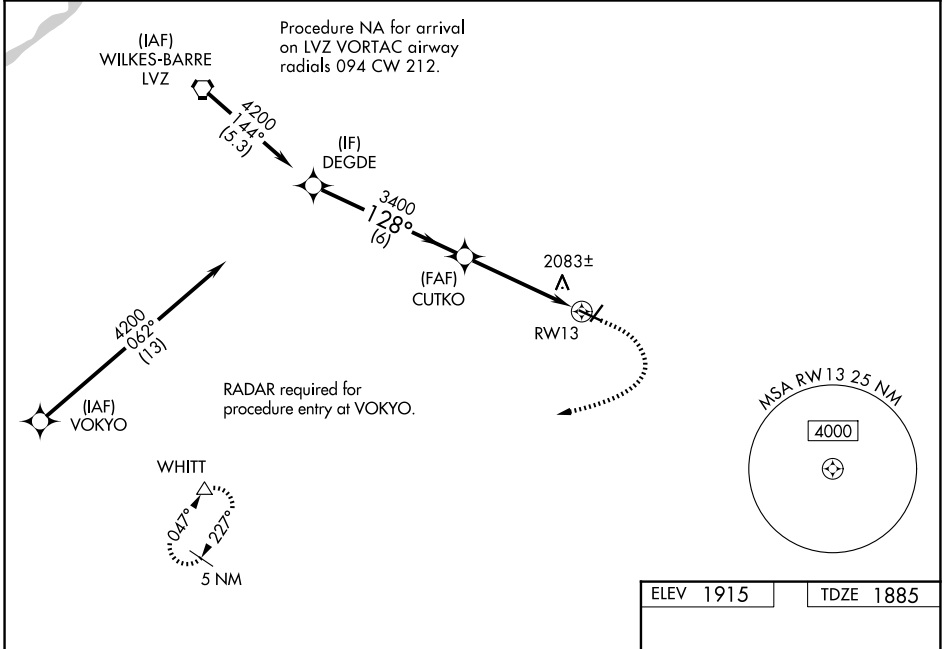
RNAV (GPS) RWY 13

POCONO MOUNTAINS RGNL (MPO)

▼ For uncompensated Baro-VNAV systems, LNAV/VNAV NA below -18° C (0° F) or above 54° C (130° F).
▲ Baro-VNAV and VDP NA when using Wilkes-Barre/Scranton altimeter setting. Rwy 13 helicopter visibility reduction below 3/4 SM NA. DME/DME RNP-0.3 NA. When local altimeter setting not received, use Wilkes-Barre/Scranton altimeter setting: increase LPV DA to 2450 feet, LNAV/VNAV DA to 2537 feet and all visibilities 1/2 SM; increase all MDAs 180 feet and visibility LNAV Cat C/D 3/8 SM and Circling Cat C/D 1/2 SM. Circling Rwy 23 NA at night.

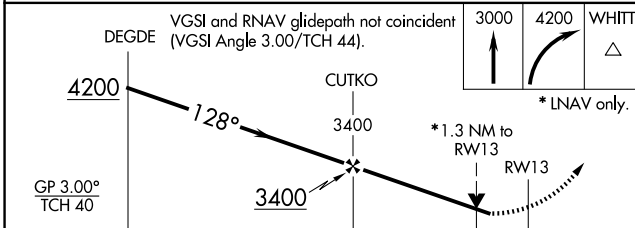
MISSED APPROACH:
 Climb to 3000 then climbing right turn to 4200 direct WHITT and hold.

ASOS 120.275	WILKES-BARRE APP CON 126.3 256.7	CLNC DEL 125.3	UNICOM 122.7 (CTAF) 0
------------------------	--	--------------------------	---------------------------------



NE-4, 11 JUN 2026 to 09 JUL 2026

NE-4, 11 JUN 2026 to 09 JUL 2026



CATEGORY	A	B	C	D
LPV DA		2271-1 1/4	386 (400-1 1/4)	
LNAV/VNAV DA		2358-1 1/2	473 (500-1 1/2)	
LNAV MDA	2340-1	455 (500-1)	2340-1 3/8	455 (500-1 3/8)
CIRCLING	2420-1 505 (600-1)	2500-1 585 (600-1)	2600-2 685 (700-2)	2660-2 1/2 745 (800-2 1/2)

