

COCOA BEACH, FLORIDA

TACAN-A

TACAN Chan	COF	APCH CRS	Rwy Idg TDZE	9999
97		017°	N/A	
			Arprt Elev	10

[USAF]

CAPE CANAVERAL SFS SKID STRIP (KXMR)

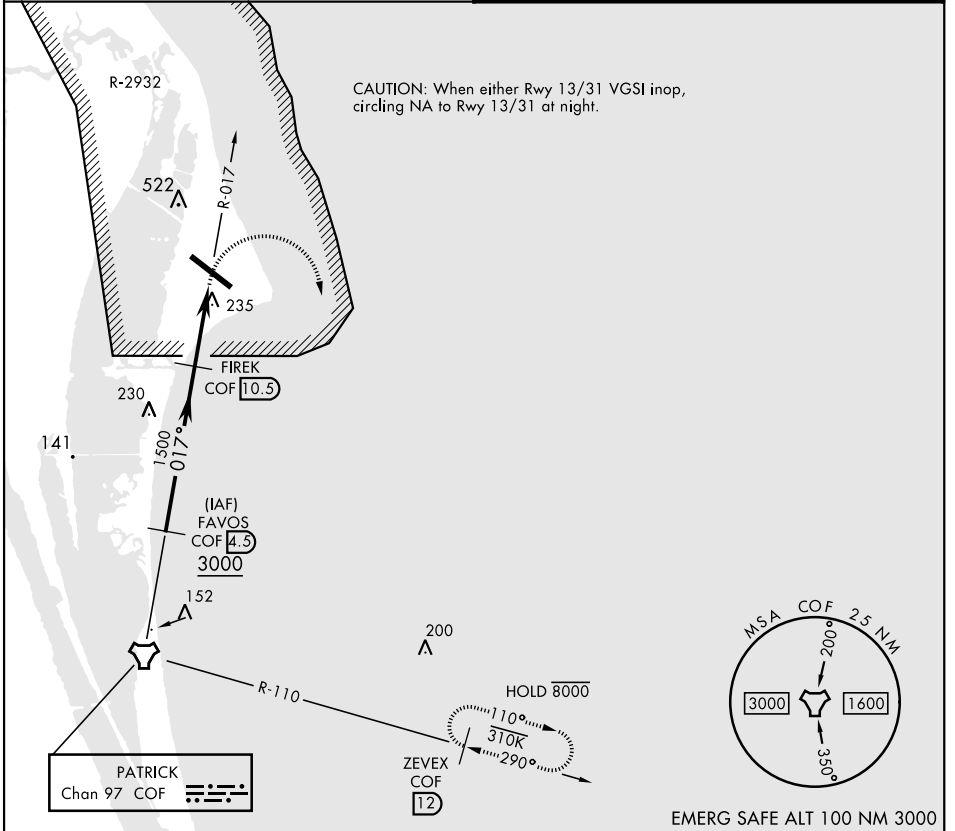
RADAR required

▼ * Circling not authorized N of Rwy 13-31.

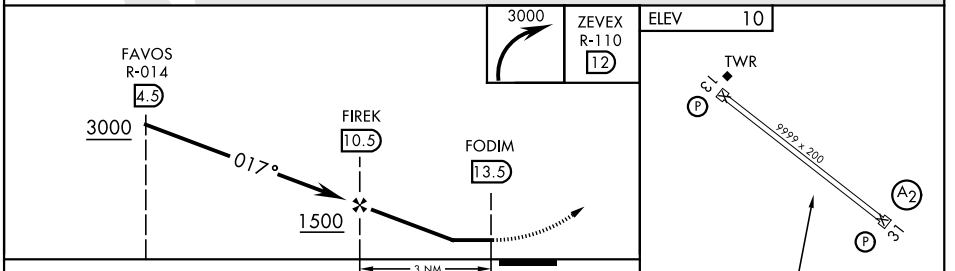
MISSED APPROACH: Turn right direct ZEVEX (COF R-110/12 DME) maintain 3000 and hold.

ORLANDO APP CON
134.95 281.425

CAPE TOWER ★
118.625 143.15 239.05



EMERG SAFE ALT 100 NM 3000



CATEGORY	A	B	C	D	E
CIRCLING *	580-1 570 (600-1)		580-1½ 570 (600-1½)	620-2 610 (700-2)	640-2¼ 630 (700-2¼)

HIRL Rwy 13-31

COCOA BEACH, FLORIDA
Amdt 2 13JUN24

28°28'N-80°34'W

CAPE CANAVERAL SFS SKID STRIP (KXMR)

TACAN-A

SE-3, 11 JUN 2026 to 09 JUL 2026

SE-3, 11 JUN 2026 to 09 JUL 2026