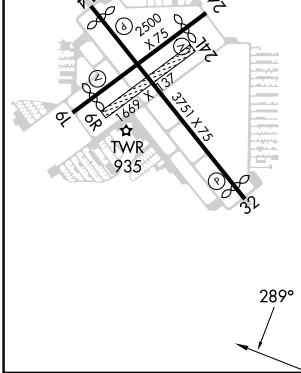
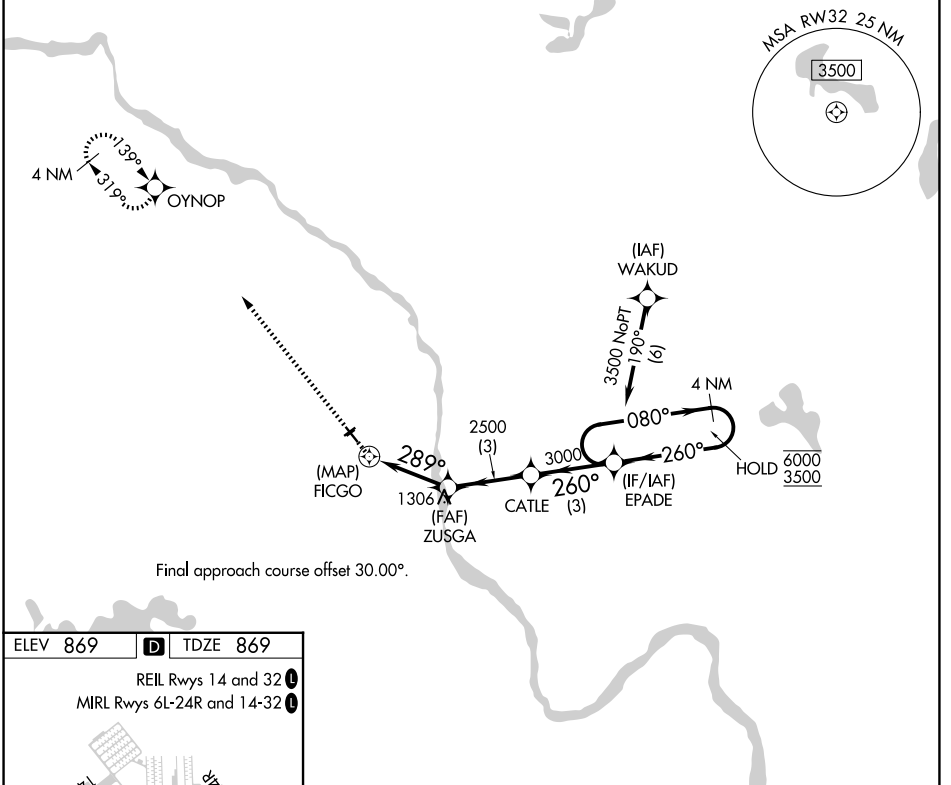


APP CRS	Rwy Ldg	<b>3509</b>
<b>289°</b>	TDZE	<b>869</b>
	Apt Elev	<b>869</b>

# RNAV (GPS) RWY 32

CRYSTAL (MIC)

RNP APCH.		MISSED APPROACH: Climb to 3000 direct OYNOP and hold.						
<p><b>▼</b> Circling NA to Rwys 6R and 24L.</p> <p><b>▲</b> Rwy 32 helicopter visibility reduction below 3/4 SM NA.</p>		ATIS	MINNEAPOLIS APP CON	CRYSTAL TOWER ★	GND CON	CLNC DEL	CLNC DEL	UNICOM
		<b>124.475</b>	<b>126.5 335.65</b>	<b>120.7 (CTAF) 0</b>	<b>121.6</b>	<b>121.6</b>	<b>121.6</b> (When twr closed)	<b>122.95</b>



ELEV 869	<b>D</b> TDZE 869
REIL Rwy 14 and 32	
MIRL Rwy 6L-24R and 14-32	
<p>3000 OYNOP</p> <p>ZUSGA</p> <p>CATLE</p> <p>EPADE 4 NM Holding Pattern</p> <p>FICGO</p> <p>≤ 4.00° TCH 35</p> <p>289°</p> <p>2500</p> <p>3000</p> <p>260°</p> <p>080° → 6000</p> <p>← 260° 3500</p> <p>0.8 3 NM 3 NM 3 NM</p>	
CATEGORY	A B C D
LNAV MDA	1380-1 511 (600-1) NA
CIRCLING	1380-1 511 (600-1) NA

NC-1, 11 JUN 2026 to 09 JUL 2026

NC-1, 11 JUN 2026 to 09 JUL 2026