

|  |                        |   |
|--|------------------------|---|
| WAAS<br>CH <b>69222</b><br><b>W13A</b> | APP CRS<br><b>130°</b> | Rwy Ldg<br>TDZE <b>1354</b><br>Apt Elev <b>1354</b> |
|--|------------------------|---|

# RNAV (GPS) RWY 13

RANGE RGNL (HIB)

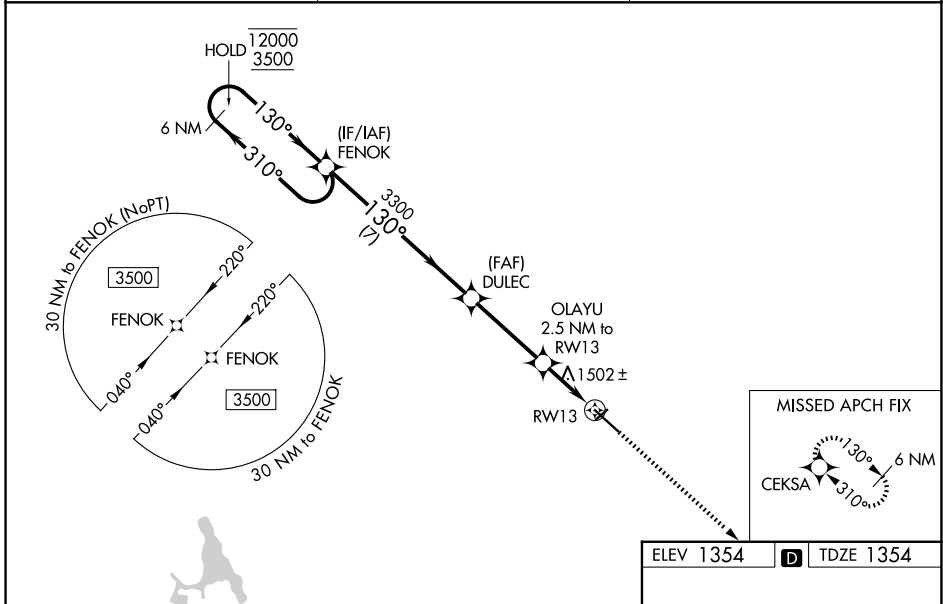
RNP APCH - GPS.

Baro-VNAV and VDP NA when using Eveleth altimeter setting. For uncompensated Baro-VNAV systems, LNAV/VNAV NA below -17°C or above 54°C. When local altimeter setting not received, use Eveleth altimeter setting and increase LPV DA to 1640 feet; increase LNAV/VNAV DA to 1766 feet and all visibilities 1/8 SM. Increase all MDAs 40 feet and LNAV visibility Cat C/D 1/8 SM, and Circling visibility Cat C 1/4 SM. For inop ALS, increase LNAV/VNAV all Cats visibility to 1 SM. For inop ALS when using Eveleth altimeter setting, increase LPV all Cats visibility to 7/8 SM, LNAV/VNAV all Cats to 1 1/8 SM, LNAV Cat C/D to 1 1/8 SM.

MALS R

MISSED APPROACH: Climb to 3500 direct CEKSA and hold.

|                        |                                       |                               |
|------------------------|---------------------------------------|-------------------------------|
| ASOS<br><b>126.425</b> | DULUTH APP CON<br><b>125.45 233.7</b> | UNICOM<br><b>123.0 (CTAF)</b> |
|------------------------|---------------------------------------|-------------------------------|



|                      |          |               |                 |                        |        |
|----------------------|----------|---------------|-----------------|------------------------|--------|
| 6 NM Holding Pattern |          | FENOK         | DULEC           | OLAYU 2.5 NM to RWY 13 | CEKSA  |
| 12000<br>3500        |          | 3300          | 3300            | 1.2 NM to RWY 13       | 130°   |
| GP 3.00°<br>TCH 48   |          | 7 NM          | 3.5 NM          | 1.3 NM                 | 1.2 NM |
| CATEGORY             | A        | B             | C               | D                      |        |
| LPV DA               | 1604-1/2 |               | 250 (300-1/2)   |                        |        |
| LNAV/VNAV DA         | 1730-5/8 |               | 376 (400-5/8)   |                        |        |
| LNAV MDA             | 1800-1/2 | 446 (500-1/2) | 1800-7/8        | 446 (500-7/8)          |        |
| CIRCLING             | 1900-1   | 546 (600-1)   | 1920-1 1/2      | 1980-2                 |        |
|                      |          |               | 566 (600-1 1/2) | 626 (700-2)            |        |

HIRL Rwy 13-31

NC-1, 11 JUN 2026 to 09 JUL 2026

NC-1, 11 JUN 2026 to 09 JUL 2026